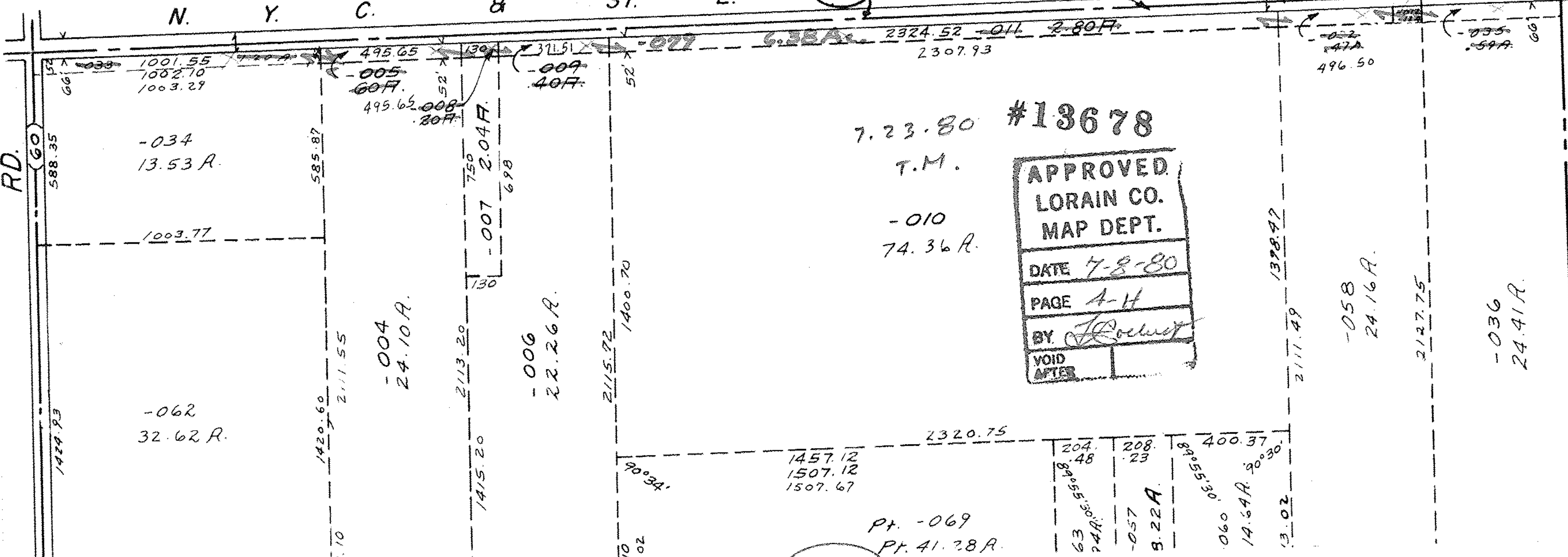


SEE 4-D

500

04-00-029-500-001
7.99F.

R. R.



7.23.80 #13678

T.M.
-010
74.36 R.

APPROVED.
LORAIN CO.
MAP DEPT.

DATE 7-8-80

PAGE 4-H

BY *J. Lockwood*

VOID AFTER

Pt. -069
Pt. 41.28 R.

204.48
208.23
400.37
90°30'

63 24 R. 55.50
-057
9.22 A.
060
14.64 R. 90°30'

-058
24.16 R.

-036
24.41 R.

RD.

60

588.35

1424.93

-034
13.53 R.

1003.77

-062
32.62 R.

585.87

1420.60

Pt. 10

2111.55

-004
24.10 R.

2113.20

1415.20

-007
2.04 F.
698

-006
22.26 R.

2115.72

1400.70

90°34'

10.02

G. J. B. A.

2324.52
2307.93

496.50

2127.75

1398.97

2111.49

496.50

24.41 R.

66