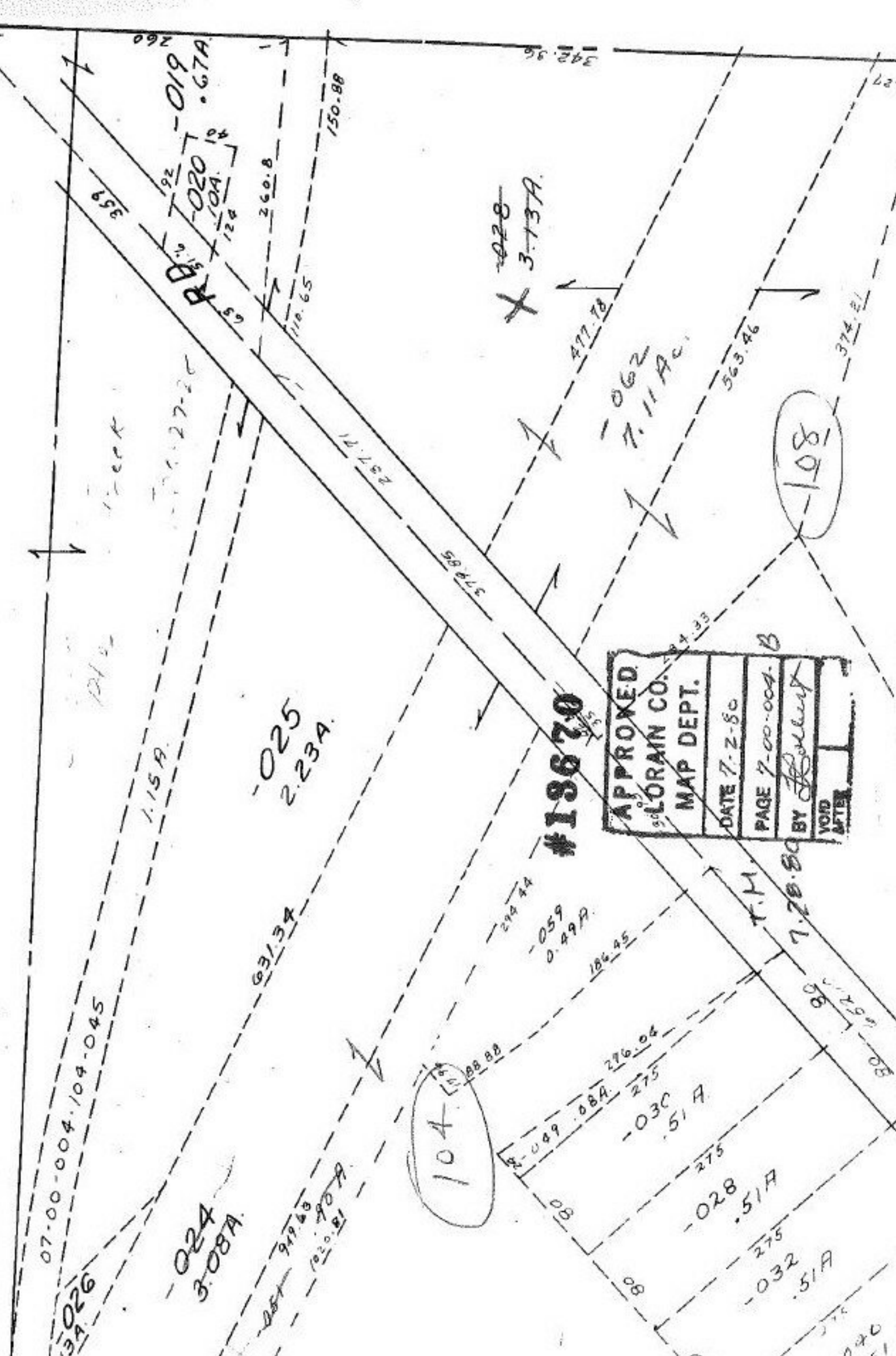


SEE 7-00-005-D



#13670

APPROVED
LORAIN CO.
MAP DEPT.
DATE 7-2-80
PAGE 7-00-004-B
BY <i>H. Holbert</i>
VOID AFTER

108

104

~~028~~
3-13A

062
7.11 Ac.

025
2.23A

024
3.08A

026
3.72A

07-00-004-104-045

1.15A

124 27-20

3.59

019
0.67A

631.34

260.8

110.65

150.88

237.71

379.85

214.44

059
0.49A

186.45

477.70

276.04

030
.51A

028
.51A

032
.51A

7.28.80

T.M.

30

040
.51A

374.21

563.46

342.96

427