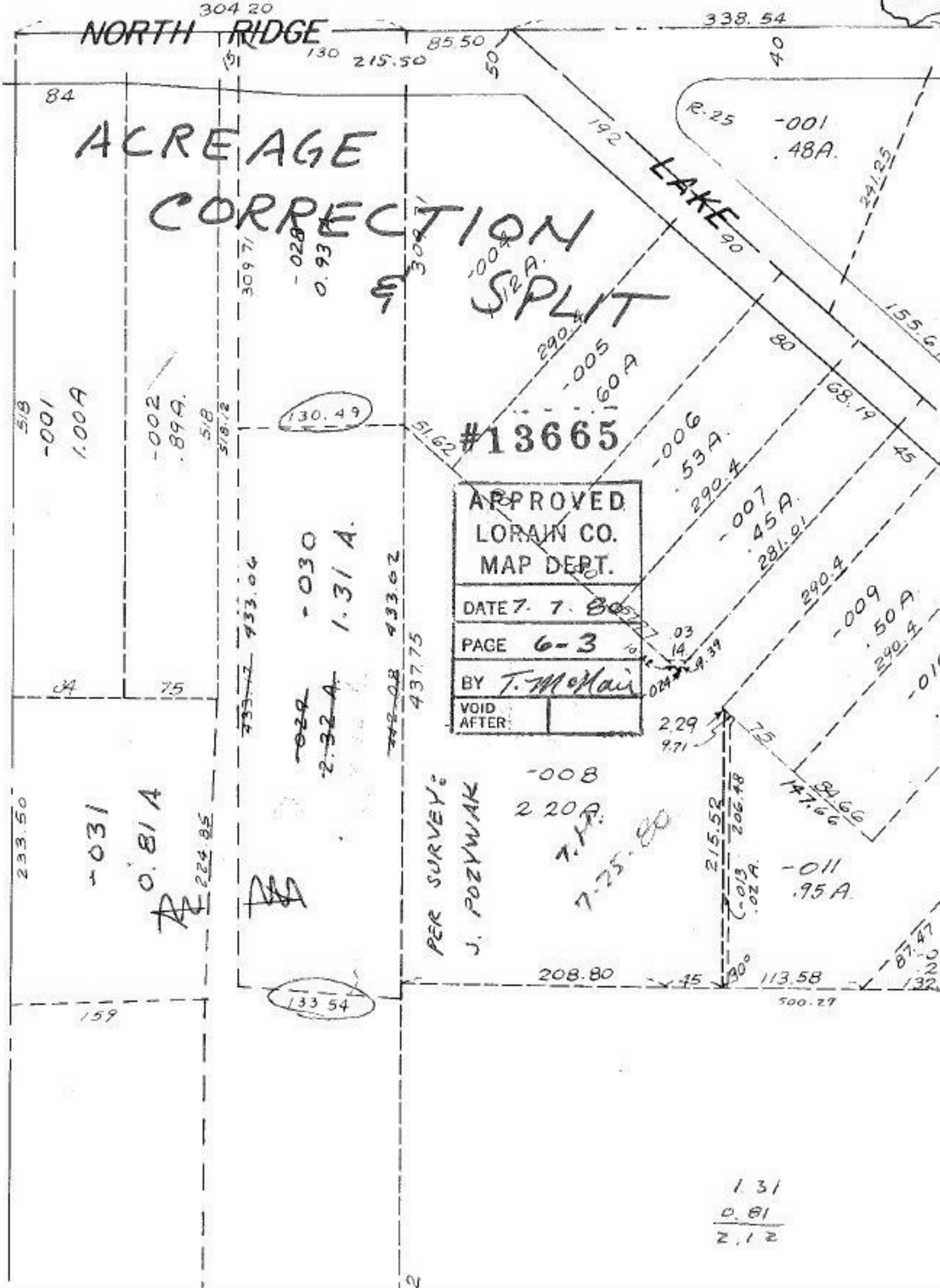


#13665

SEE 3-00-112-A

254



ACREAGE  
CORRECTION  
SPLIT

#13665

APPROVED  
LORAIN CO.  
MAP DEPT.

DATE 7-7-80

PAGE 6-3

BY T. McMain

VOID  
AFTER:

PER SURVEY:  
J. POZYWIAK  
7-25-80

1.31  
0.81  
2.12