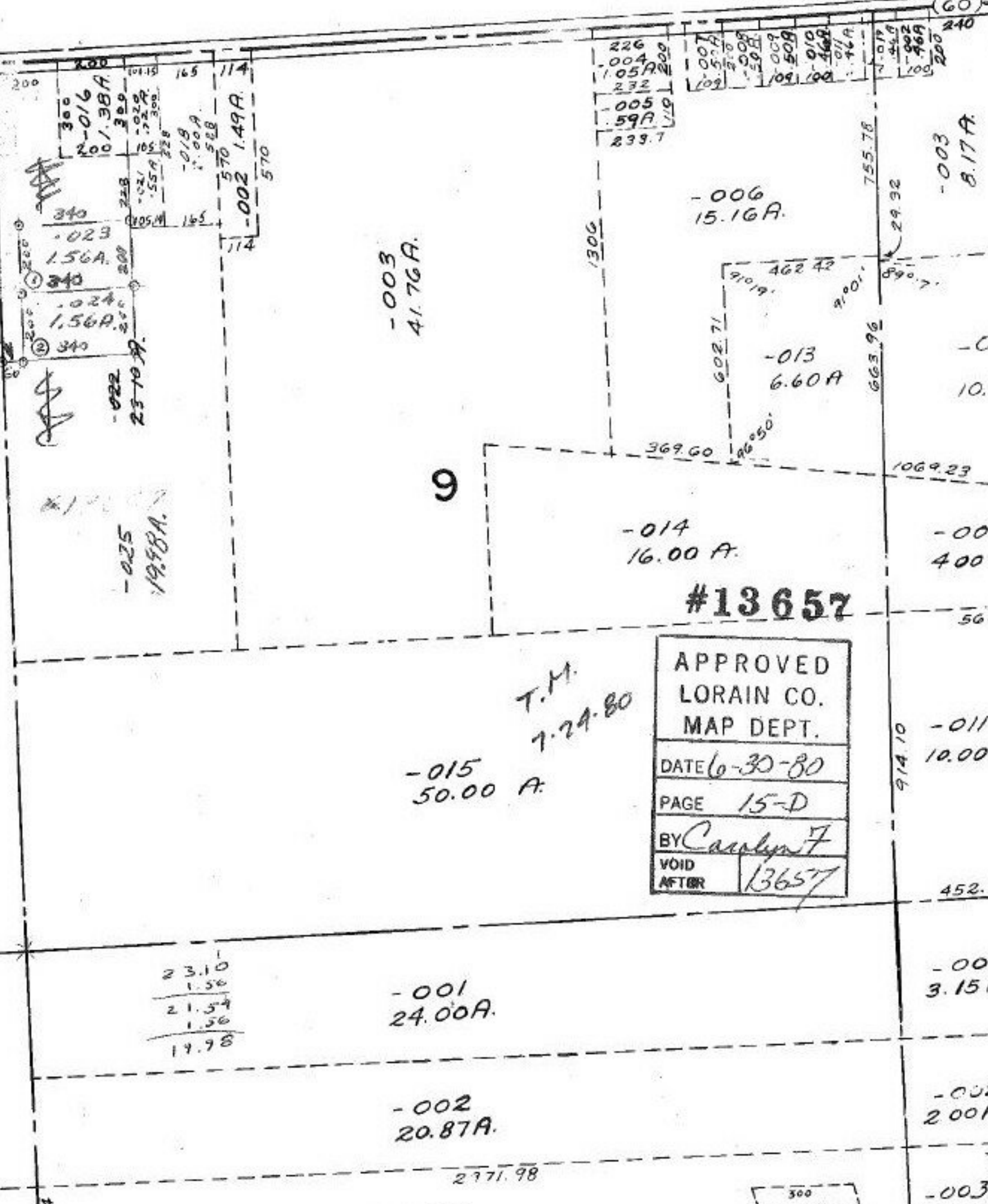


#13657

THIS LINE IS FOR REFERENCE ONLY



-003
41.76A.

-006
15.16A.

-013
6.60A

-014
16.00A.

-015
50.00 A.

-001
24.00A.

-002
20.87A.

-008

-003
8.17A.

-01.
10.9

-006
400A.

-011
10.00A.

-001
3.15A.

-002
2.00A.

-003
2.00A.

#13657

T.M.
7-24-80

APPROVED	
LORAIN CO.	
MAP DEPT.	
DATE	6-30-80
PAGE	15-D
BY	Carolyn F
VOID AFTER	13657

23.10
 1.56
 21.54
 1.56
 19.98

300
 -007
 1.22A

44