

#13654

#13654

APPROVED	
LORAIN CO.	
MAP DEPT.	
DATE 7-22-80	
PAGE 9-C	
BY T. McRae	
VOID	
AFTER	

-014
40.08 A.

T.M.
7-21-80

-013
33.91 A.

2733.52
6

-009
33.97 A.

-012
5.02 A.

ROUTE 1
-011
1.63 A.

-002
204 A.

-008
1.25 A.

-018
2757.26 6.86 A.

710.50
~~816~~ + 79 A
 710.5
 -006
 3.00 A.
 710.5

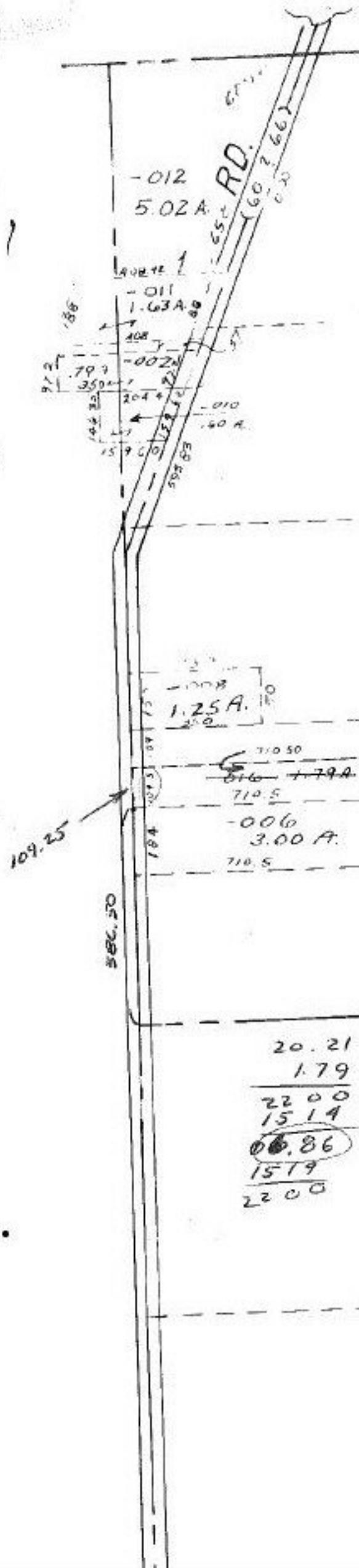
~~-015~~ -017
~~20.21 A.~~ 15.14 A.
2042.66

-007
25.00 A.

20.21
 1.79
 22.00
 15.14
 6.86
 15.19
 22.00

-001
50.00 A.

16 -002
67.00 A.



25
293.87