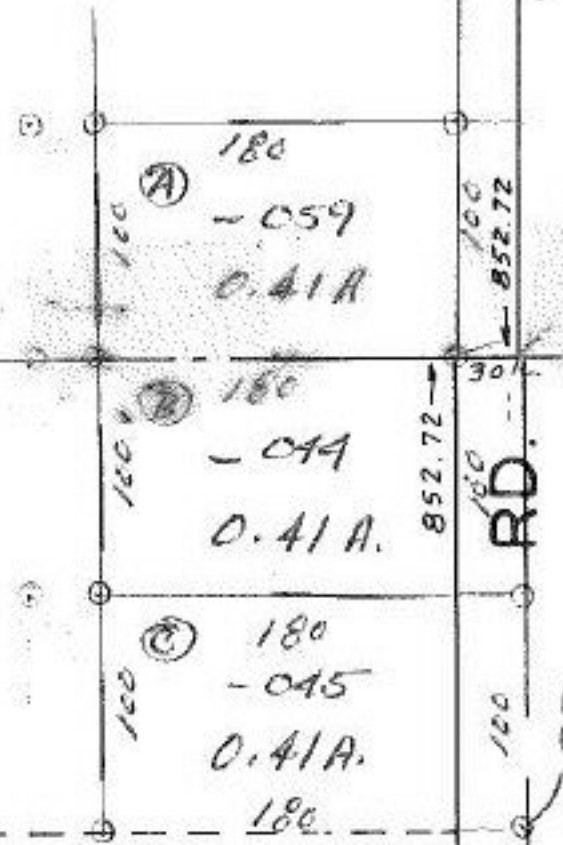


Pt. 058 - 060
Pt. 39.63A 39.22A

#13645

982.72
1182.72 → E S FCR
ABBE

-045 -046
7.01A 6.19A

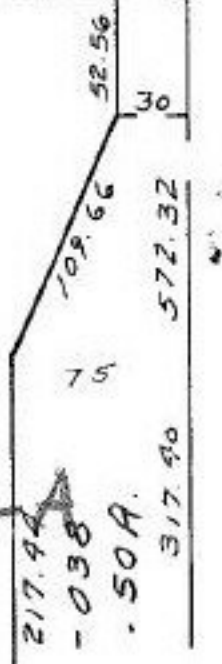


F.M.
7.3.80

#13645

APPROVED	
LORAIN CO.	
MAP DEPT.	
DATE	6-19-80
PAGE	3-00-01A-B
	3-00-015-B+
BY	Car... ..
VOID AFTER	13645

-042
8.50A



0
41
19