

#13629

1260.29
240.73
933.06
Pt. 031
Pt. 90A

-034
0.60A
412.28

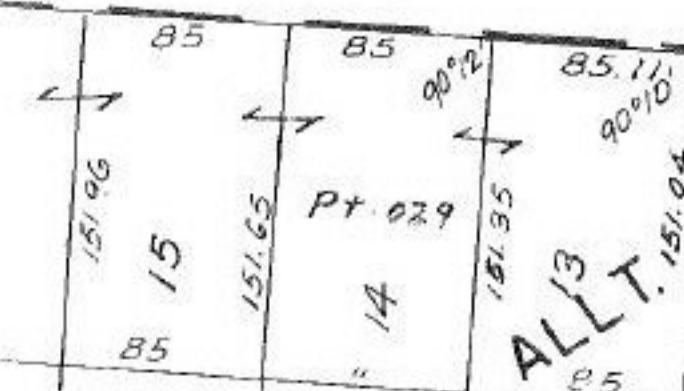
-035
0.54A
225.51

Pt. -030
Pt. 2.10A

10
90

INTERSTATE

ALLT. 151.04



IDLEWOOD

DR.

LEXSA

2

102

102

Pt. -019
Pt. 1.77A

Pt. -050
Pt. 3.13A

101

DETAIL OF CENTER LINE

SEE 6-42

APPROVED.
LORAIN CO.
MAP DEPT.
DATE 6-10-80
PAGE 6-25
BY <i>Carlin</i>
VOID AFTER 13629

T.M.
7.25.80

3629

11