

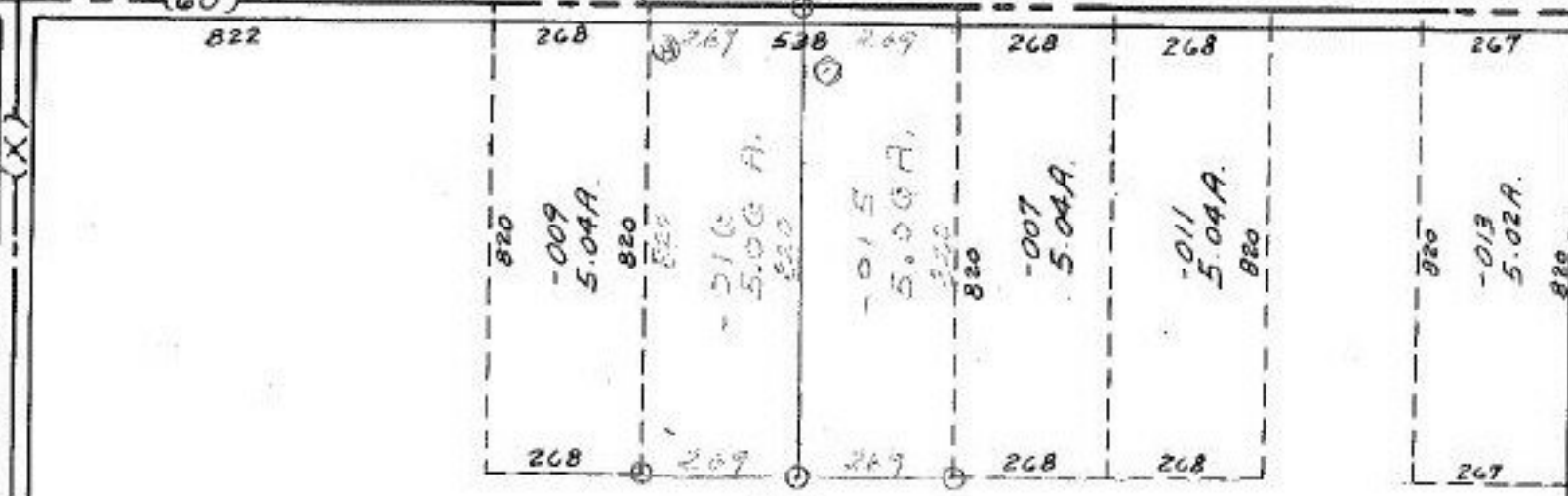
#13609

1359  
WEBSTER

1090

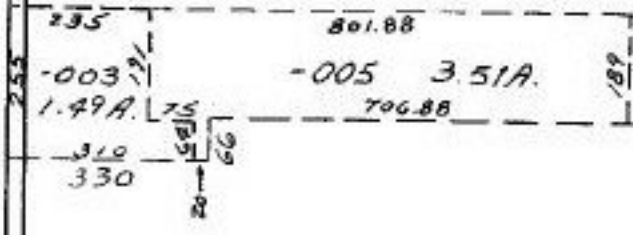
(60)

RD. (X)



-017 -014  
56.24A 66.36A

13609



-002  
23.50A

T

C

-001  
56.00A

R

112

A

#13609

MAR 23 1981

APPROVED	
BORAIN CO.	
MAP DEPT.	
DATE	5-27-80
PAGE	19-B
BY	Carlynn
VOID AFTER	13609

-002  
10.00A

PECK - WADSWORTH

(60)

1280

300

30.