

957.00
-018
6.04 #13568

956.30
-002
6.00A

234.28
-001
9.58A
1688.02

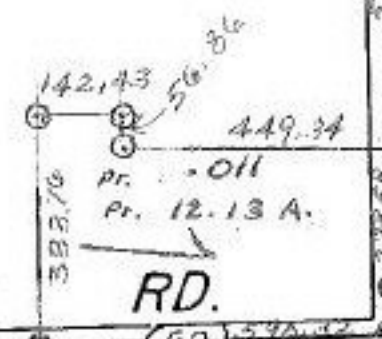
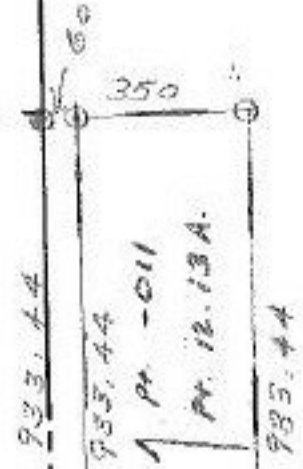
ACREAGE OF REMAINDER
WAS CORRECTED PER
SURVEY:
G.E. PENFOUND
5-8-80

-003
50.57A. DUP
50.75A Map
#13568

APPROVED
LORAIN CO. MAP DEPT.
DATE 5-8-80
PLAT 15-E
BY T. McNeil
VOID AFTER

T.M.
6-5-80

-009
~~93.75A~~
-010
83.91A.



93.75
83.91
9.84

12.13
9.84
2.29

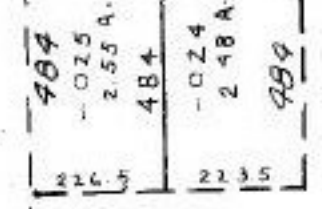
-008
45.72A.

763
750
1213

1643.10

445.36 450 1222.87 713.05 83.05

-005
14.00A.



-011
12.63A.

-003
5.00A. 594

5.03

1.82A.

COA.