

Pt. 06-23-006-000
-012
#13512 Pt. 3 15A.

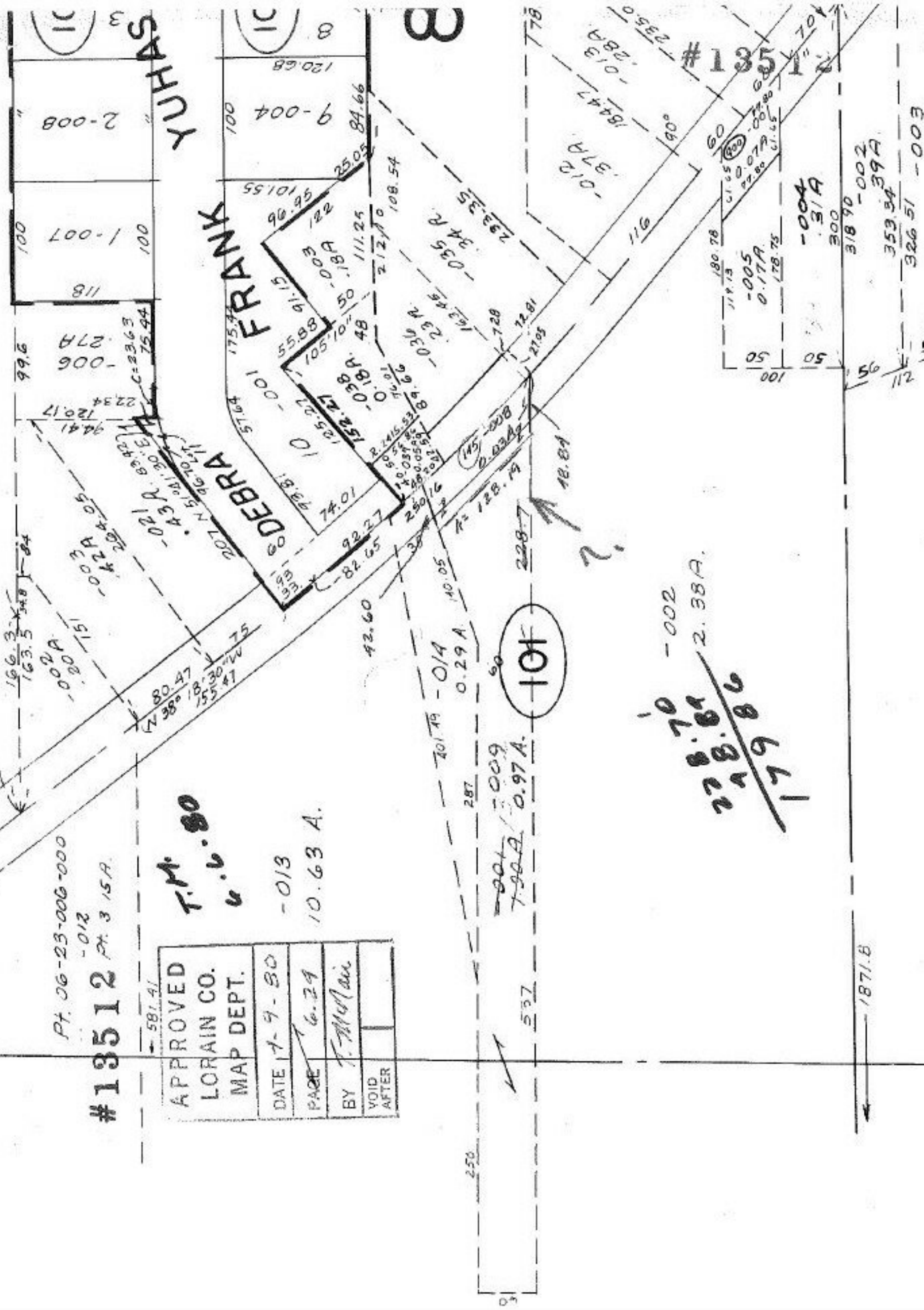
APPROVED	
LORAIN CO.	
MAP DEPT.	
DATE	7-9-80
PAGE	6-29
BY	T. McMain
VOID AFTER	

T.M. 80
v.v. 80
-013
10.63 A.

-002
228.70
228.81
179.86

101

001-009
7-90A-0.97A.



1871.B

1592E
1593E
1594E
1595E
1596E
1597E
1598E
1599E
1600E