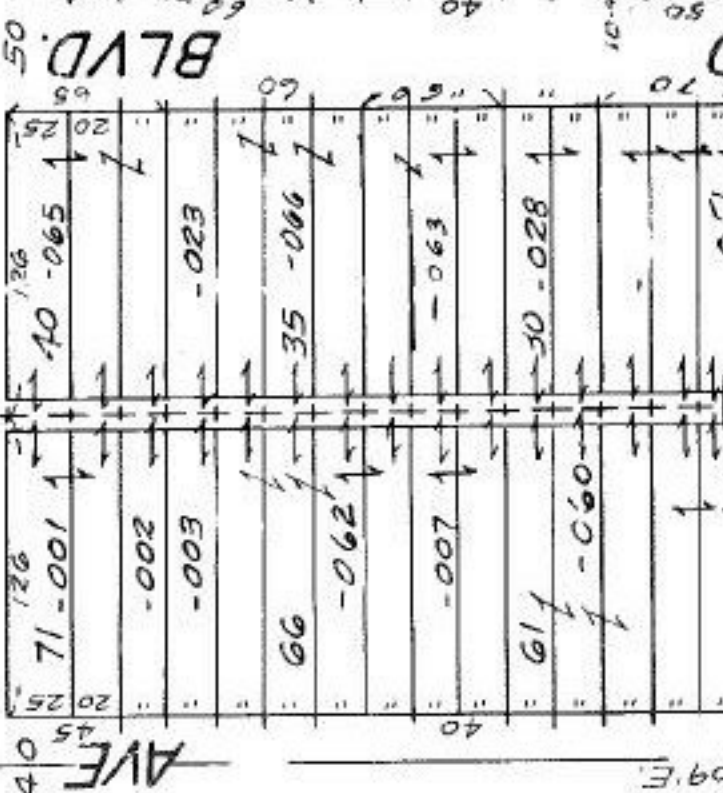
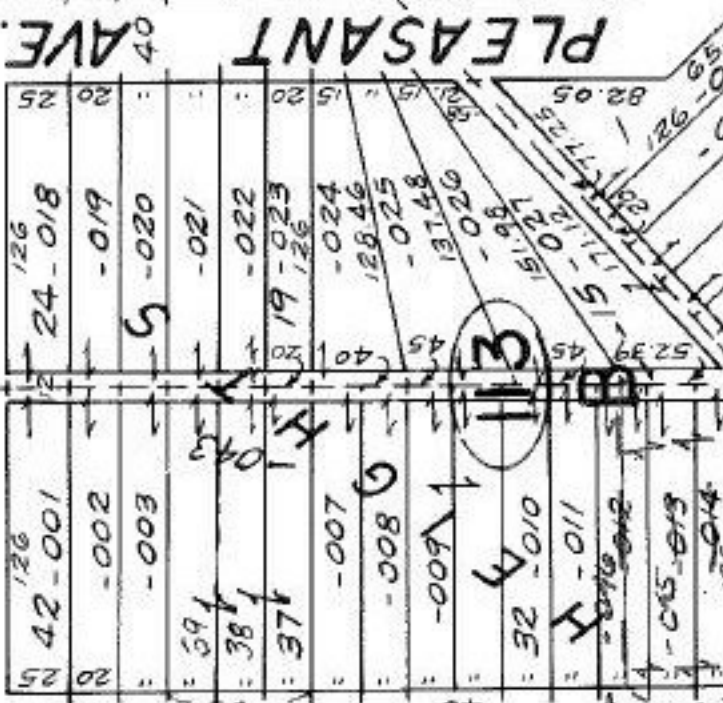
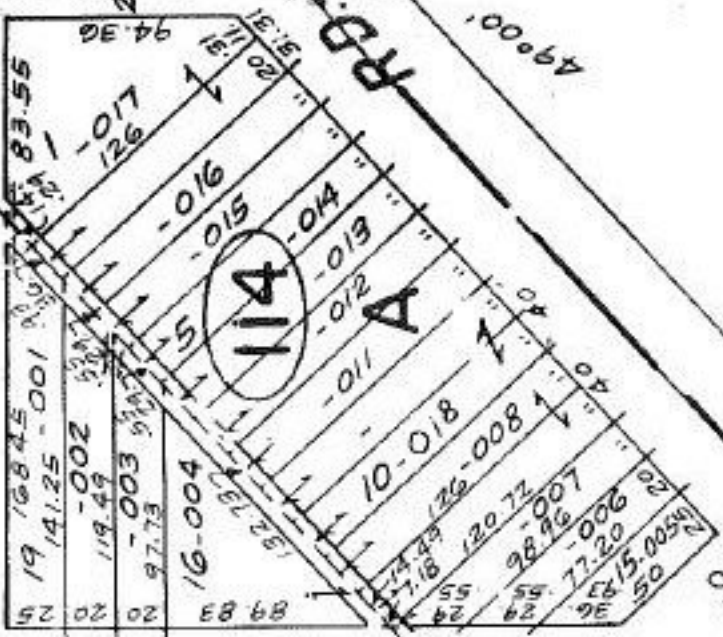


#18477

-058
18.82A.

SEE 7-00-000-B

ST.



#18477 T.M.
5.29.80

APPROVED
LORAIN CO.
MAP DEPT.
DATE 3-19-80
PAGE 7-00-00B-D
BY T. McMillan
VOID AFTER

S. 88° 51' E.

ELYRIA

BLVD.

BROAD

PLEASANT AVE.

MCKINLEY



MAIN

M. 81° 32' N

N. 1° 09' E.