

#18415

#18415

APPROVED
LORAIN CO.
MAP DEPT.

DATE 2-19-80

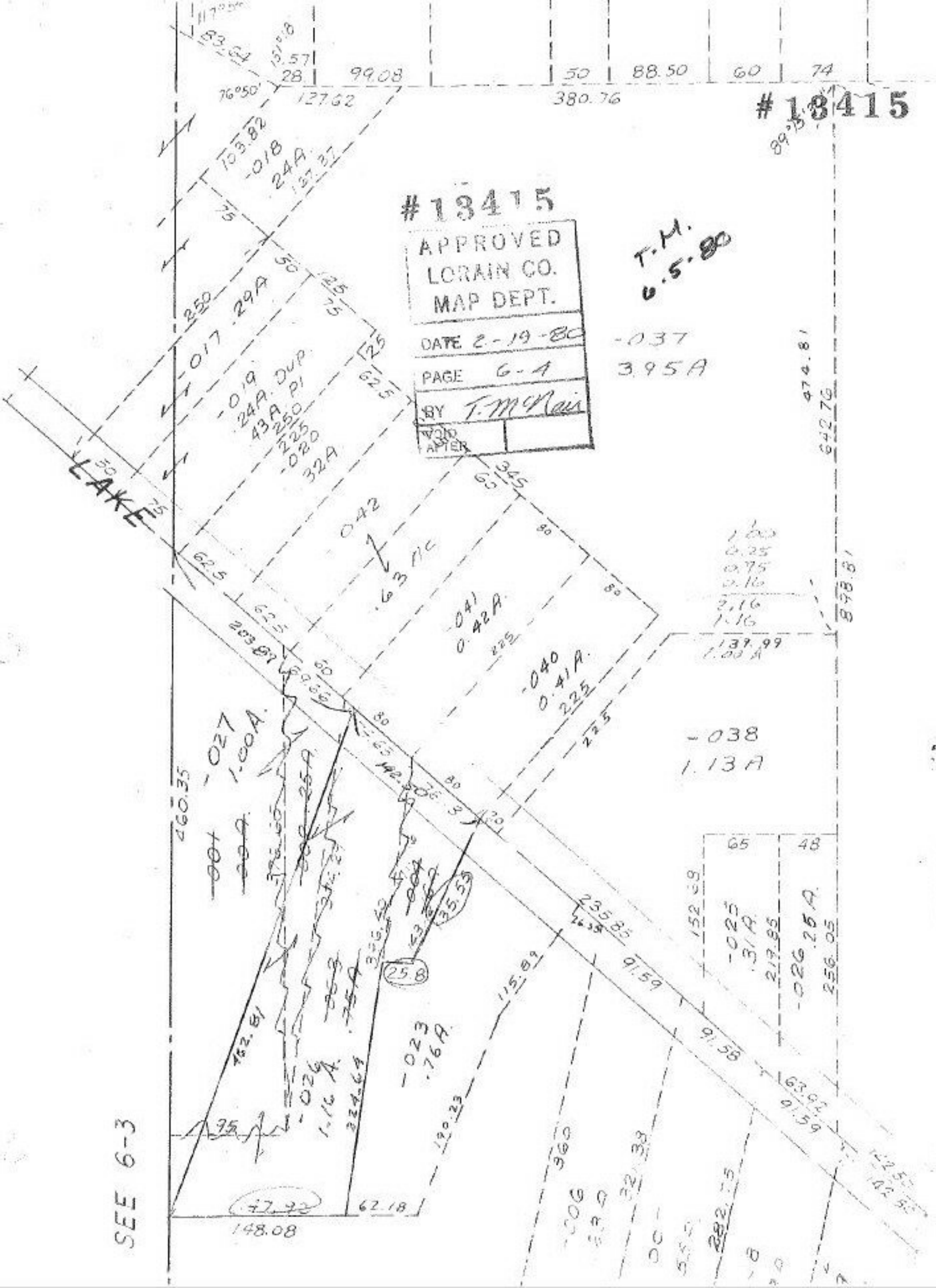
PAGE 6-4

BY T.M. Nair

VOID
AFTER

T.M.
6-5-80

-037
3.95A



SEE 6-3

1.00
0.25
0.75
0.16
2.16
1.16
137.99
1.00 A

-038
1.13A

65 48
-025
.31A
219.95
-026 .25A
256.05

460.35
-007
-027
1.00A
762.81
-026
1.16A
324.64
-023
.76A
120.23
115.89
125.8
356.40
32.38
35.53
32.38
152.69
235.85
91.59
91.58
63.92
91.59
148.08
62.18
142.55
102.85

474.81
642.76
878.81

52532