

290 90

225.56

13413

-06
6.00R.

965

-07
5.00A

265

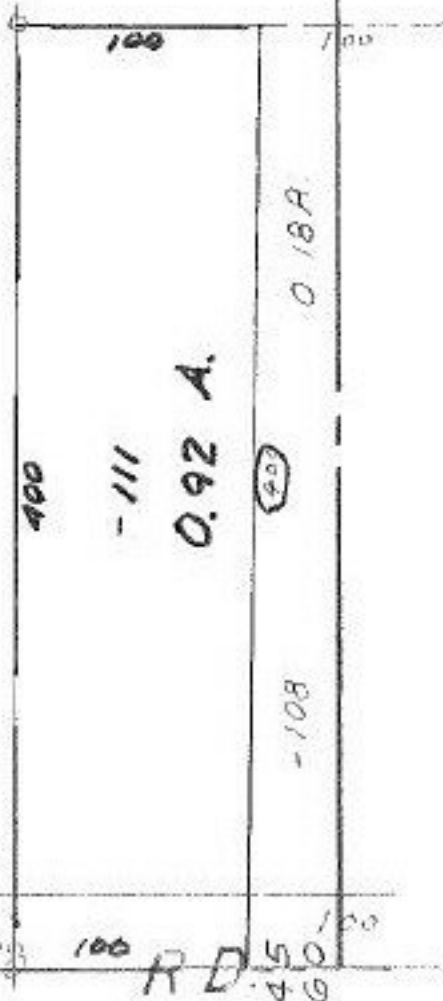
-112
3.01 A.

3.93
0.92
3.01

13413

T.M.
5.22.80

APPROVED LORAIN CO. MAP DEPT.
DATE 2-19-80
PAGE 4-00-012-H
BY T.M. Mail
VOID AFTER



MARKS

225.56

100

100

RD. 45
9

100

290 90