

RY

WESTEAD

10-003

9-004

8-005

7-006

6-007

5-008

4-009

3-010

2-011

1-012

0-013

0-021

0-022

484.20

N 88° 50' W

424

301.98

1173/879

103

173.80

173.81

301.22

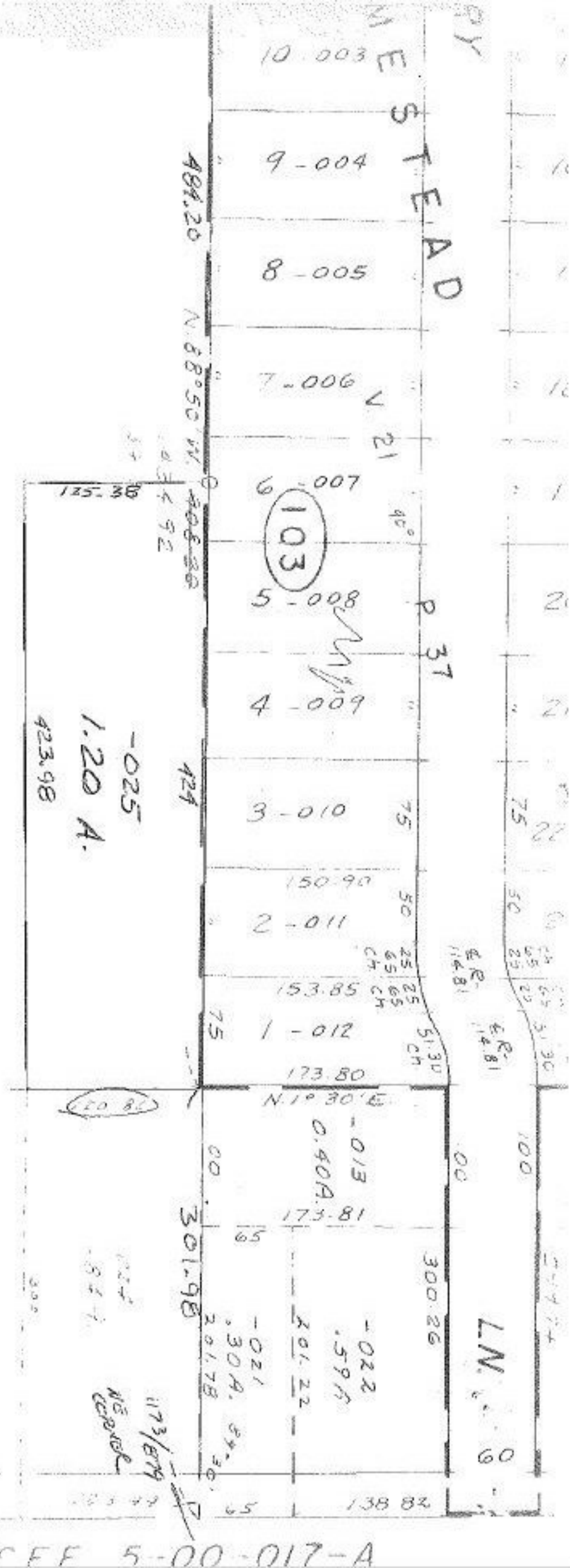
301.78

28.81

P 37

300.26

LN 9



-026
35.00 A.

#13384

T.M.
5.27.80

APPROVED
LORAIN CO.
MAP DEPT.

DATE 2-1-80

PAGE 5-00-004-B

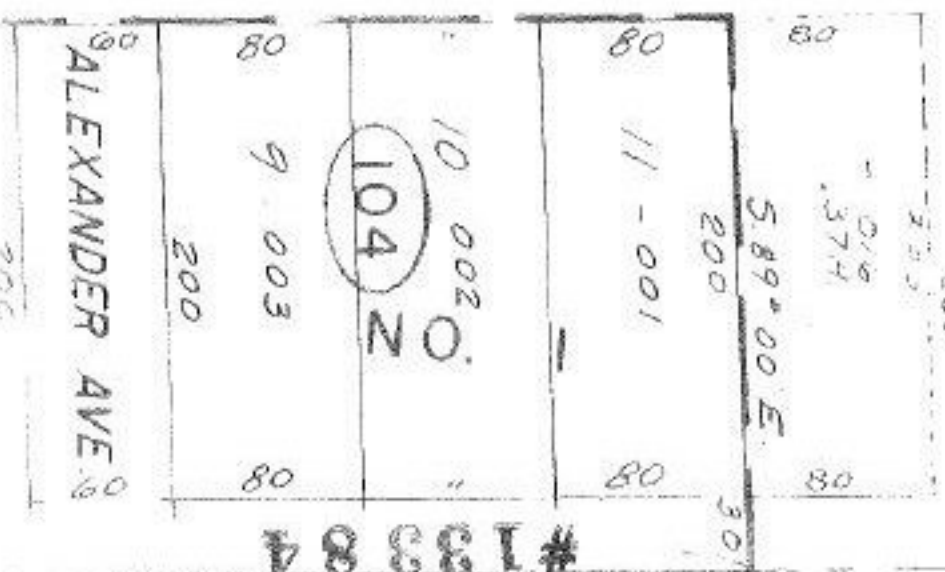
BY T. McNeil

VOID AFTER #13384

36.20
1.20
35.00

908.20
424
484.20

103



#13384

CEE 5-00-017-A