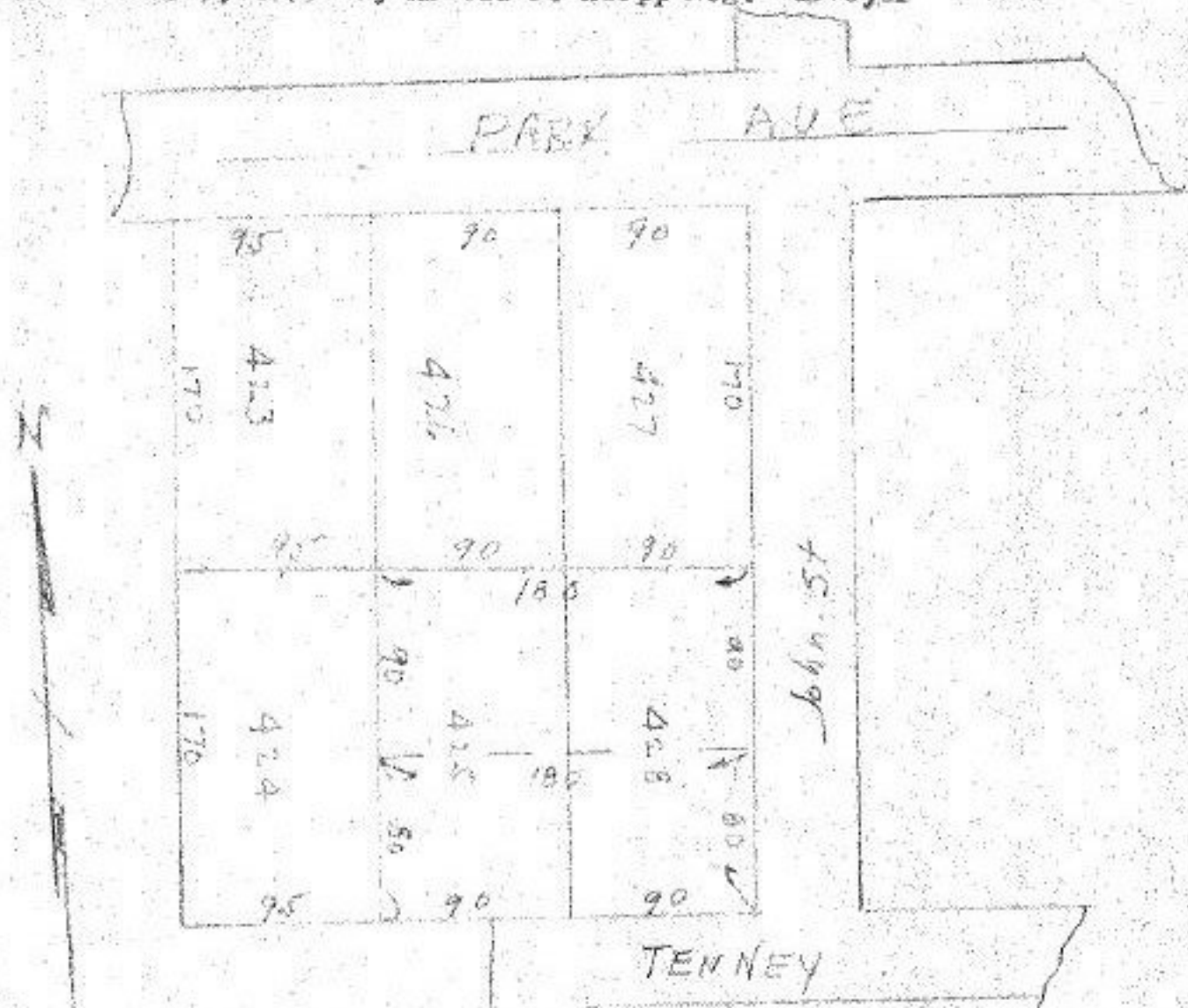


Map of Part of Huffeds Addition Vol. 2 Page 14 Lorain Co. Plats  
City of Amherst, County of Lorain

Scale 1" = 100' Oct. 9, 1979 By Arnold F. Koepf Reg. Surveyor



#13365

APPROVED LORAIN CO. MAP DEPT.	
DATE 1-29-80	
PAGE 5-0-037-A	
BY T. McMillan	
VOID AFTER	

