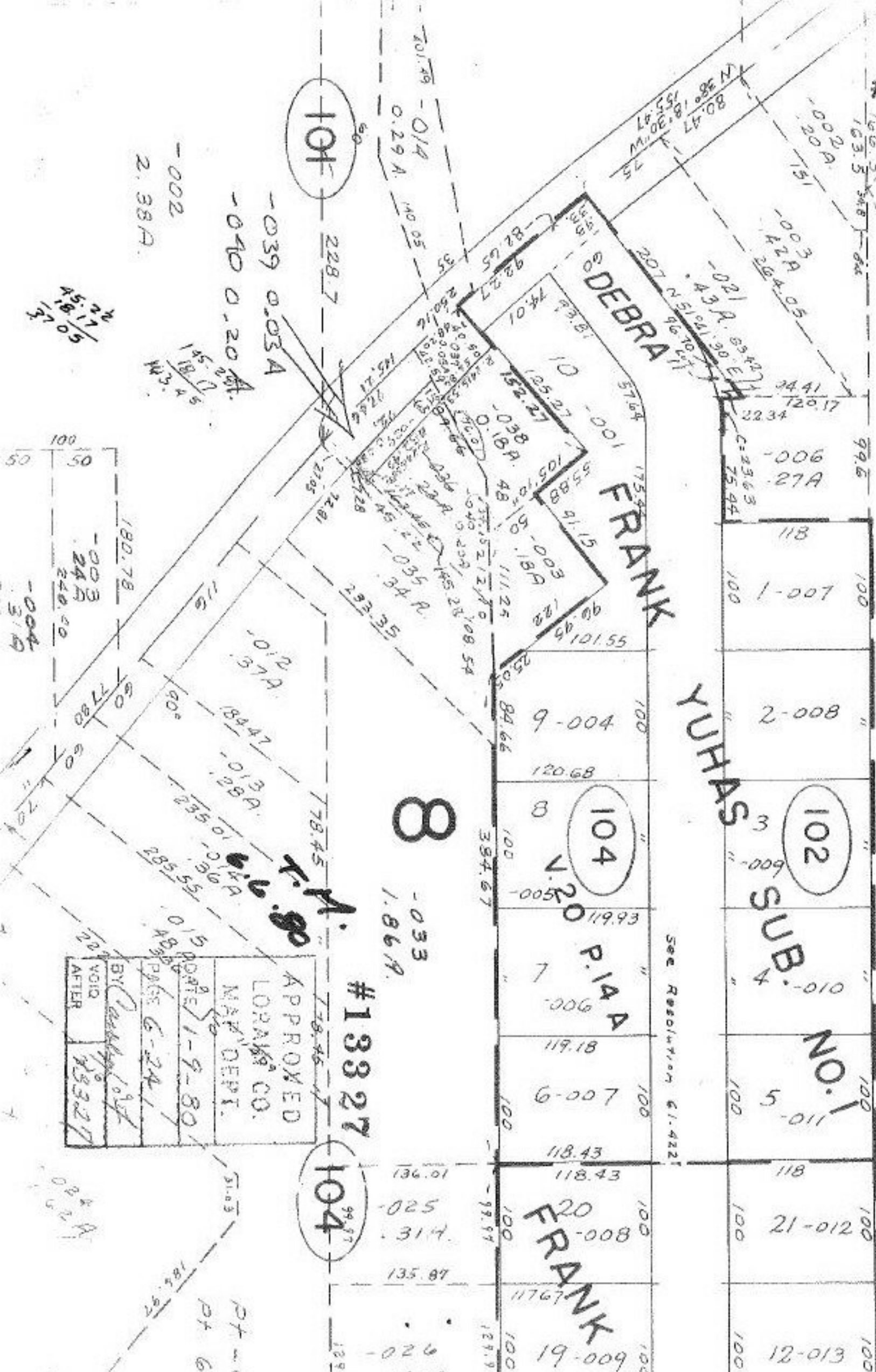


#13327

102 Pt. -001 Pt. 10.82A.



APPROVED	
LORRAINE CO.	
MAP DEPT.	
DATE 1-9-80	
BY [Signature]	
VOID AFTER 1-9-80	

#13327

104

FRANK

YUHAS

NO. 1

8

PIAA

1970.10

See Resolution 61.422

0.002
2.38A

0.039
0.03A
0.040
0.20A

2.11/5
1.51/5
1.11/5

180.78
24A
240.00
3.1A

1.51/5
1.11/5
1.11/5

Pt. 6.

N 85