

-030  
11.90 Ac.

5.20.80  
P.M.

#18809

APPROVED.  
LORAIN CO.  
MAP DEPT.

---

DATE 1-11-80

---

PAGE 2-02-018B

---

BY *[Signature]*

---

VOID  
AFTER

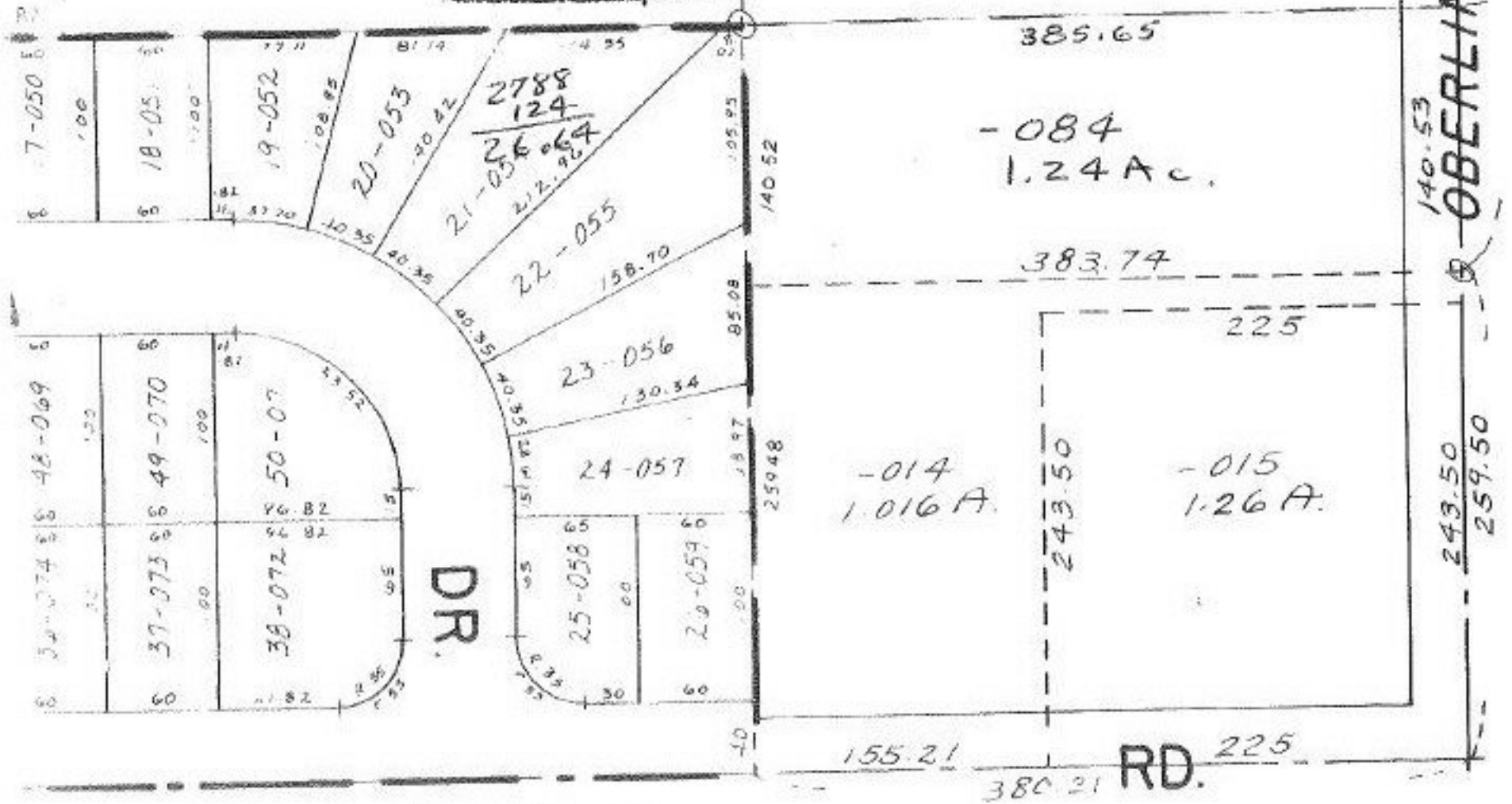
-031  
27.88 A.

-085  
26.64 Ac.

-084  
1.24 Ac.

-014  
1.016 A.

-015  
1.26 A.



SEE 2-02-013-B