

89°05'

-089
2.44 A.

973.67

SEE 11-A

708.79

11-00-089-A

11-00-089-B

NOTE: MOST DIMENSIONS
ARE NOT TO SCALE,
SEE SURVEY

KLEINOPER-SCHMIDT & ASSOC.
2-12-80

#13295

T.M.
6-9-80

APPROVED LORAIN CO. MAP DEPT.
DATE 2-12-80
PAGE 11-00-089-B
BY T.M. Nau
VOID AFTER

-090
27.35 A.

[Handwritten signature]

1637.92

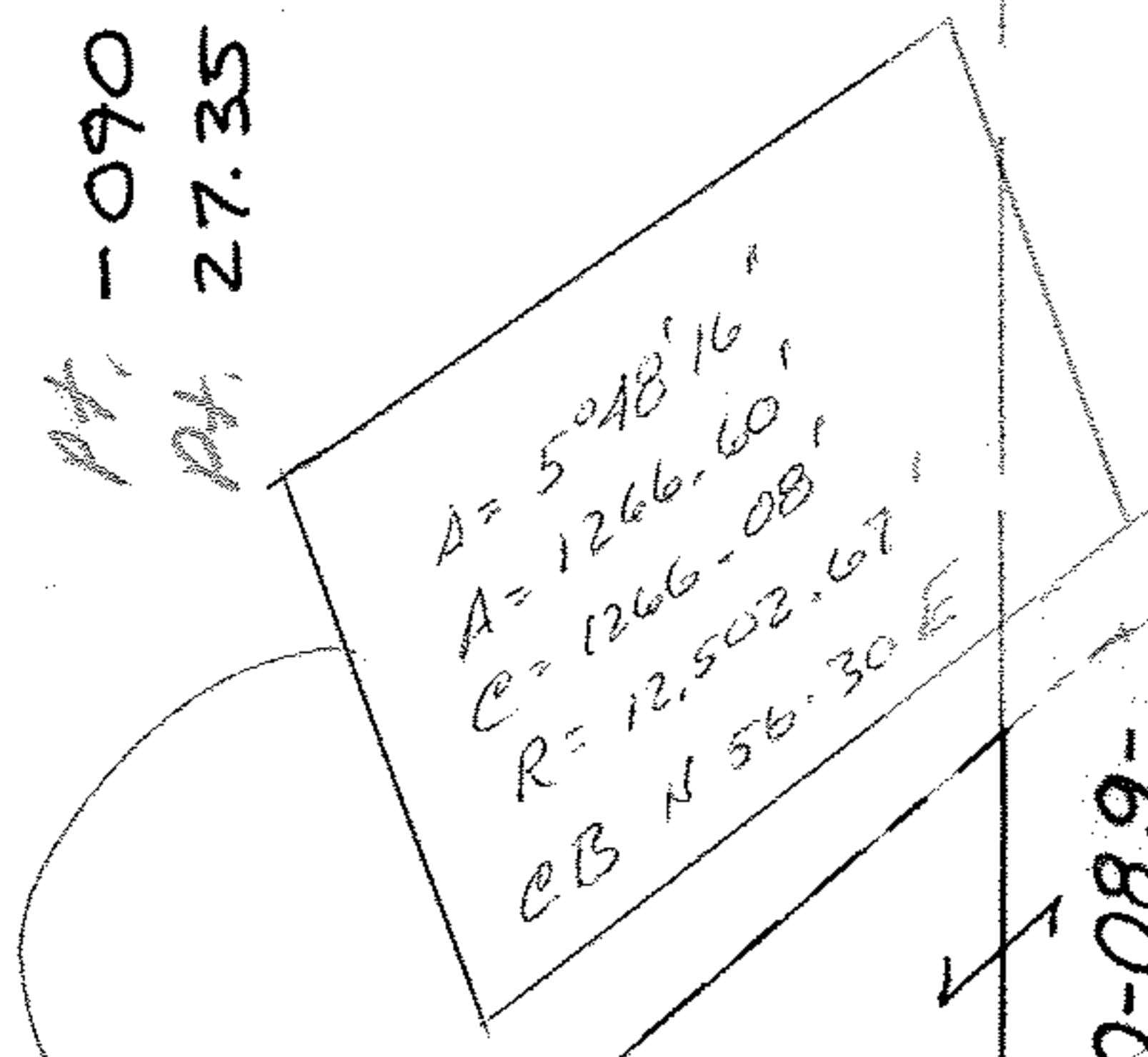
~~PT. 085~~
~~PT. 29.79A.~~

~~PT. -090~~
~~PT. 27.35 A~~

~~PT. 085~~
~~PT. 29.79A.~~

#13295

APPROVED LORAIN CO. MAP DEPT.
DATE 2-12-80
PAGE 11-00-089-A
BY T.M. Nau
VOID AFTER



PT -070
PT 2.75

404.45

52.31

153.95

338.22

N. LINE DURKEE ACCESS RD.

NOTE: THIS IS ACTUAL CHORD

PT. 2.75 R.
PT. 919.95

27.35
2.44
29.79

PT. -069
PT. 7.19 R.

SEE 11-00-089-

1837.40