

6.02 A.

LORAIN COUNTY MAP DEPT.

P. P. No.

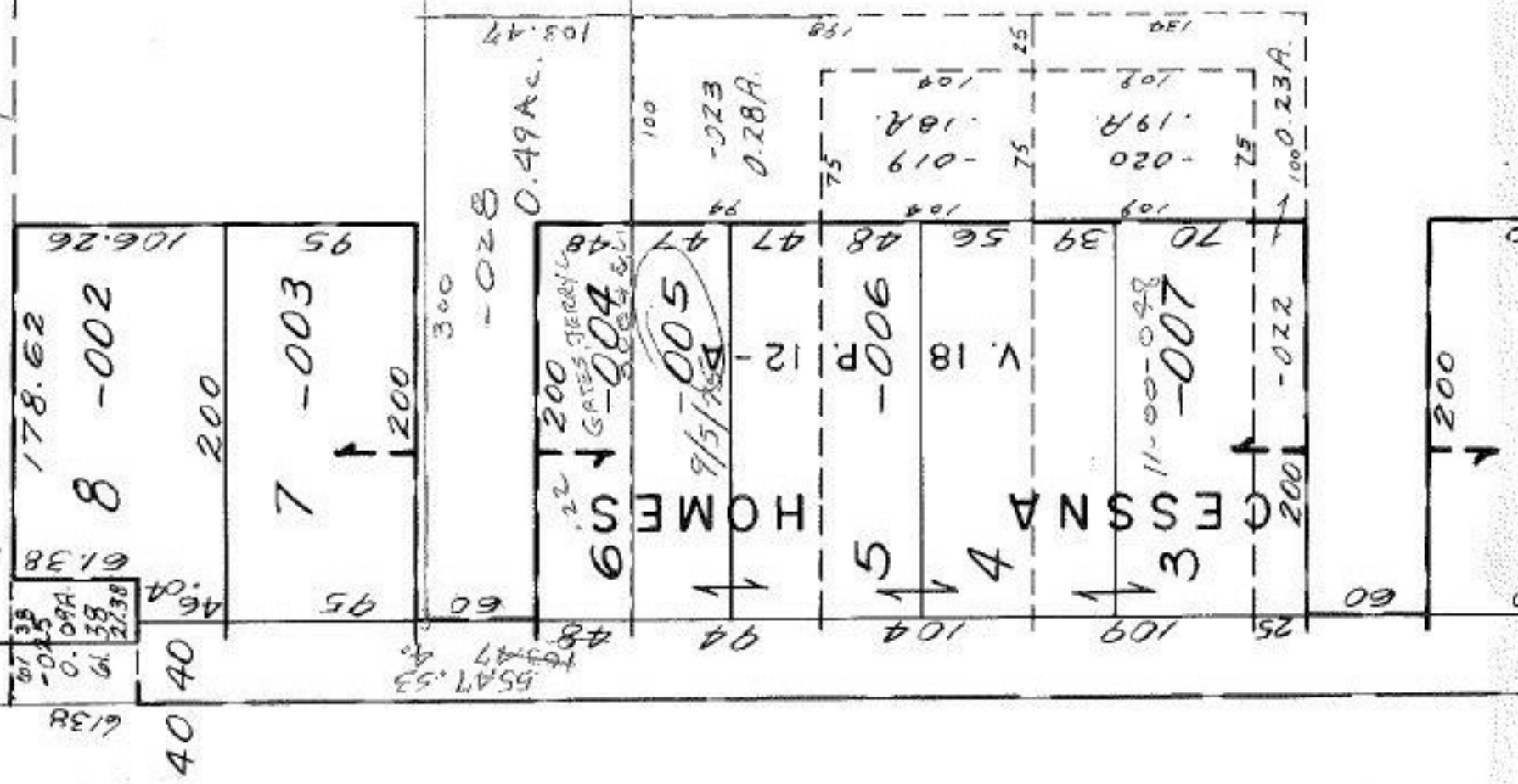
N 89° 25' W 1393

24.33  
49  
23.84

103.47  
108  
103.47

103.47  
48  
55.47  
71.22  
49

26138



-029 -024  
23.84 Ac 24.33 A.

FEB 1 1980

#13291

APPROVED
LORAIN CO.
MAP DEPT.
DATE 12-17-79
PAGE 11-00-048 A
BY <i>[Signature]</i>
VOID AFTER