

114.72

1163.15

-135
3.08 AC.

1168.51

87009.

115.08

~~031~~
~~8.61A.~~

-136
5.53 AC.

13289

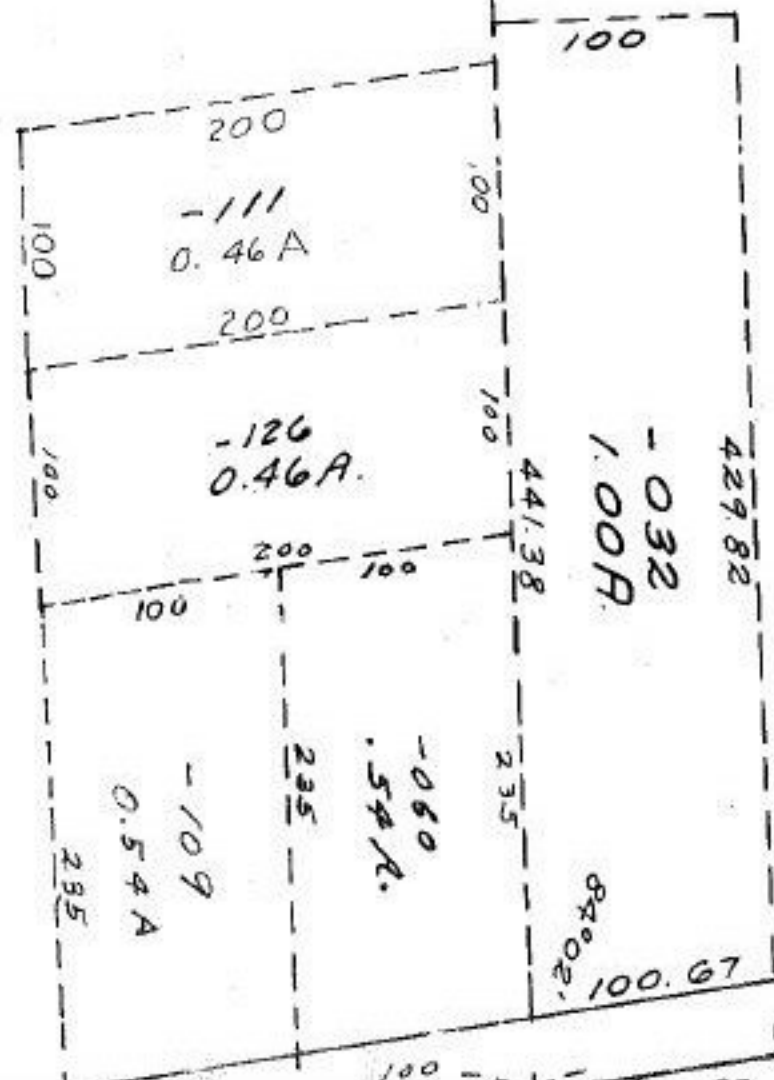
8.61
3.08
5.53

750.28

#13289

FEB 1 1980

APPROVED
LORAIN CO.
MAP DEPT.
DATE 12-17-79
PAGE 10-00-014D
BY <i>[Signature]</i>
VOID AFTER



213.18
53.31
39.53