

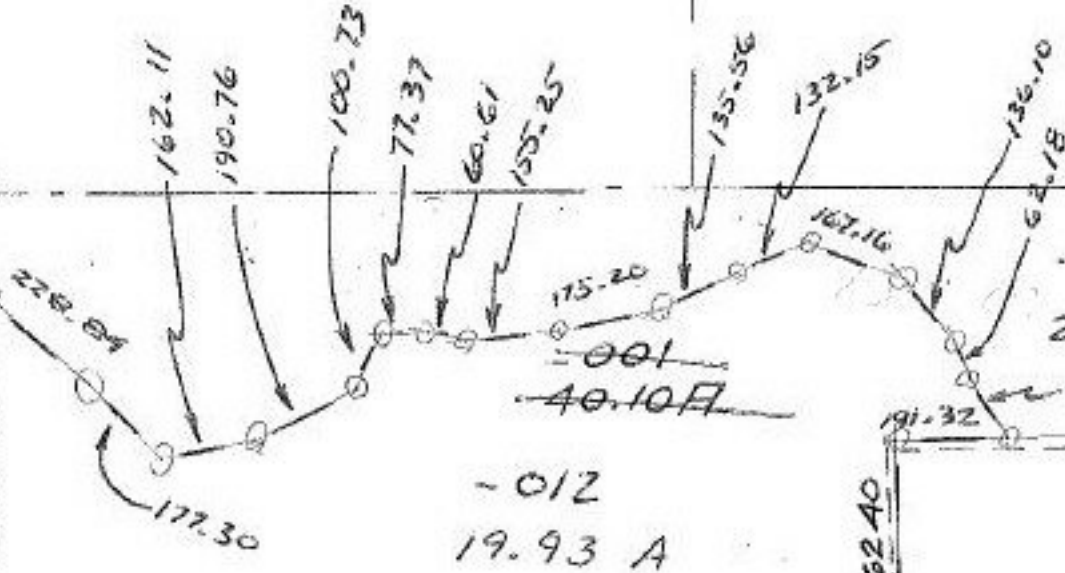
SEE

SEE #13278

RD.

41-14

678.02



-013  
20.17 A.

-012  
19.93 A

254.16  
360.03  
1540  
1285.95  
1540  
1297.25

362.40

88°44'

40.10  
19.93  
20.17  
19.93  
40.10  
-004  
47.50 F.0

SEE 2-02-001-B

SEE

1979.6  
191.32  
788.28

2019.15

-011  
16.67A.

Comm. Res. 79-845

2016.2

Amherst City

#13278 2

APPROVED	
LORAIN CO.	
MAP DEPT.	
DATE 12-10-79	
PAGE 2-F	
BY T. McHair	
VOID	
AFTER	

FEB 1980  
2016.2

254

400  
-007  
100  
-92F.

RD.

F. TER PARK

TS 1, 2, 9, 10, 11, 12, 19, 20, 21

TS 1 5 6