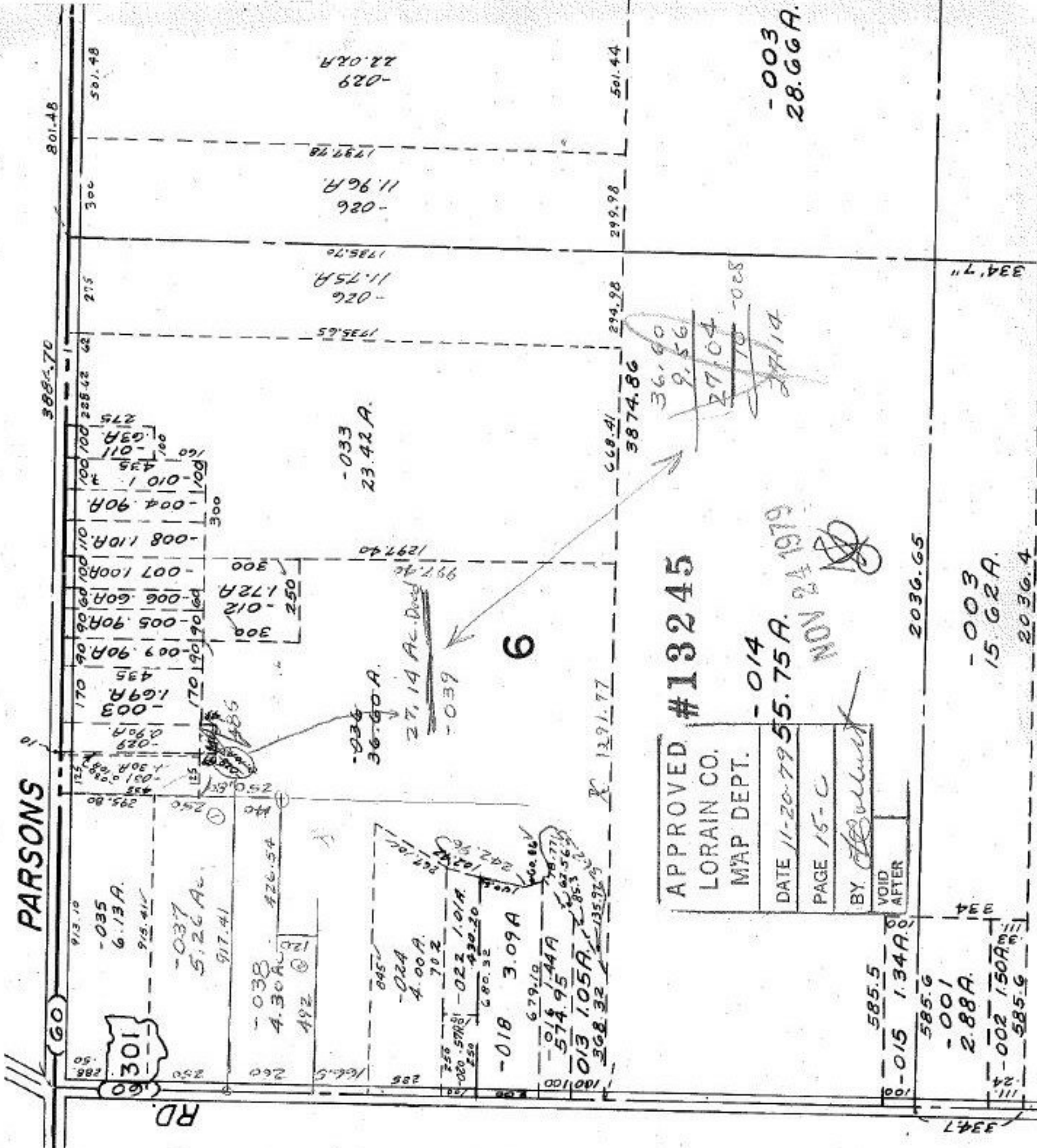


PARSONS



APPROVED #13245

LORAIN CO. MAP DEPT.

DATE 11-20-79

PAGE 15-C

BY [Signature]

VOID AFTER

NOV 24 1979

2036.65

334'7"

334'7"

334'7"

-014
55.75 A.

-015
1.34 A.

-001
2.88 A.

-002
1.50 A.

-003
15.62 A.

3874.86

36.60
9.56
27.04

-003
28.66 A.

334'7"

334'7"

334'7"

334'7"