

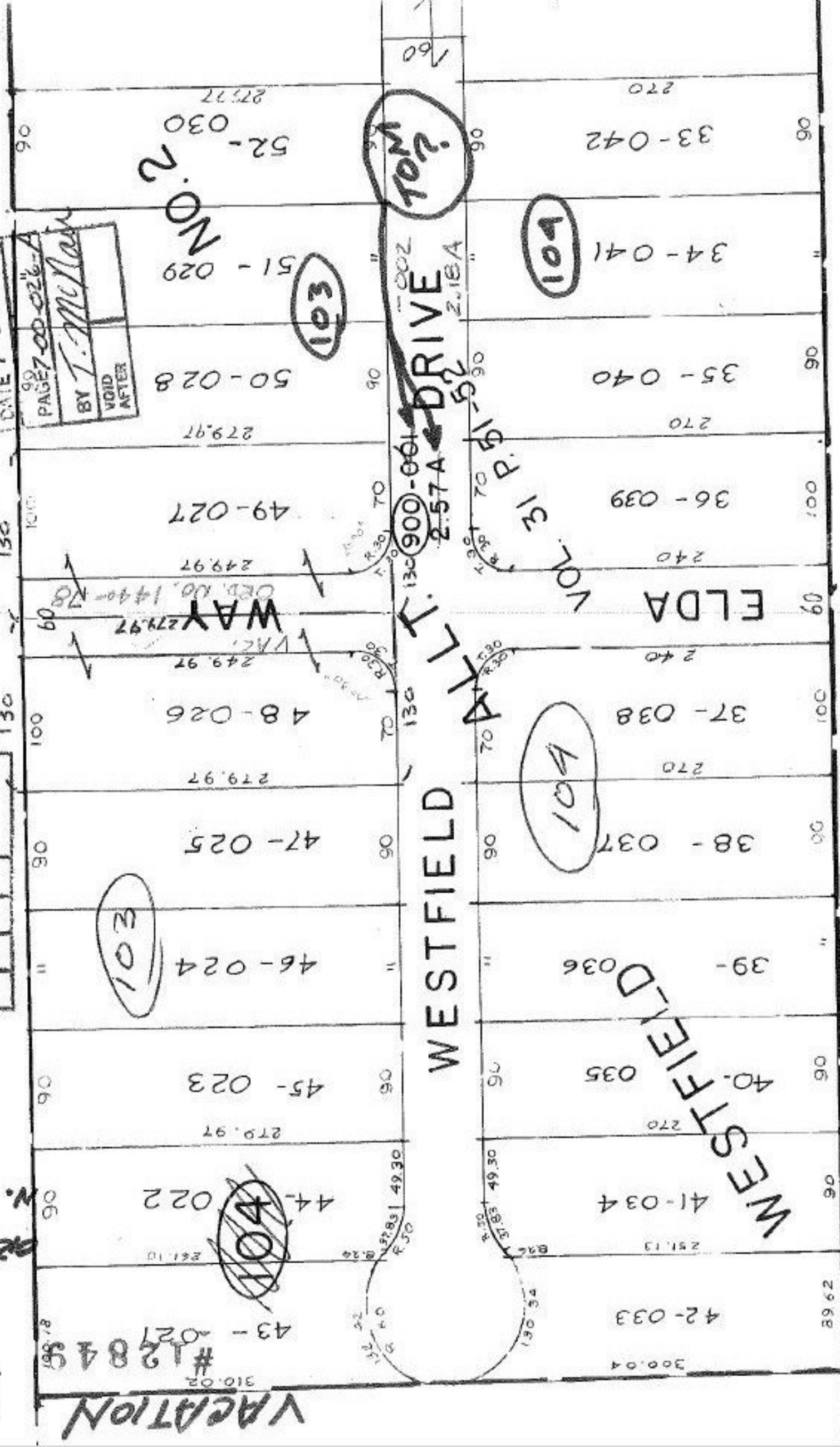
#12849
 APPROVED
 LORAIN CO.
 MAP DEPT.
 DATE 7-2-79

#18217
 NOV 21 1979

#21281

APPROVED
 LORAIN CO.
 MAP DEPT.
 DATE 7-7-79
 PAGE 7-00-026-A
 BY T. McRae
 VOID AFTER 13217

OF
 ELDMAY ST
 #12849
 VACATION



SEE 7-00 026-C