

#13205

102

Pt. -  
Pt. 6

SCHADEN

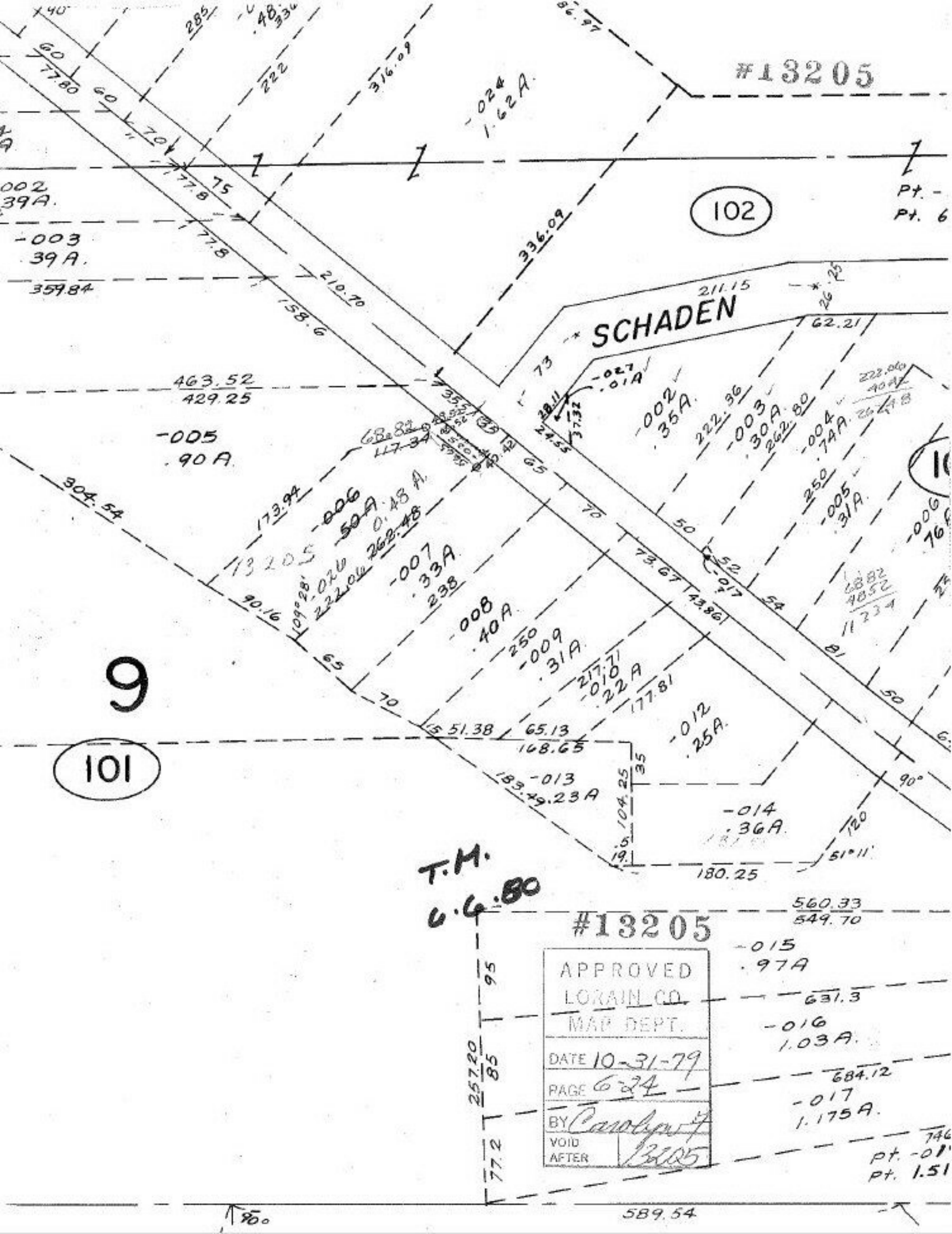
101

9

T.M.  
6.6.80

#13205

APPROVED	
LORAIN CO.	
MAP DEPT.	
DATE	10-31-79
PAGE	6-24
BY	Carolyn
VOID AFTER	13205



002  
39A.  
-003  
39A.  
359.84

-005  
90A.  
463.52  
429.25

006  
50A  
0.48 A  
262.48

-007  
33A  
238

-008  
40A  
250

-009  
31A  
217.71  
222A  
177.81

-013  
183.49.23A

-014  
36A  
187.51

-012  
25A  
177.81

-002  
35A  
222.96

-003  
30A  
262.80

-004  
74A  
250.74A

-005  
31A  
222.00  
40A  
267.78

-006  
76A  
68.82  
48.52  
1123.4

\* 26.25

62.21

54

50

50

90°

51°11'

560.33  
549.70

-015  
97A  
631.3

-016  
1.03A  
684.12

-017  
1.175A

746  
Pt. -01  
Pt. 1.51

589.54

↑ 90°