

JERUSALEM

RD.

#13201
#13202
#13203
#13204

APPROVED
LORAIN CO.
MAP DEPT.
DATE 11-9-79
PAGE 1-00-03-B
BY T. M. Paul

-031
7.55 A.

-032
6.24 A.

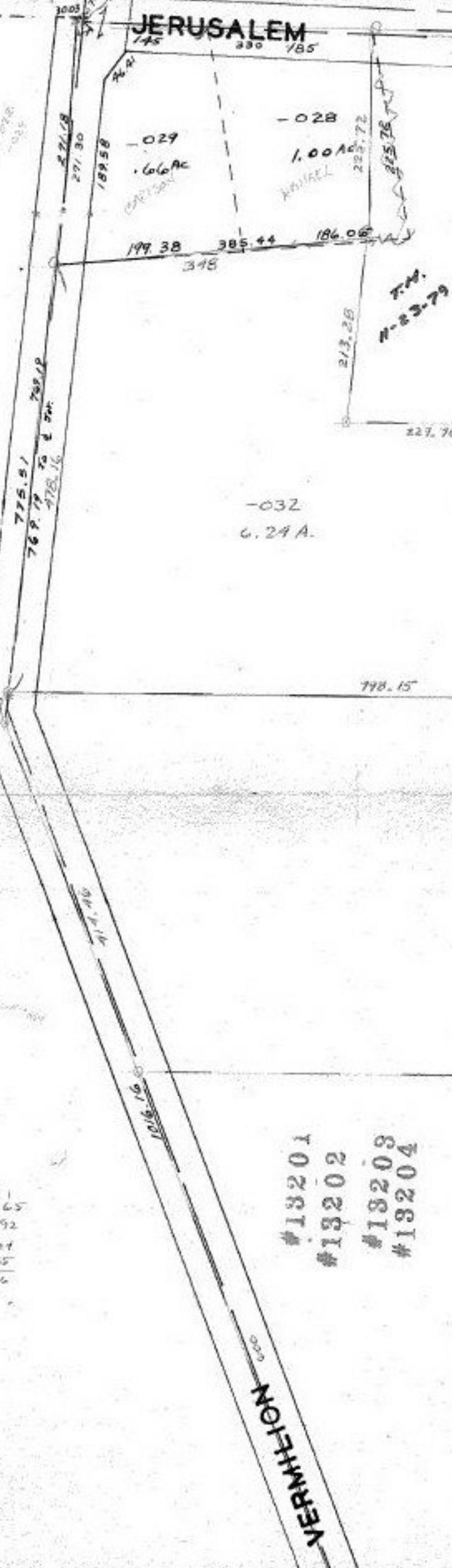
-033
B.92 A.

APPROVED
LORAIN CO.
MAP DEPT.
DATE 11-9-79
PAGE 1-00-03-B
BY T. M. Paul

-034
9.65 A.

#13201
#13202
#13203
#13204

VERMILION



2
9.65
8.92
6.24
7.55
22.86