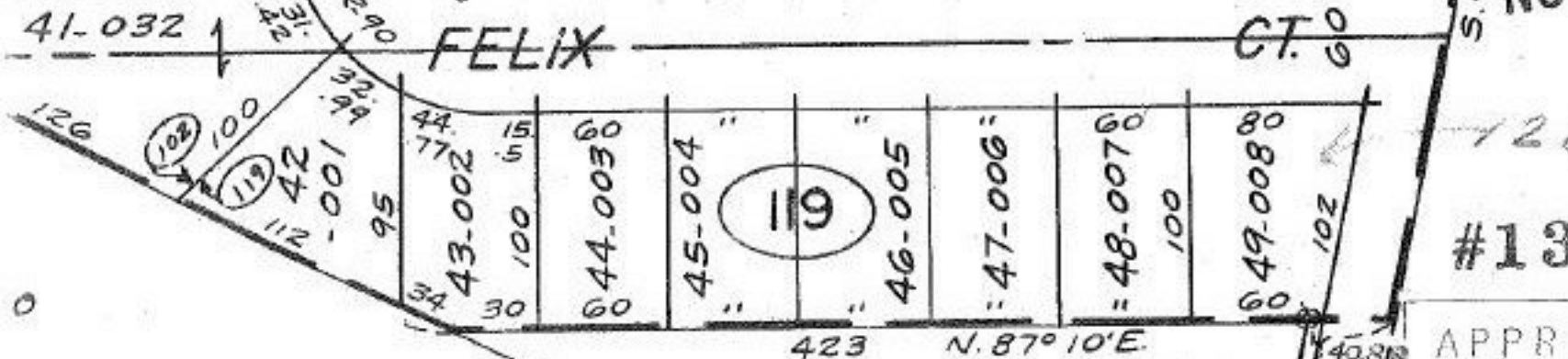
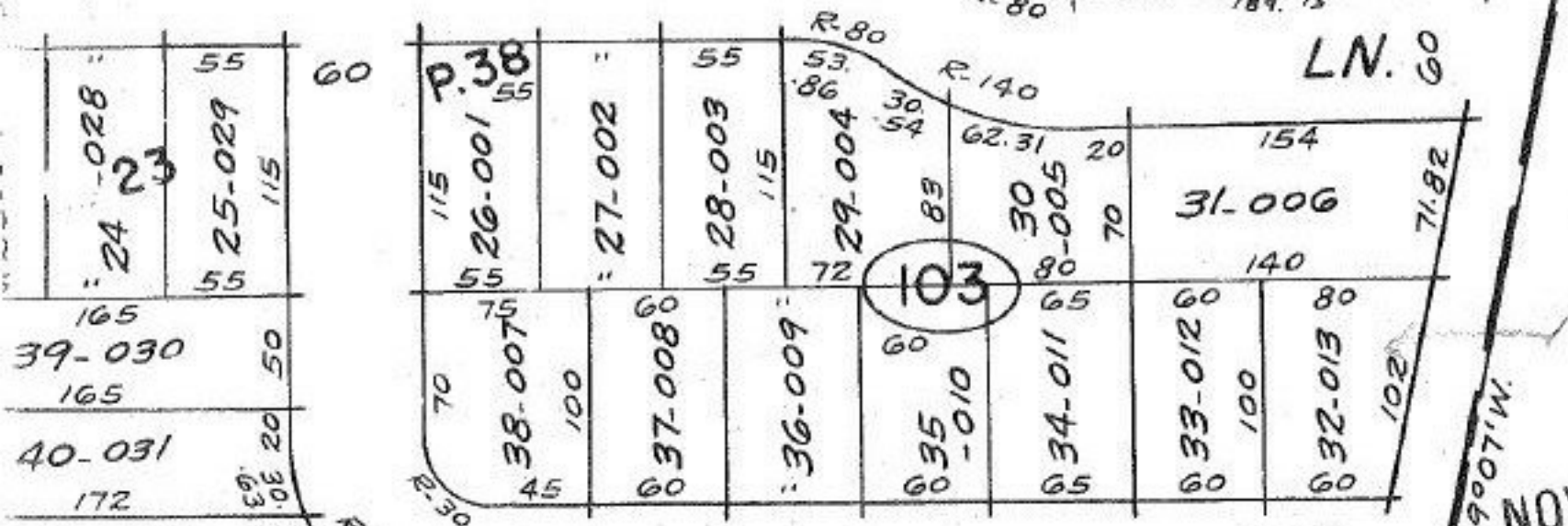
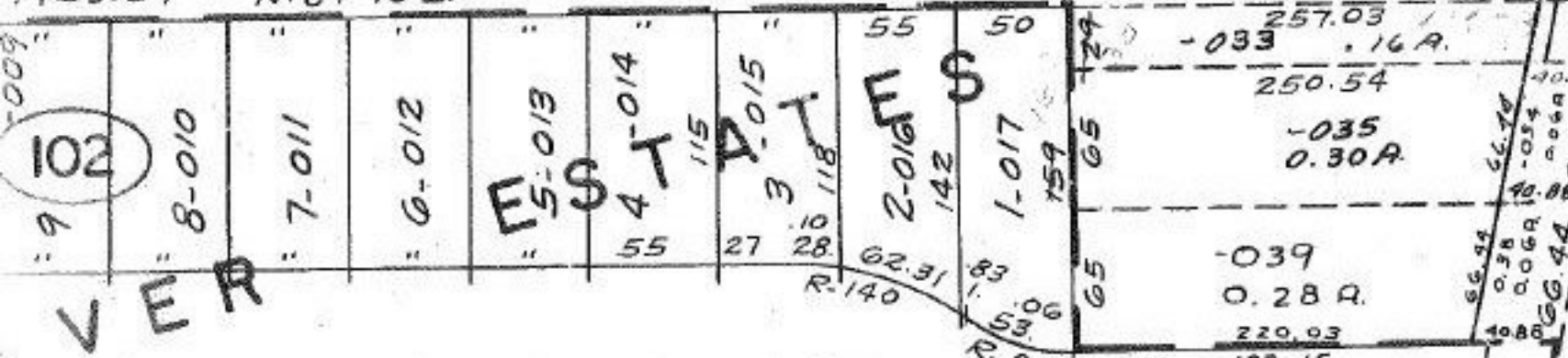


#13187

306.86
333.6

1424.03
1423.69" N. 87°10'E.



2692
2693
NOV 21 1979

#13187

APPROVED
LORAIN CO.
MAP DEPT.
DATE 10-24-79
PAGE 6-65
BY Carolyn
VOID AFTER 13/87

877.- Total

TURNPIKE

TURNPIKE
92.12