

#13185

Pt. - 065
Pt. 941A.

#13185

APPROVED
LORAIN CO.
MAP DEPT.

DATE 10-23-79

PAGE 1500 040-B

BY T. McLean

VOID
IF
RETER

10-27-79

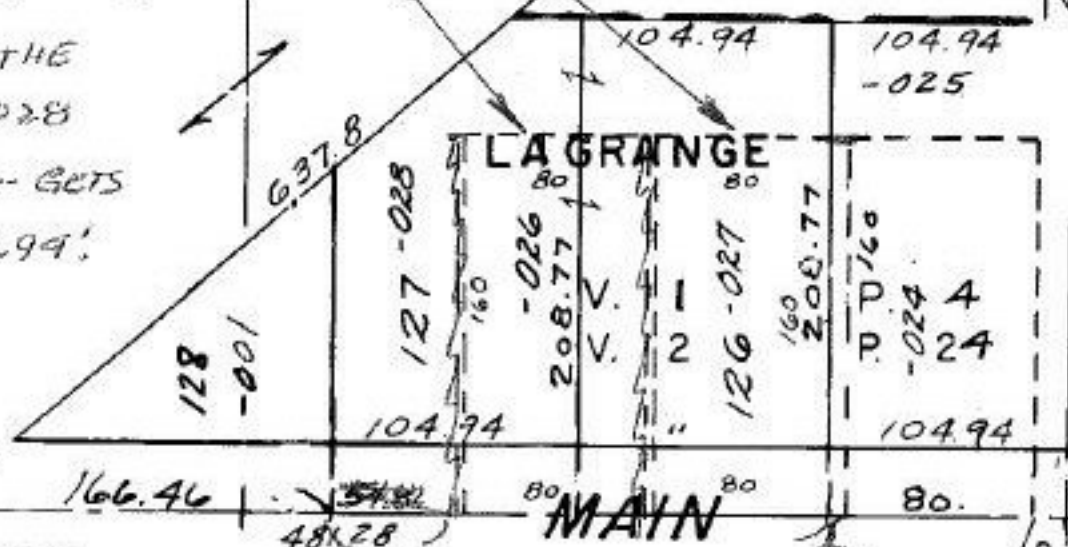


LIBERTY ST.

St.

309.50

NOTE: EACH
PARCEL -020
& -027 SHIFTS
4.94' EAST AS THIS
DIMENSION WAS
USED TWICE WHEN
LOTS WERE CUT OUT
THE SIZE OF THE
REMAINDER -028
ALSO CHANGES - GETS
ADDITIONAL 4.94'



MAIN

303

SEE 15.

54.82
4.94
49.88

54.82
381.28

LAGRANGE TWP.

SCALE: 1" = 100'