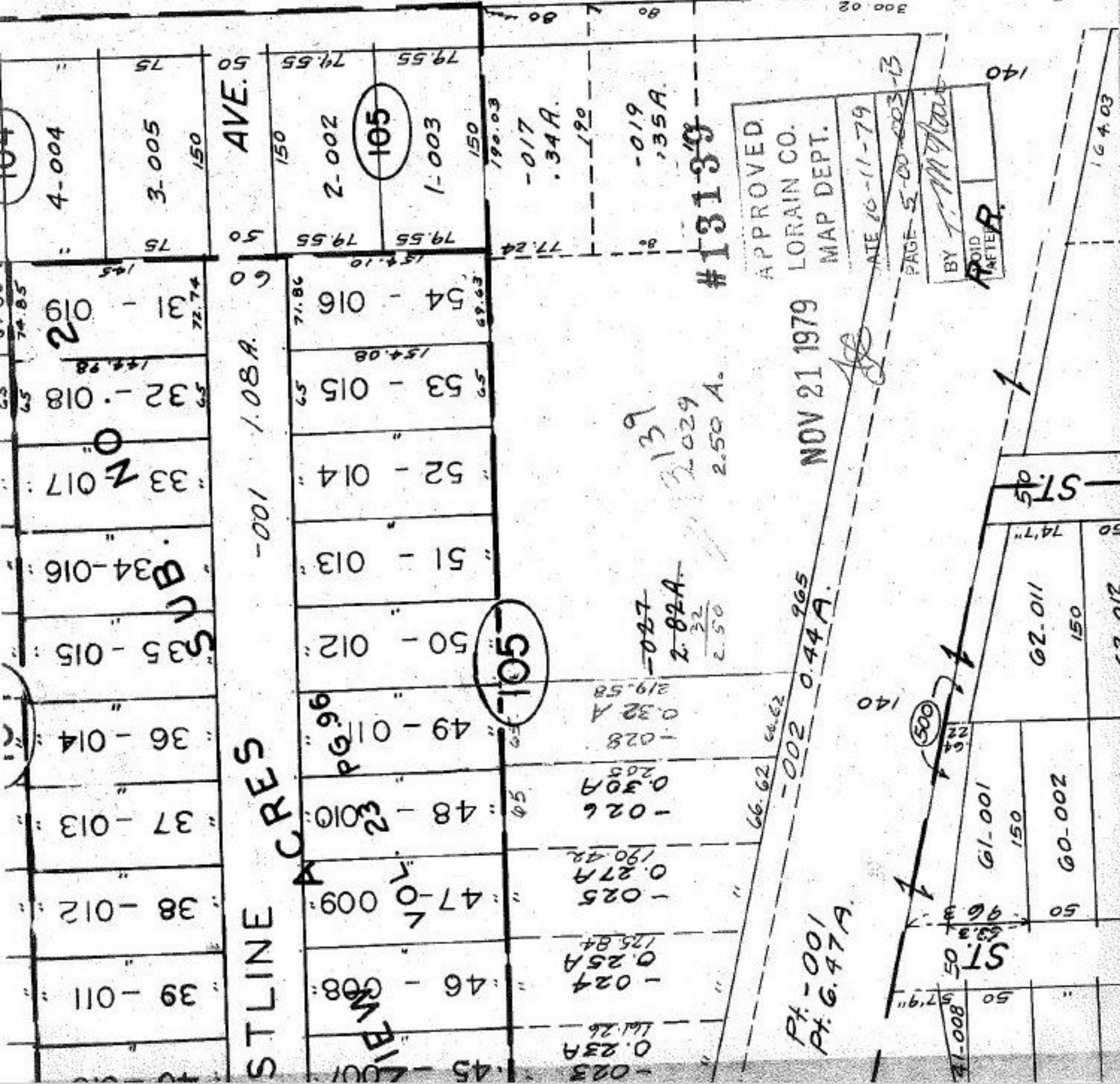


#13139

SEE 5-0



AVE.

1.08A.

STLINE ACRES

2-002 79.55
 105 79.55
 1-003 79.55
 150 190.03
 -017 77.24
 .34A.
 190
 -019
 .35A.

54 - 016 69.63
 53 - 015 65
 52 - 014
 51 - 013
 50 - 012
 49 - 011 66.62
 48 - 010 66.62
 47 - 009 66.62
 46 - 008
 45 - 007

45 - 007 0.23A
 46 - 008 0.25A
 47 - 009 0.25A
 48 - 010 0.26
 49 - 011 0.30A
 50 - 012 0.32A
 51 - 013
 52 - 014
 53 - 015
 54 - 016

105

#13139

APPROVED
 LORAIN CO.
 MAP DEPT.

NOV 21 1979

0.44A.

Pt. 001
Pt. 6.47A.

DATE 10-11-79
 PAGE 5-00-003-13
 BY T. M. [Signature]
 VOID AFTER

500

ST

ST

61-001

60-002

62-011

64-003

150

150

150

150

150

150

150

150