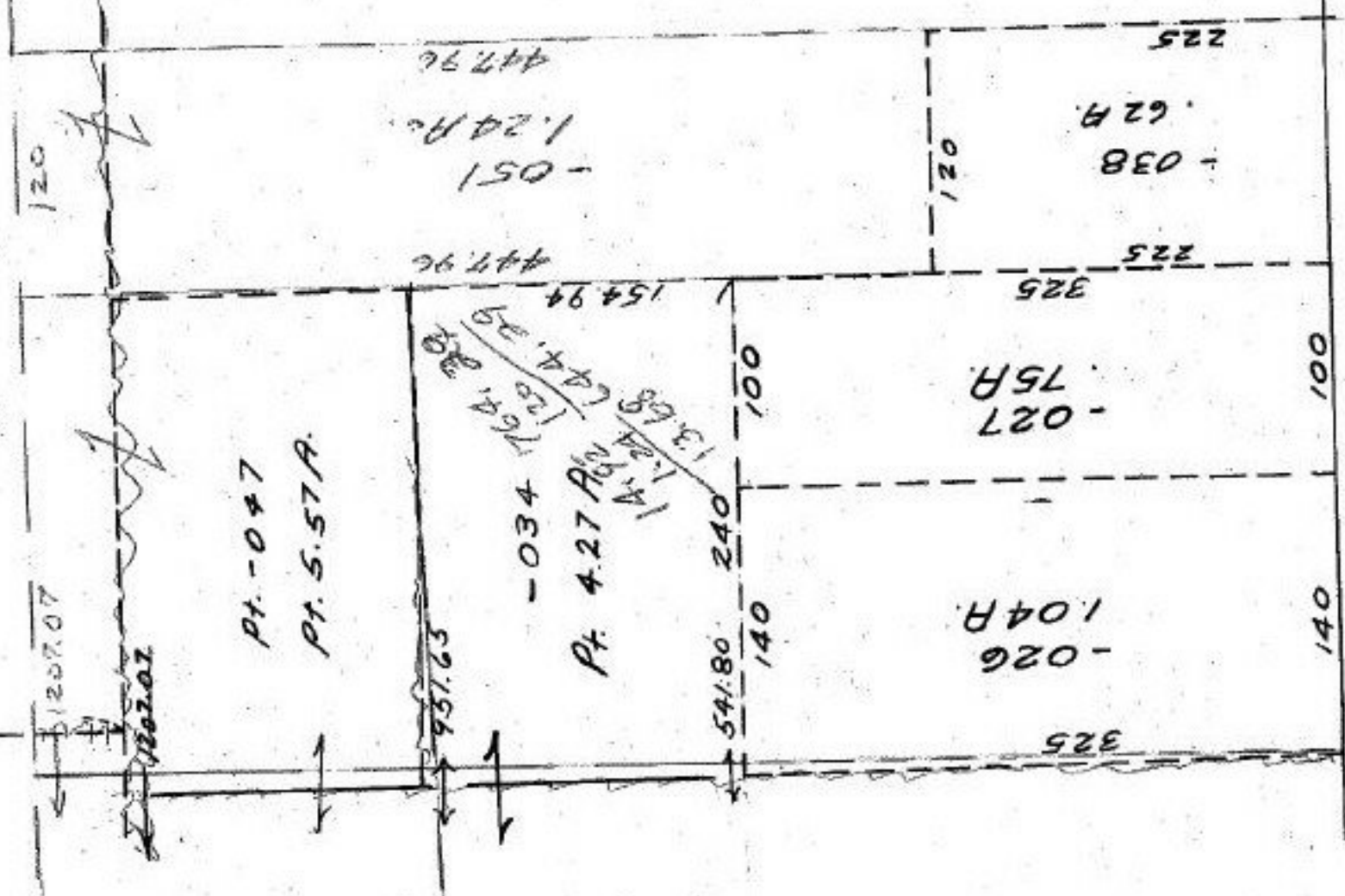


978.32  
~~764.32~~ 644.29

978.32  
764.29



-052 13.100  
-048  
14.92 A.  
13.68 A.

#13106

APPROVED.	
LORAIN CO.	
MAP DEPT.	
DATE	9-27-79
PAGE	12-00-0356
BY	<i>[Signature]</i>
VOID	
AFTER	

NOV 1 1979

*[Signature]*

SQUIRE

SEE 12-G