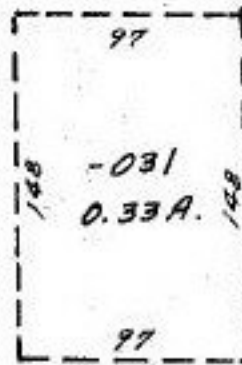


365.64

610.17

13102

098
PT. -032
PT. 10.76 A.
9.74 Ac.



-027
4.62 A.

#13102

NOV 7 1979

APPROVED LORAIN CO. MAP DEPT.
DATE 9-27-79
PAGE 7-00-026A
BY <i>[Signature]</i>
VOID AFTER

330.05

RIDGEVILLE