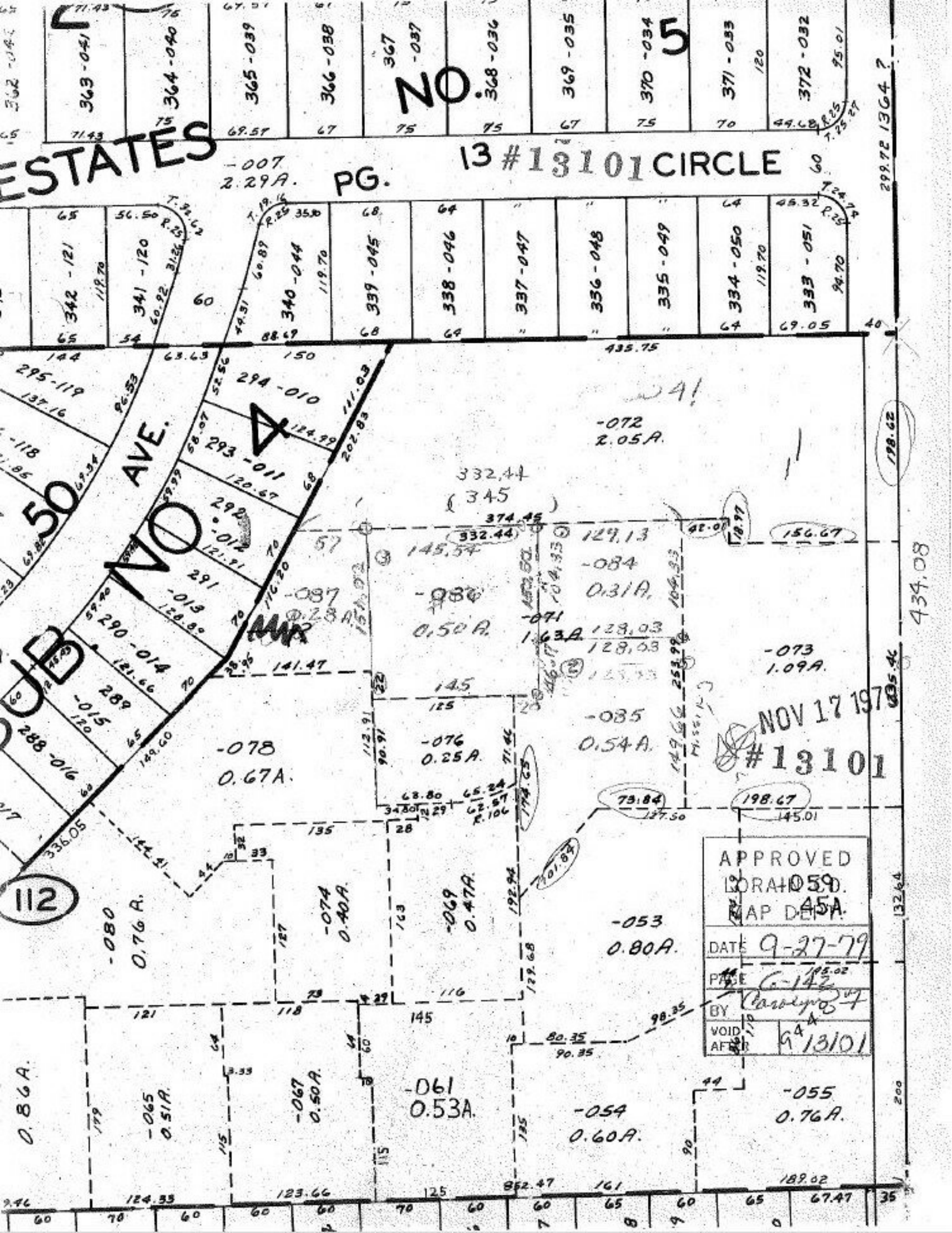


ESTATES

-007  
2.29A.

PG.

13 # 13101 CIRCLE



50

112

NO

5

APPROVED	LORAN D 59.
MAP DEPT.	45A.
DATE	9-27-79
PAGE	6-142
BY	Carlyne 57
VOID AFTER	9/13/01

NOV 17 1979  
# 13101

299.72 1364?

434.08

132.64

200

35

198.62

135.46

145.01

132.64

200

35

-072  
2.05A.

-080  
0.50A.

-085  
0.54A.

-078  
0.67A.

-076  
0.25A.

-053  
0.80A.

-074  
0.40A.

-069  
0.47A.

-054  
0.60A.

-055  
0.76A.

-061  
0.53A.

-065  
0.51A.

-067  
0.50A.

0.86A.

124.33

123.66

125

852.47

161

189.02

67.47

35

129.13

-084

0.31A.

-071  
1.63A

128.03

128.03

128.03

128.03

128.03

128.03

128.03

128.03

128.03

128.03

128.03

128.03

128.03

128.03

128.03

128.03

128.03

128.03

128.03

128.03

128.03

128.03

128.03

128.03

128.03

128.03

128.03

128.03

128.03

128.03

128.03

128.03

128.03

128.03

128.03

128.03

128.03

128.03

128.03

128.03

128.03

128.03

128.03

128.03

128.03

128.03

128.03

128.03

128.03

128.03

128.03

128.03

128.03

128.03

128.03

128.03

128.03

128.03

128.03

128.03

128.03

128.03

128.03

128.03

128.03

128.03

128.03

128.03

128.03

128.03

128.03

128.03

128.03

128.03

128.03

128.03

128.03

128.03

128.03

128.03

128.03

128.03

128.03

128.03

128.03

128.03

128.03

128.03

128.03

128.03

128.03

128.03

128.03

128.03

128.03

128.03

128.03

128.03

128.03

128.03

128.03

128.03

128.03

128.03

128.03

128.03

128.03

128.03

128.03

128.03

128.03

128.03

128.03

128.03

128.03

128.03

128.03

128.03

128.03

128.03

128.03

128.03

128.03

128.03

128.03

128.03

128.03

128.03

128.03

128.03

128.03

128.03

128.03

128.03

128.03

128.03

128.03

128.03

128.03

128.03

128.03

128.03

128.03

128.03

128.03

128.03

128.03

128.03

128.03

128.03

128.03

128.03

128.03

128.03

128.03

128.03

128.03

128.03

128.03

128.03

128.03

128.03

128.03

128.03

128.03

128.03

128.03

128.03

128.03

128.03

128.03

128.03

128.03

128.03

128.03

128.03

128.03

128.03

128.03

128.03

128.03

128.03

128.03

128.03

128.03

128.03

128.03

128.03

128.03

128.03

128.03

128.03

128.03

128.03

128.03

128.03

128.03

128.03

128.03

128.03

128.03

128.03

128.03

128.03

128.03

128.03

128.03

128.03

128.03

128.03

128.03

128.03

128.03

128.03

128.03

128.03

128.03

128.03

128.03

128.03

128.03

128.03

128.03

128.03

128.03

128.03

128.03

128.03

128.03

128.03

128.03

128.03

128.03

128.03

128.03

128.03

128.03

128.03