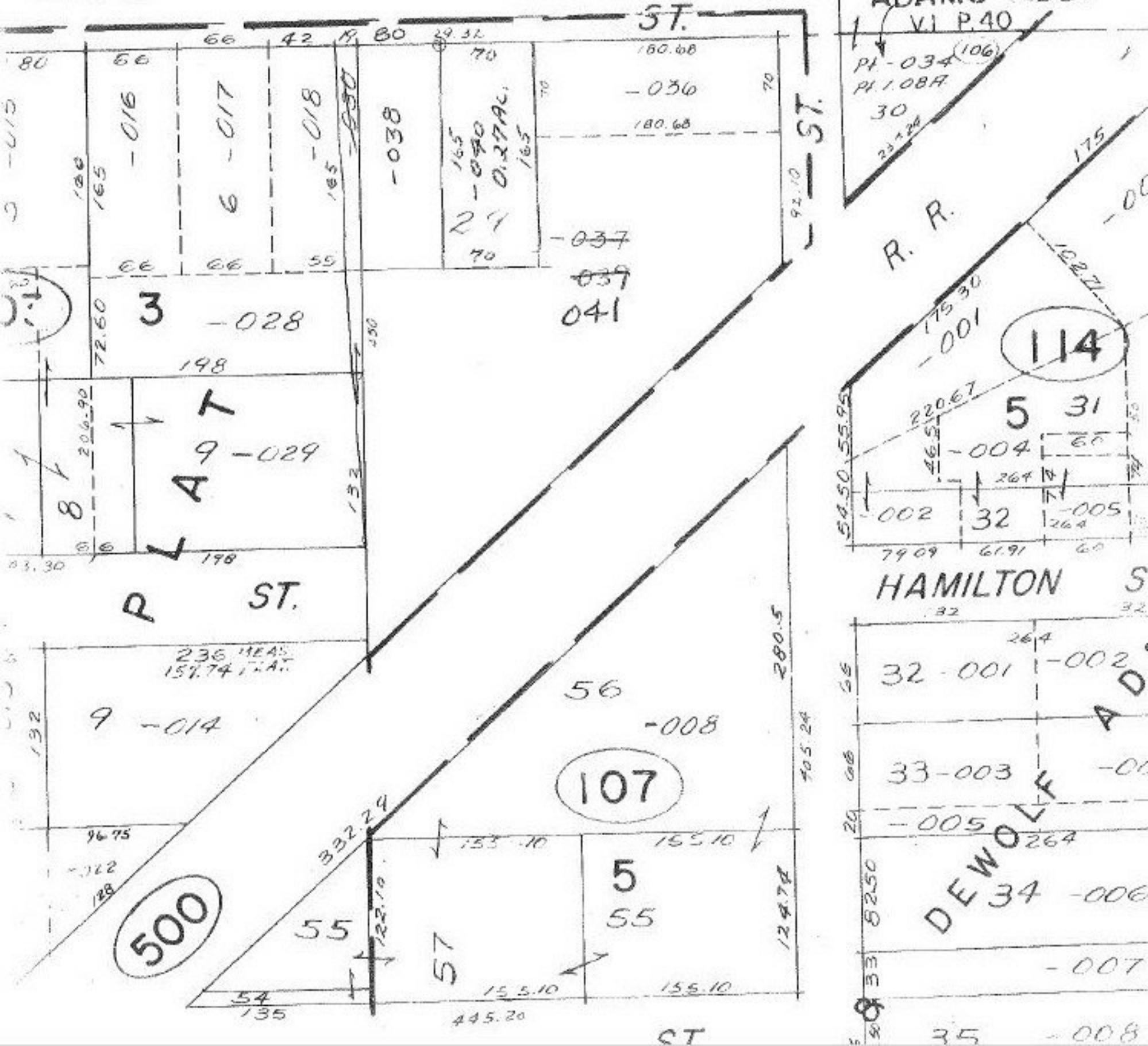


#13091

APPROVED
LORAIN CO.
MAP DEPT.
DATE 9-21-79
PAGE 18-00-021C
BY <i>J. Rollert</i>
VOID AFTER

OCT 13 1979

SEE 18-00-021-A



ADAMS ADD.

VI P. 40

PL 108A
30
237.28

R. R.

114

5 31

HAMILTON ST.

DEWOLF ADD.

107

500

5

55

57

55

54

135

ST.