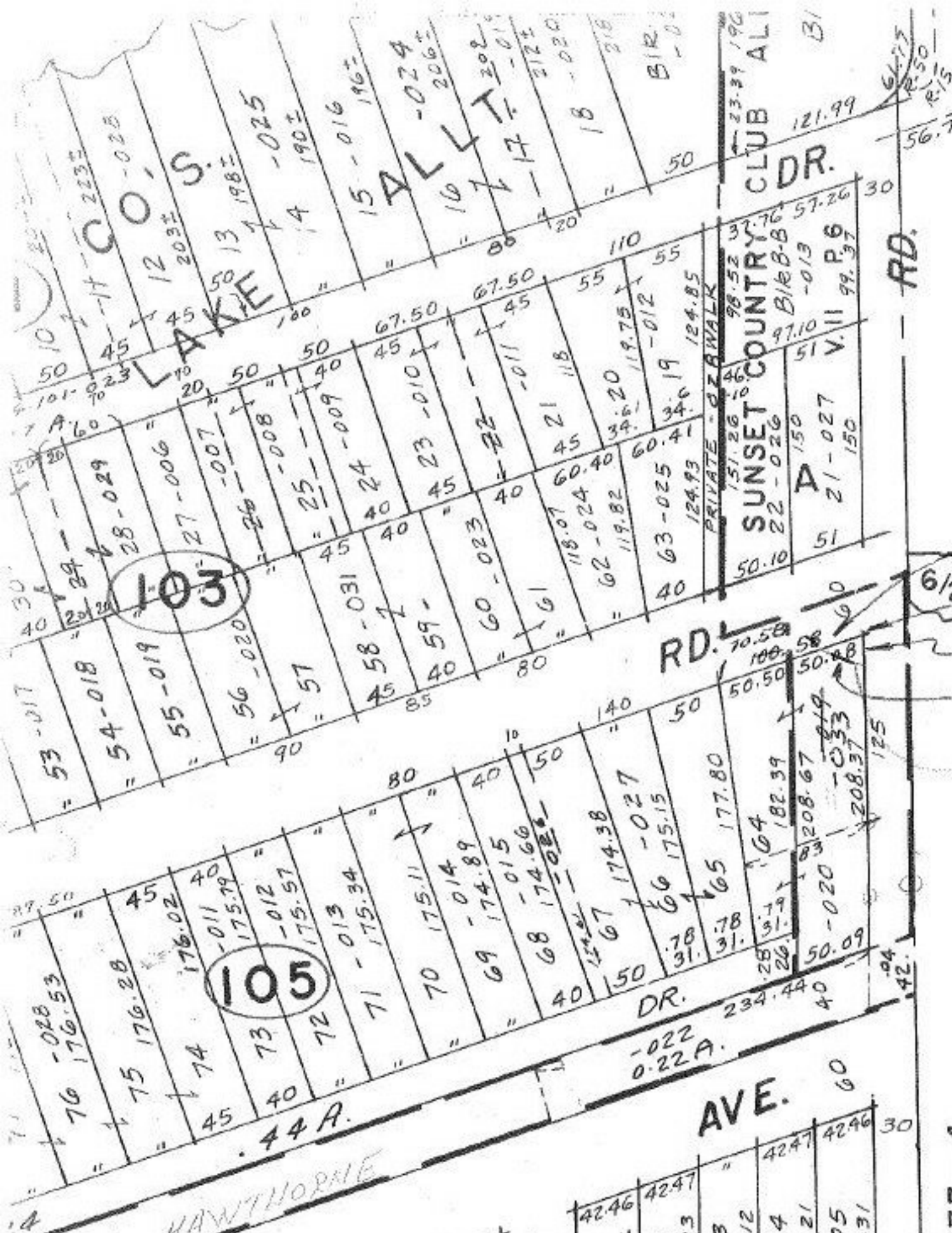


#13058



#13058

APPROVED LORAIN CO. MAP DEPT.	
DATE 4-7-79	
PAGE 3-00-034-1	
BY <i>T. McMan</i>	
VOID AFTER	

SEE 3-00-033-A

NOV 24 1979

130.86	52.83
107.025	147.14
26.50.27	
100.53	
09.026	40

AVE. 50

124.05	42.46
106-001	137.14
105-002	150.22
58-003	163.31
57-004	176.39
56-005	189.48
104-006	59-029
103-007	60-030

ALLT AVE. 50

126.86	42.46
40	139.94
2-002	153.03
3-003	166.12
4-004	179.21
5-005	192.31
55-006	6-031
54-007	7-032
53-008	8-033
52-009	9-034

SEE 3-00-033-A