

101

#13040

← 640.13 →

75

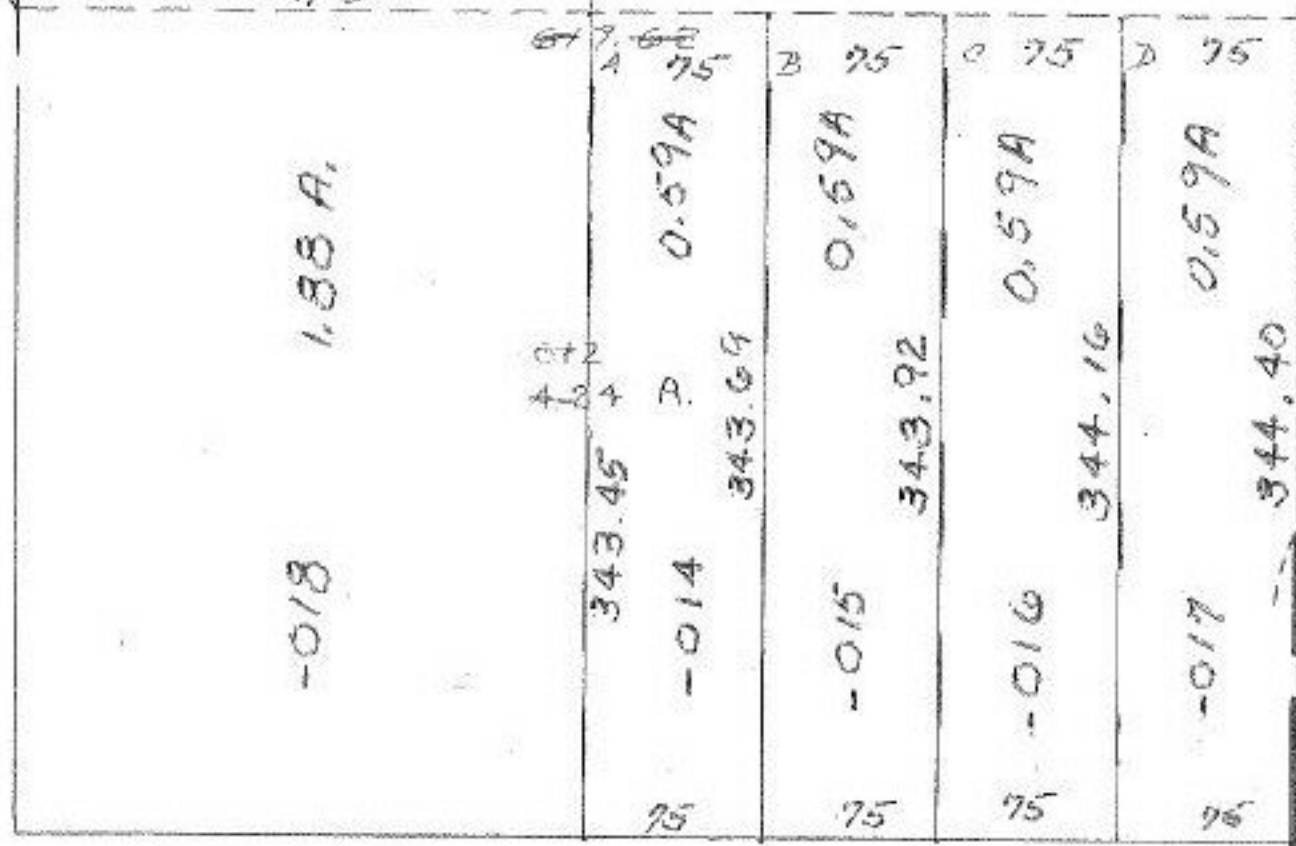
237.82

640.13

highway
centerline

75
50
75

N. 0° 33' 40" W.
737.07



SKYLINE

NOV 26 1979

#13040

APPROVED
LORAIN CO.
MAP DEPT.

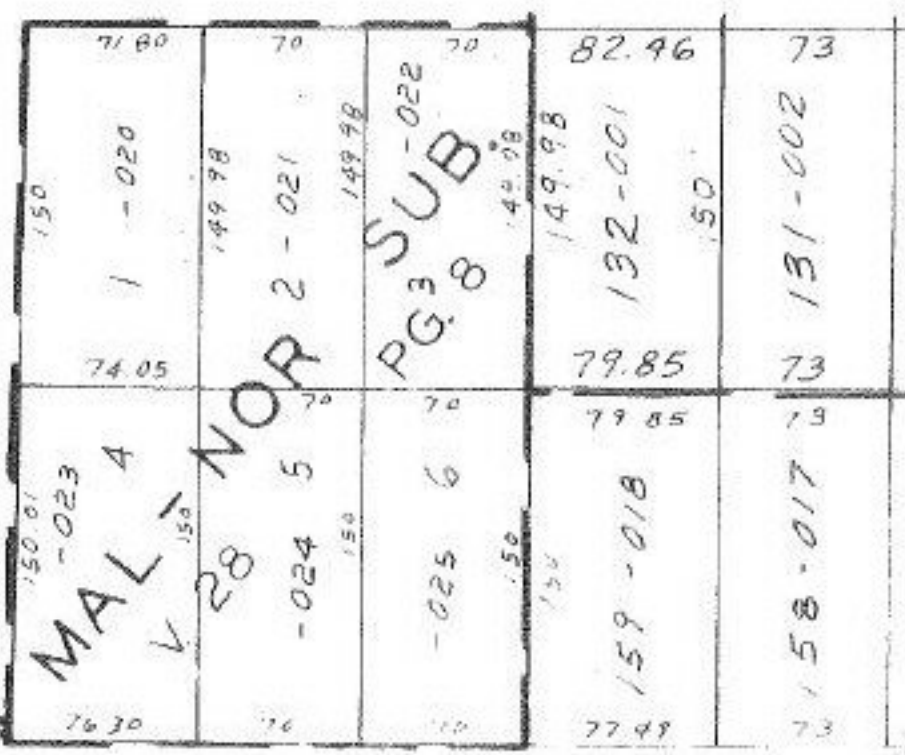
DATE 9-5-79

PAGE 02-02-014-19

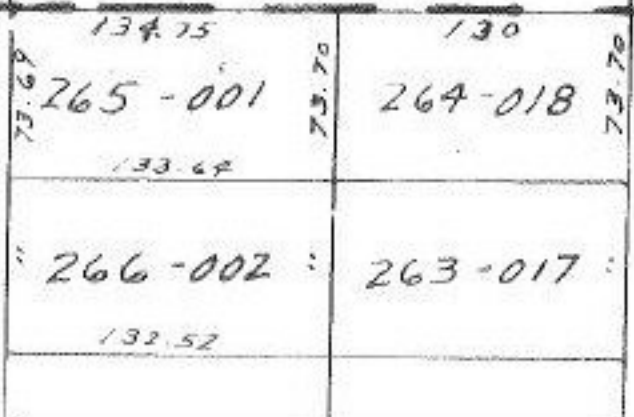
BY Carolyn

VOID AFTER 13040

AVE.



36th



2-02-0, 3-0

101