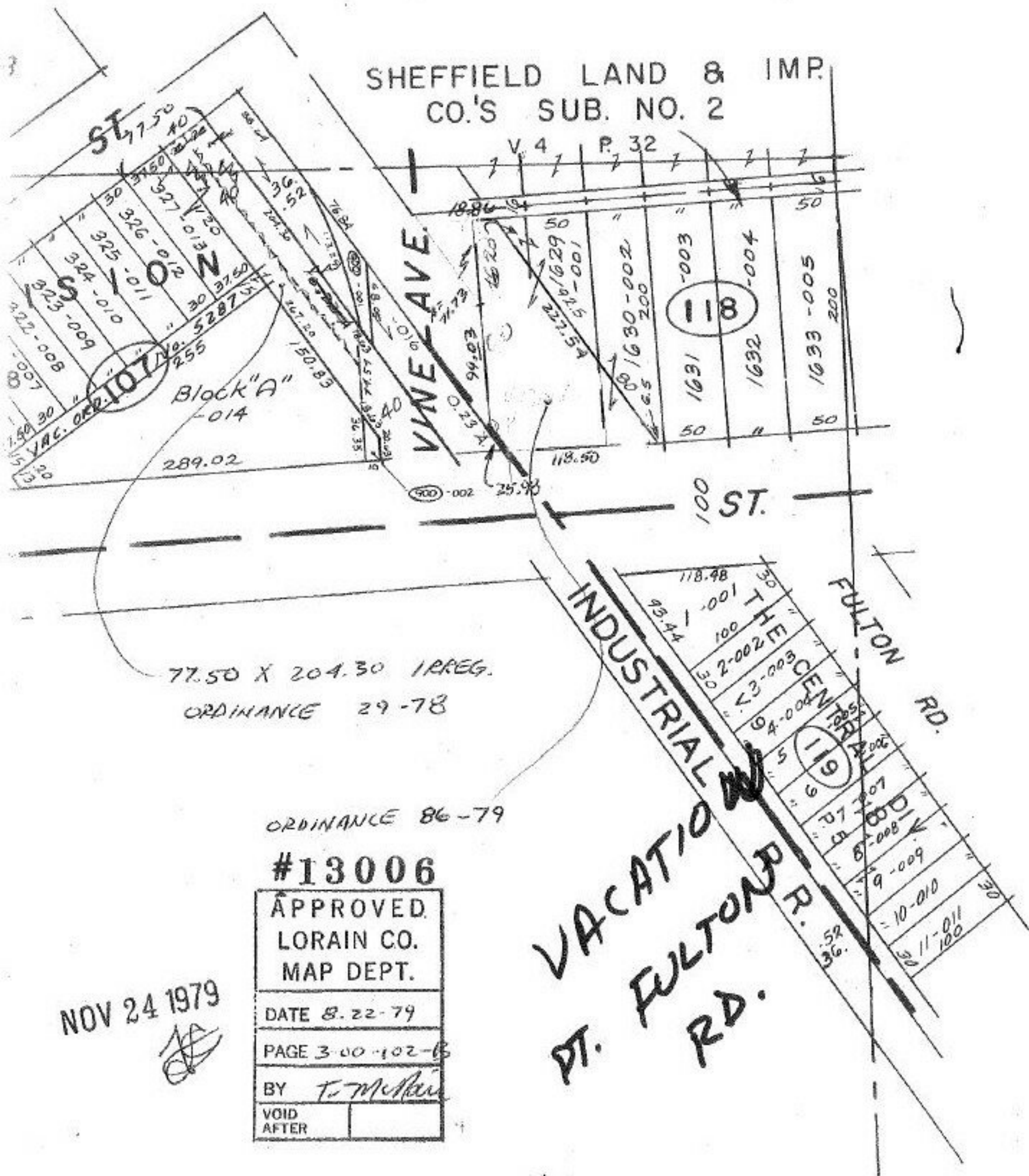


SHEFFIELD LAND & IMP.
CO.'S SUB. NO. 2

V 4 P 32



77.50 X 204.30 IRREG.
ORDINANCE 29-78

ORDINANCE 86-79

#13006

APPROVED.	
LORAIN CO.	
MAP DEPT.	
DATE	8.22-79
PAGE	3-00-102-B
BY	F. McMan
VOID AFTER	

NOV 24 1979

501