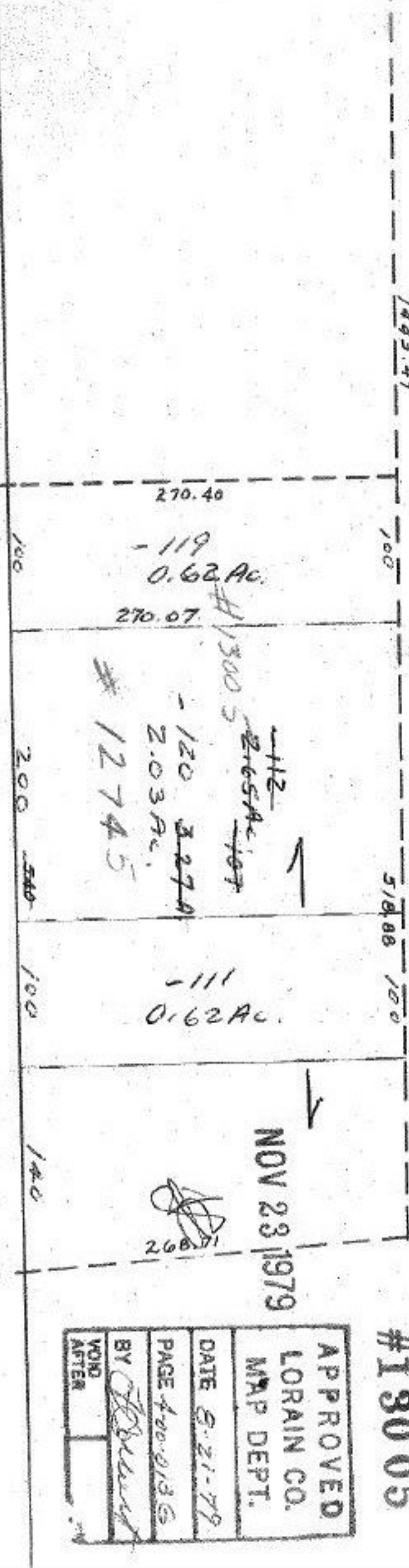


AVON CITY

7-C

1469.82

RD.



APPROVED
LORAIN CO.
MAP DEPT.
DATE 8-21-79
PAGE 400-0136
BY <i>[Signature]</i>
VOND AFTER

#13005

LORAIN COUNTY MAP DEPT.
P. P. No.

-066
10.03 A.

1414

1443.49

270.40

270.07

12745

-111
0.62 Ac.

[Signature]
260

335.20