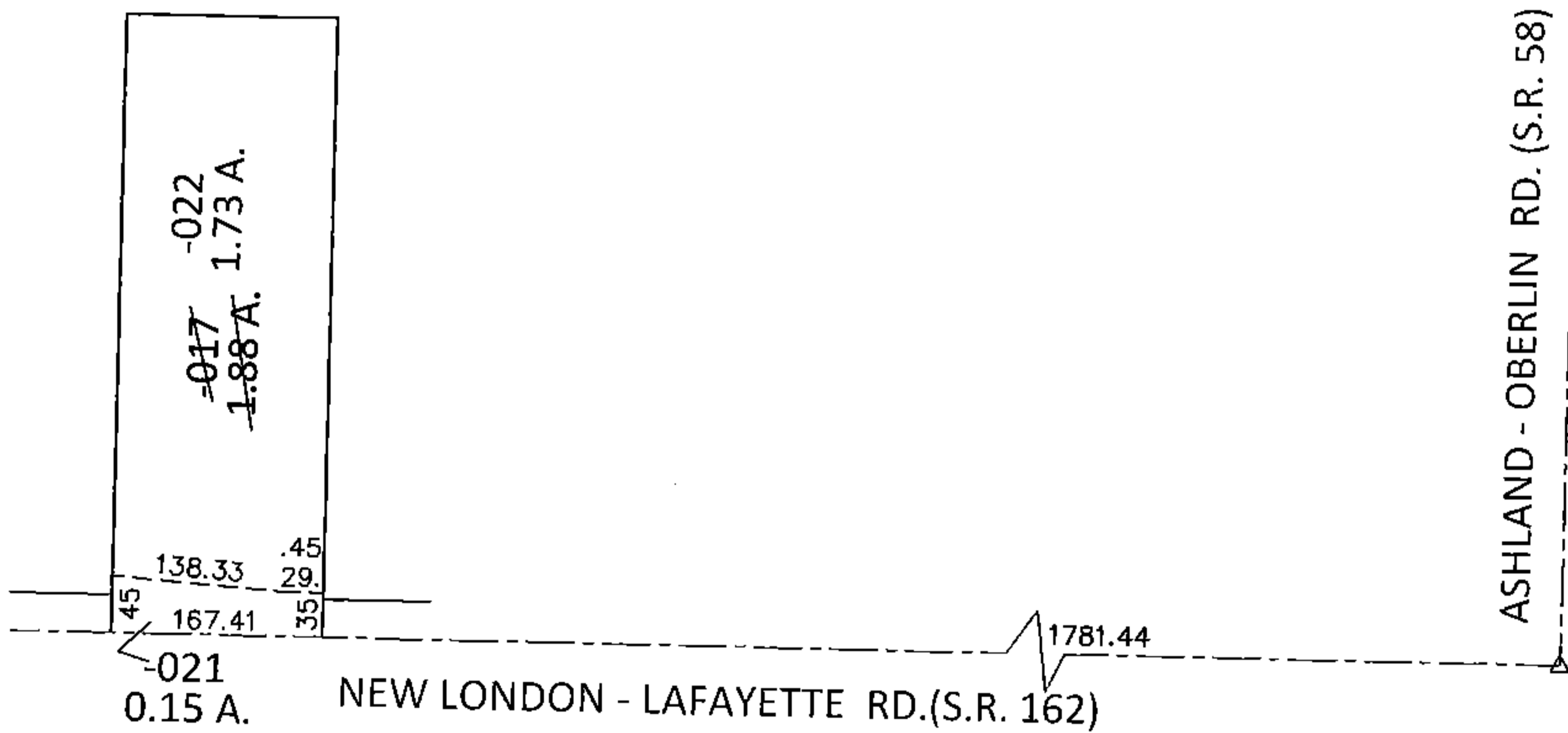
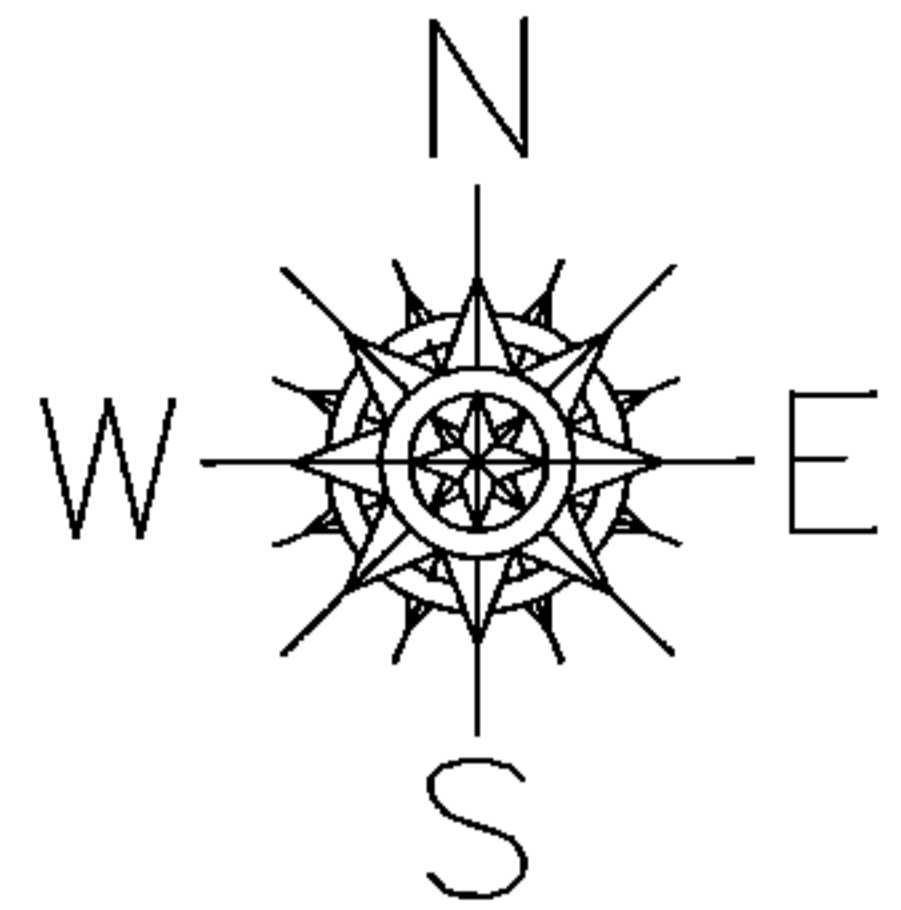


PARENT PARCEL: 21-05-001-000-017

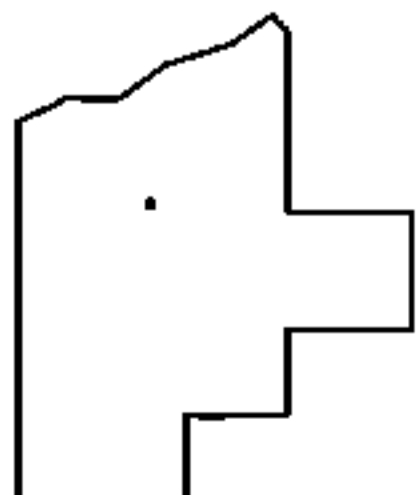
CHILD PARCEL: 21-05-001-000-021, -022

STARTING POINT: AT A R.R. SPIKE AT THE INTERSECTION OF C/L OF S.R.162 AND C/L OF S.R.58

13-00463



LOR-162-5.77
7-WD



SPLITS/DEEDS PROCESSED

LORAIN COUNTY TAX MAP DEPARTMENT
226 MIDDLE AVE. ELYRIA, OHIO

SURVEYED BY: SCOTT J. HAWKINS
 CLOSURE: .01:10,000
 MAP PAGE(S): 21-05-001-A
 APPROVED BY: RRM DATE: 8-14-13
 SCALE: 1"= 200 PRIOR INST.: 20110390348