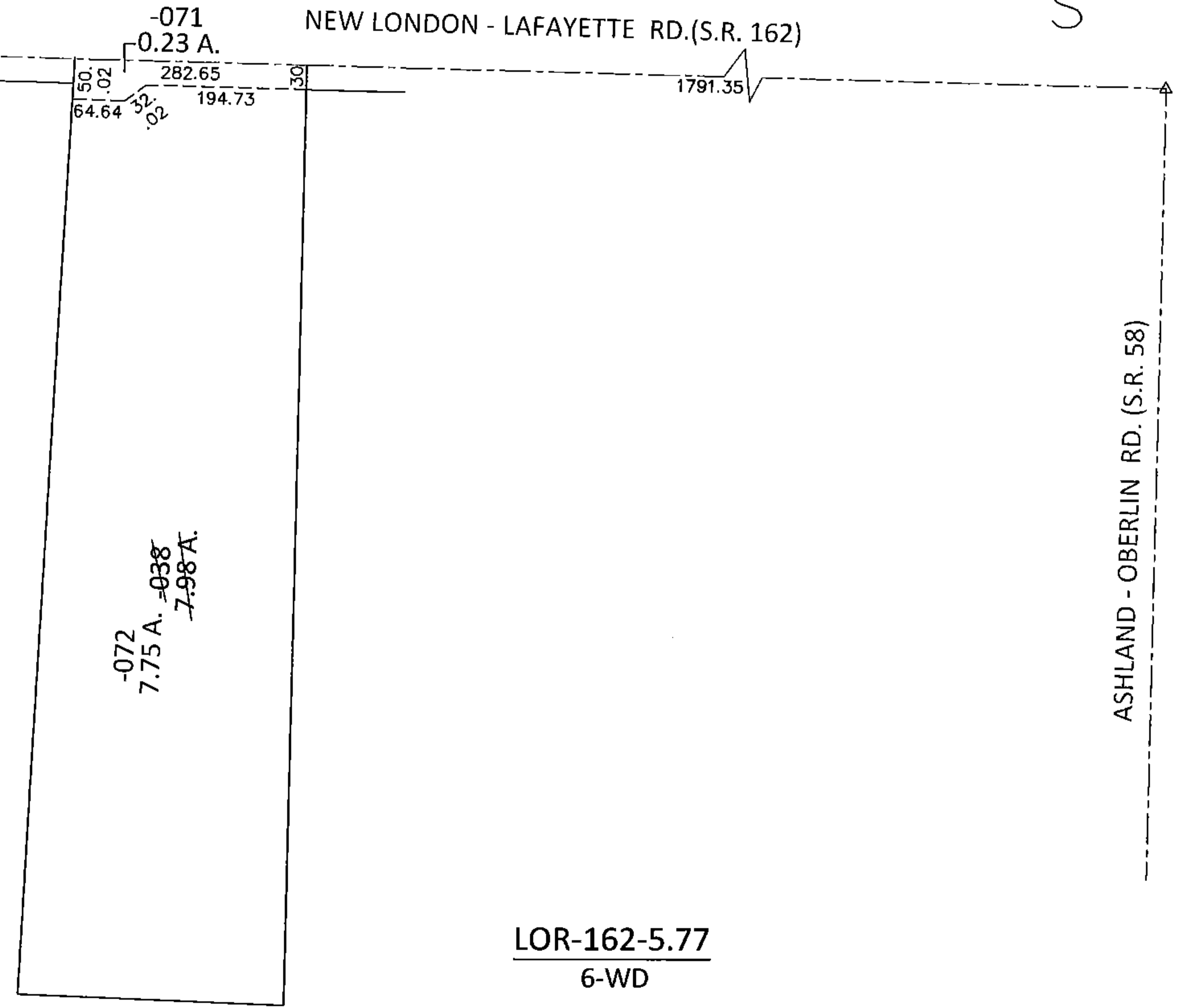
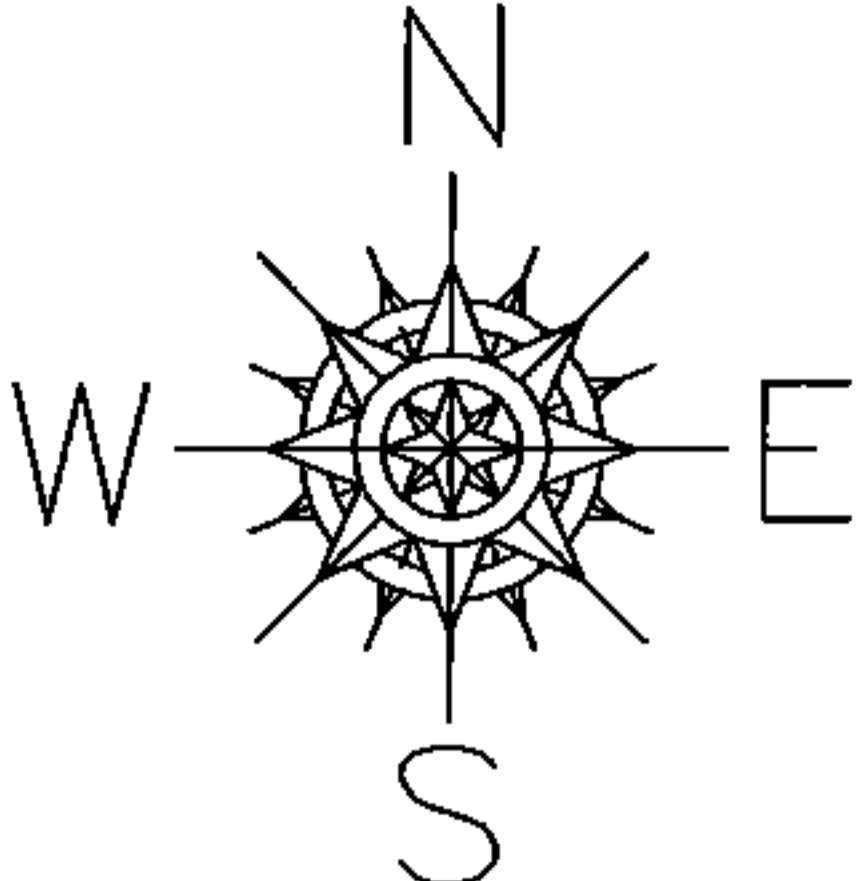


PARENT PARCEL: 21-04-000-000-038

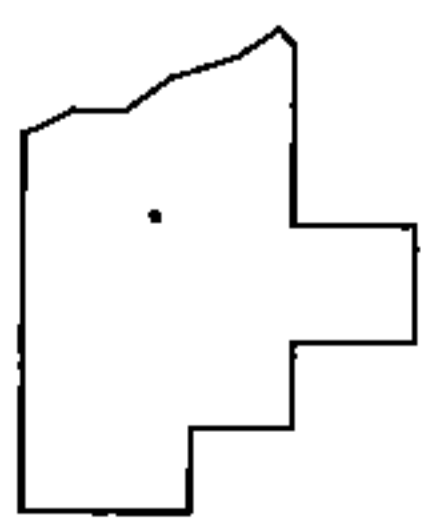
CHILD PARCEL: 21-04-000-000-071, -072

STARTING POINT: AT A R.R. SPIKE AT THE INTERSECTION OF C/L OF S.R.162 AND C/L OF S.R.58

13-00462



LOR-162-5.77
6-WD



SPLITS/DEEDS PROCESSED
LORAIN COUNTY TAX MAP DEPARTMENT
226 MIDDLE AVE. ELYRIA, OHIO

SURVEYED BY:	SCOTT J. HAWKINS
CLOSURE:	.01:10,000
MAP PAGE(S):	21-F
APPROVED BY:	RRM DATE: 8-14-13
SCALE:	1"= 200 PRIOR INST.: 19970495504