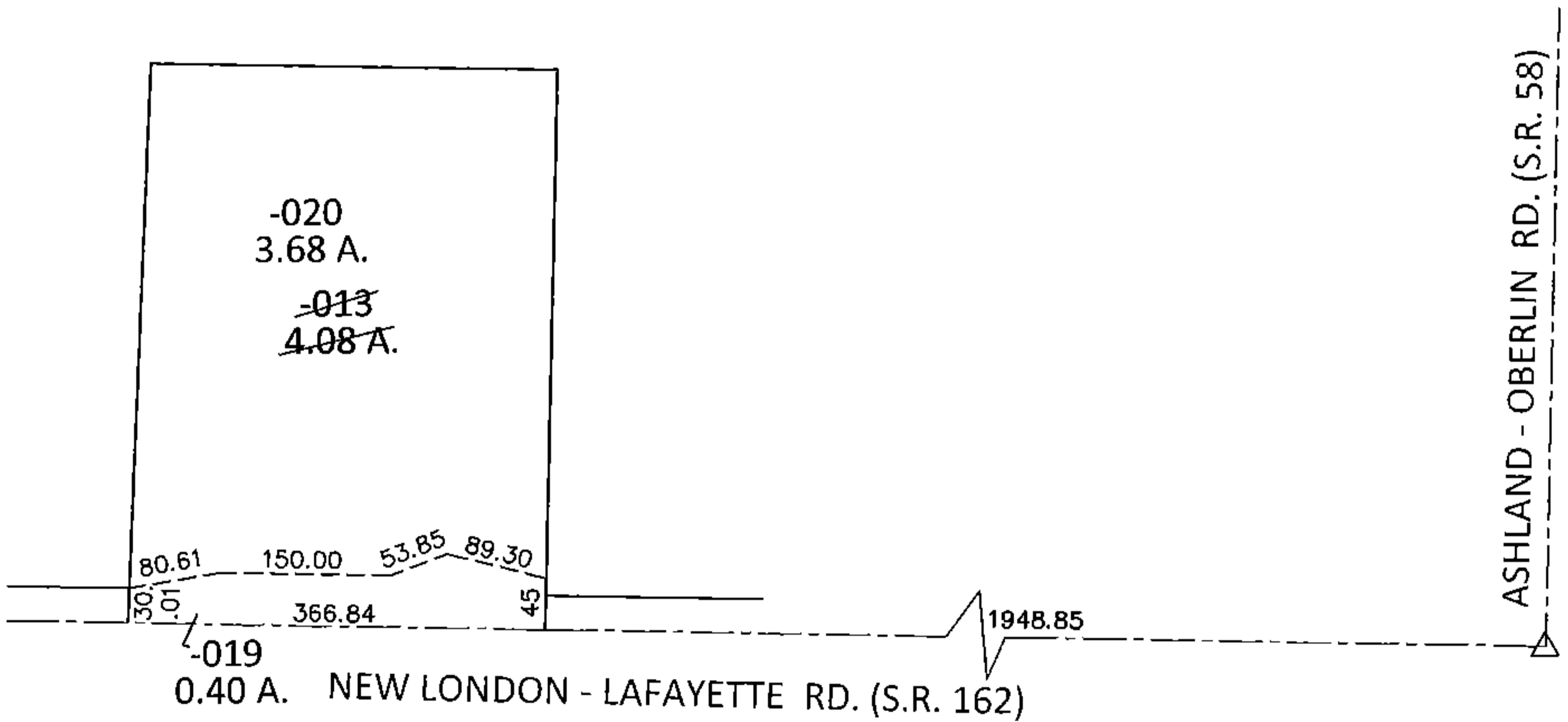
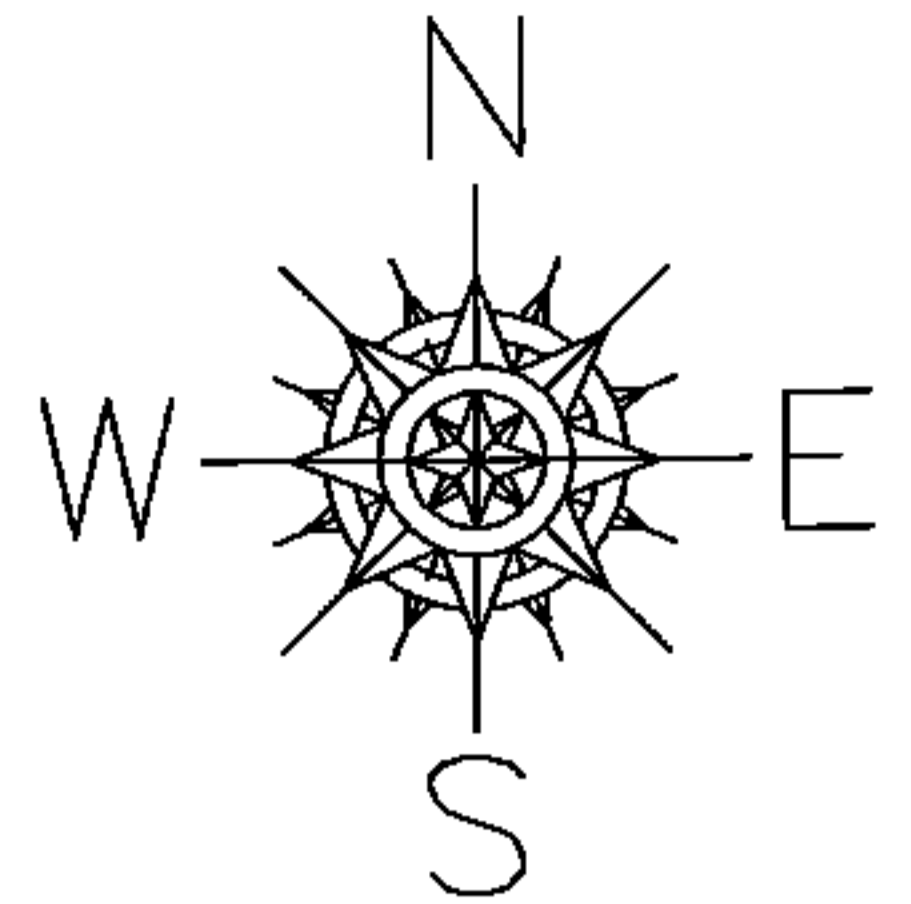


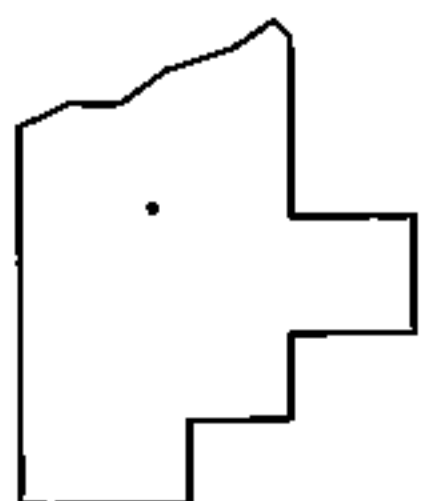
PARENT PARCEL: 21-05-001-000-013  
CHILD PARCEL: 21-05-001-000-019, -020  
STARTING POINT: AT A R.R. SPIKE AT THE INTERSECTION OF C/L OF S.R. 162 AND C/L OF S.R. 58

**13-00461**



LOR-162-5.77

5-WD



**SPLITS/DEEDS PROCESSED**

LORAIN COUNTY TAX MAP DEPARTMENT  
226 MIDDLE AVE. ELYRIA, OHIO

SURVEYED BY: SCOTT J. HAWKINS  
CLOSURE: .01:10,000  
MAP PAGE(S): 21-05-001-A  
APPROVED BY: RRM DATE: 8-14-13  
SCALE: 1"= 200 PRIOR INST.: 19980575777