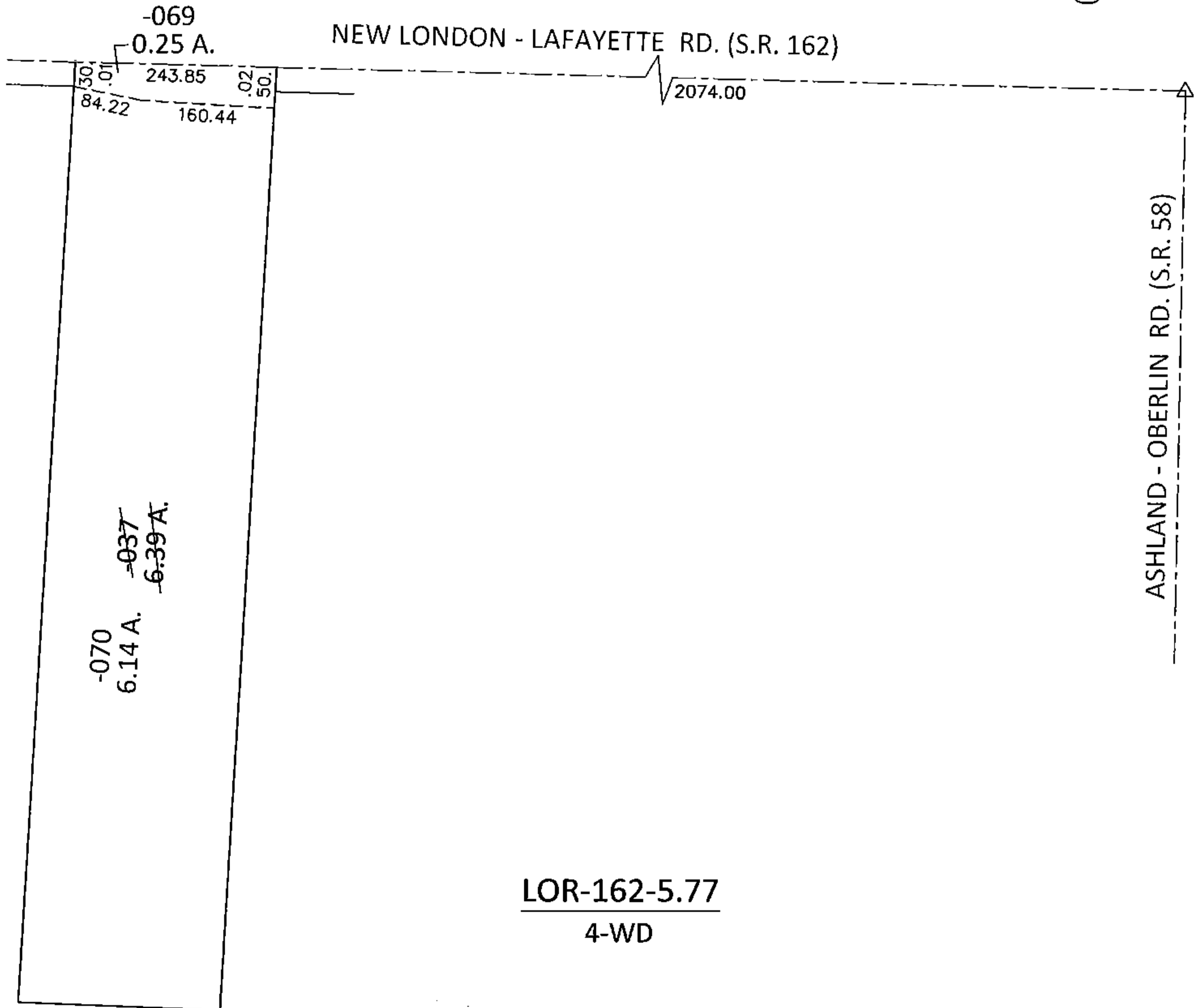
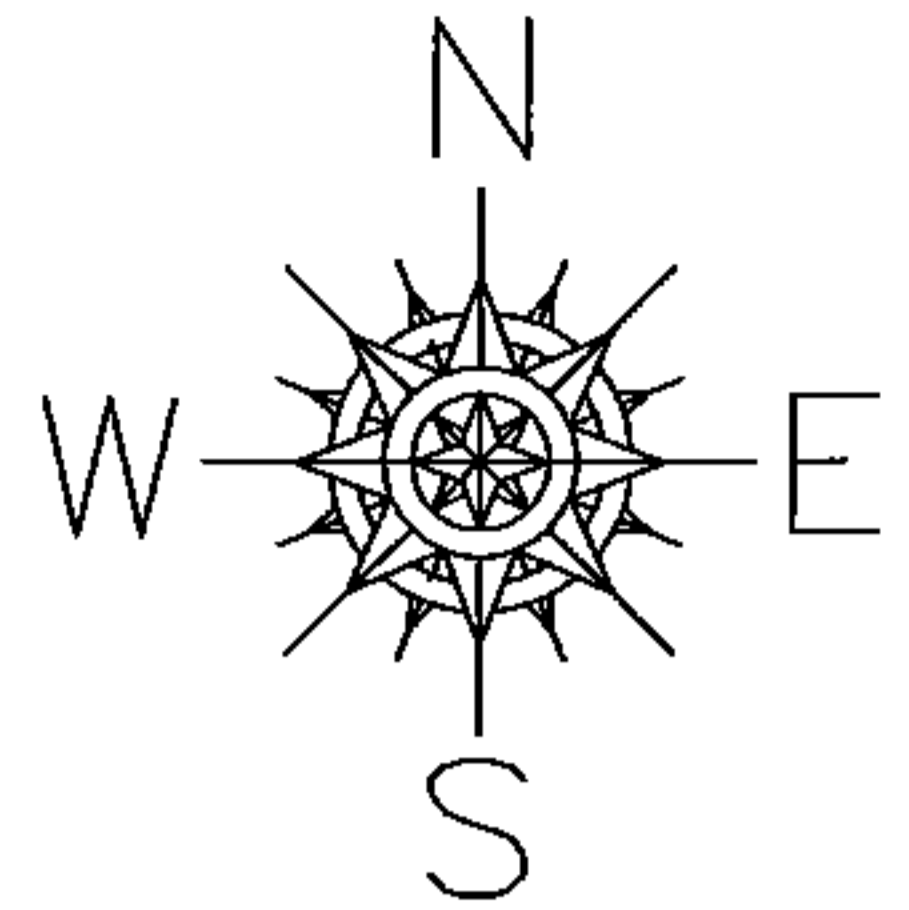


PARENT PARCEL: 21-04-000-000-037

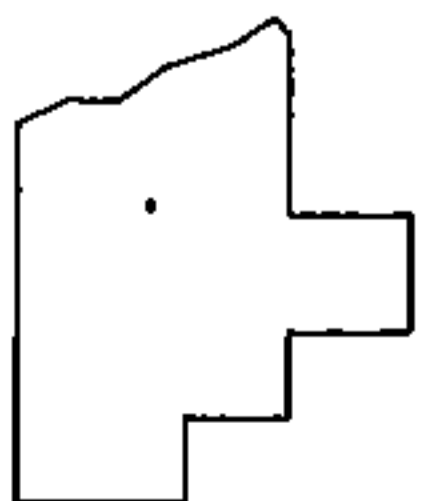
CHILD PARCEL: 21-04-000-000-069, -070

STARTING POINT: AT A R.R. SPIKE AT THE INTERSECTION OF C/L OF S.R.162 AND C/L OF S.R.58

13-00460



LOR-162-5.77
4-WD



SPLITS/DEEDS PROCESSED

LORAIN COUNTY TAX MAP DEPARTMENT
226 MIDDLE AVE. ELYRIA, OHIO

SURVEYED BY: SCOTT J. HAWKINS

CLOSURE: .00:10,000

MAP PAGE(S): 21-F

APPROVED BY: RRM DATE: 8-14-13

SCALE: 1"= 200 PRIOR INST.: 20030890850