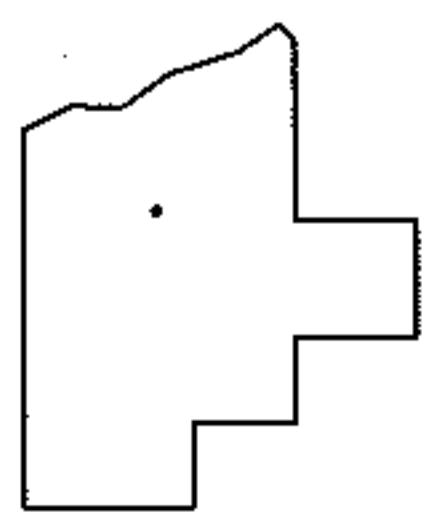
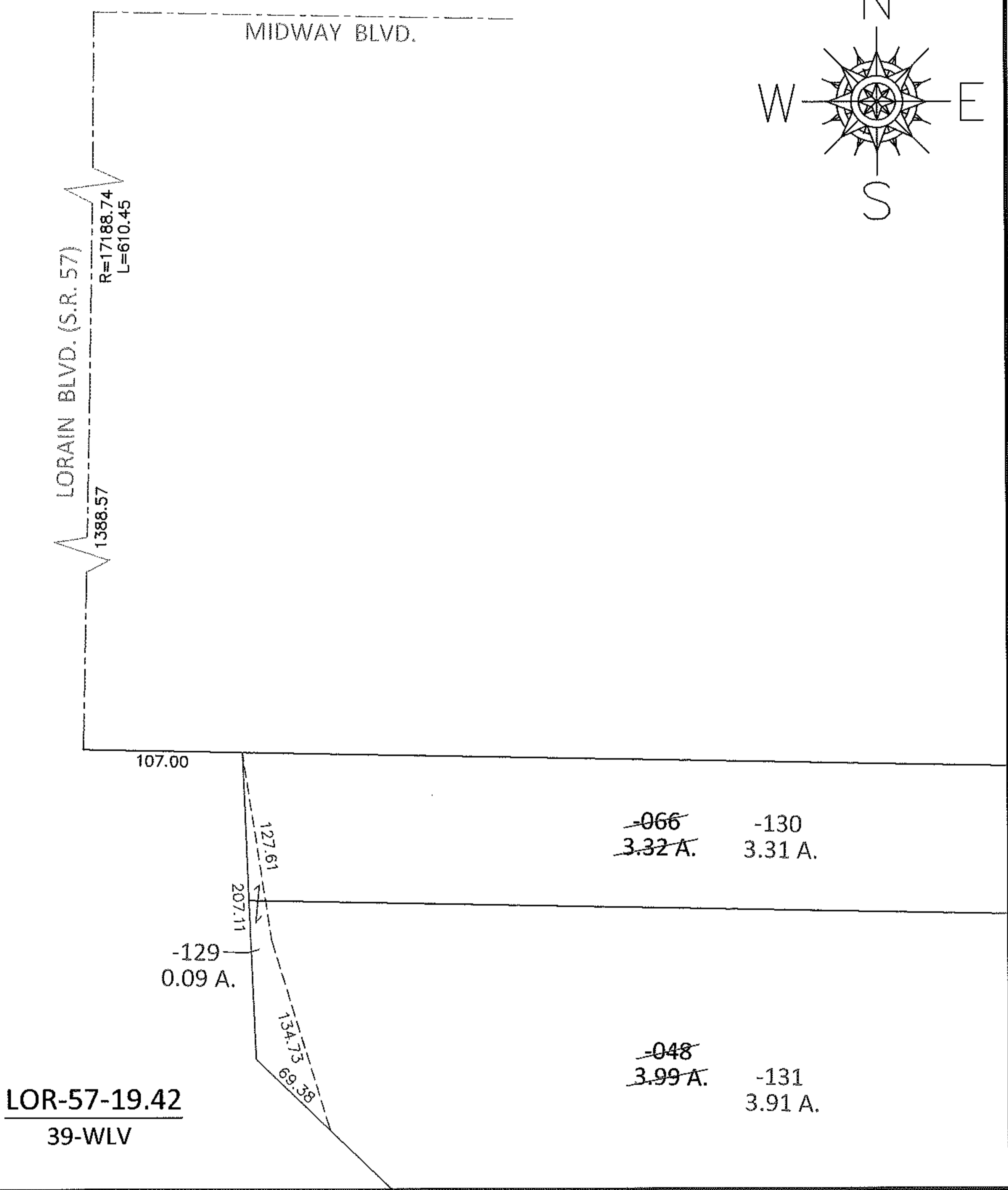
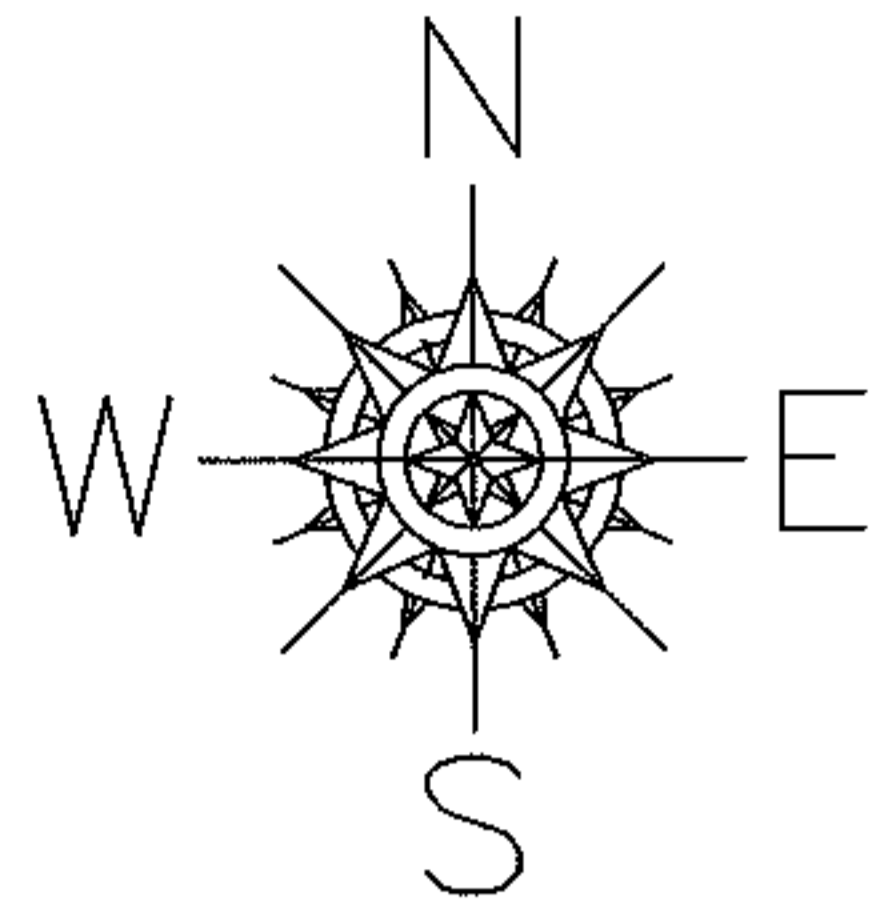


PARENT PARCEL: 06-24-030-000-048, -066

CHILD PARCEL: 06-24-030-000-129 THRU -131

STARTING POINT: INTERSECTION OF C/L OF MIDWAY BLVD. AND C/L OF S.R. 57

13-00458



SPLITS/DEEDS PROCESSED

LORAIN COUNTY TAX MAP DEPARTMENT
226 MIDDLE AVE. ELYRIA, OHIO

SURVEYED BY: TREVOR A. BIXLER
 CLOSURE: .01:10,000
 MAP PAGE(S): 6-46, 6-64
 APPROVED BY: RRM DATE: 7-25-13
 SCALE: 1"= 100 PRIOR INST.: 20110390397