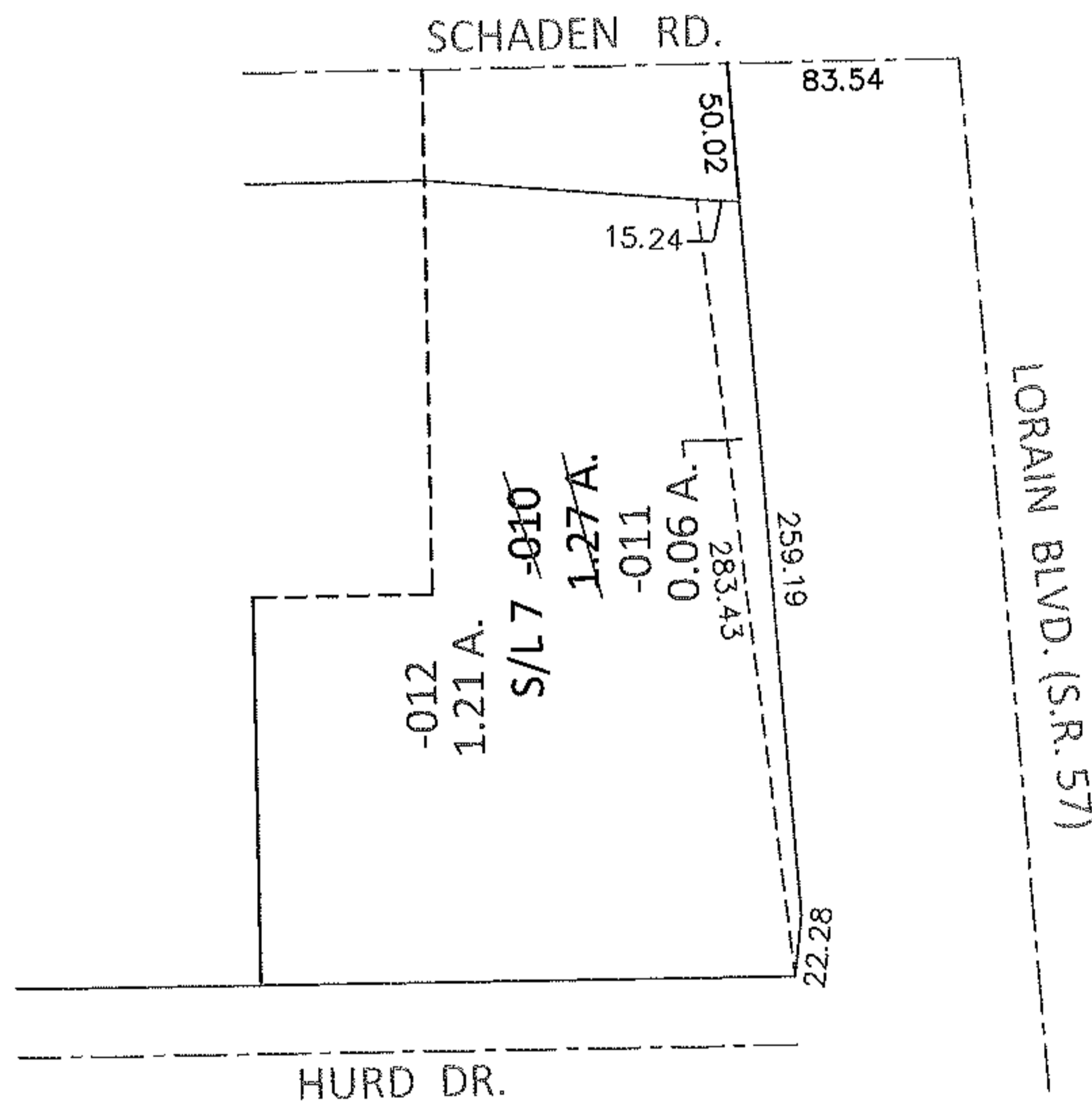
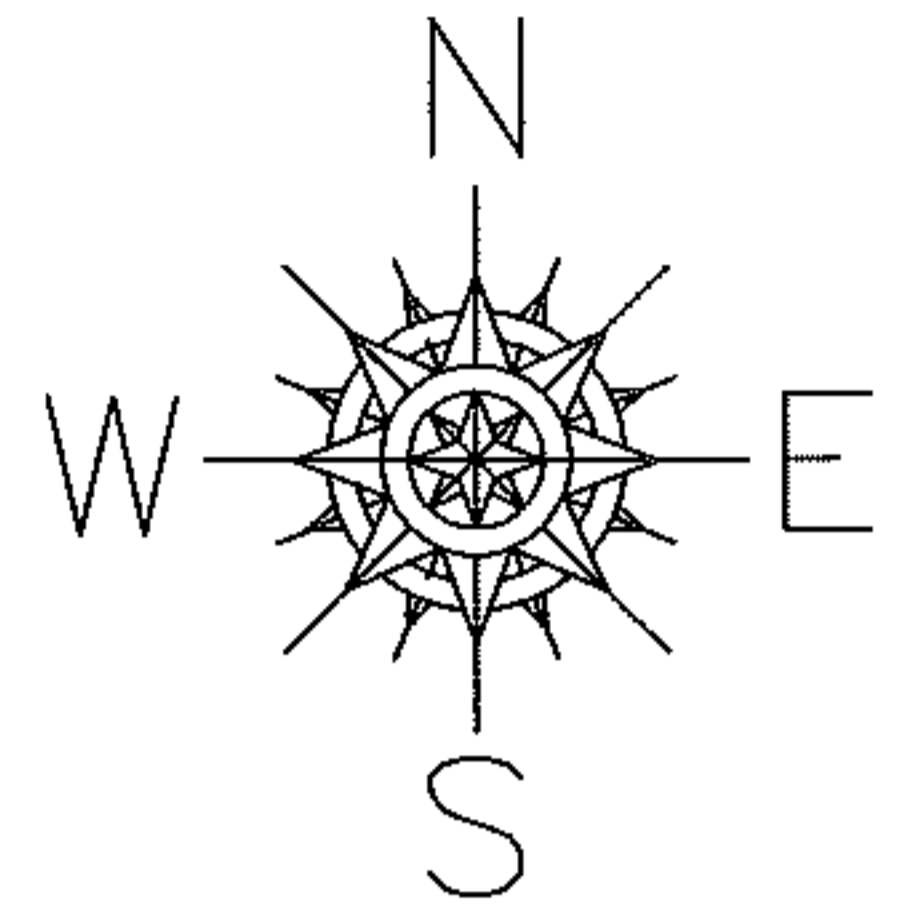


PARENT PARCEL: 06-23-013-103-010

CHILD PARCEL: 06-23-013-103-011, -012

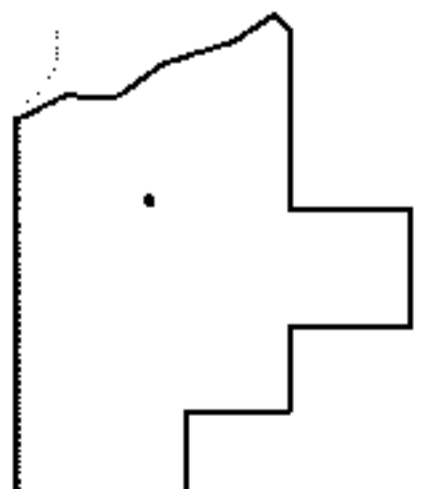
STARTING POINT: INTERSECTION OF C/L OF SCHADEN RD. AND C/L OF S.R.57

13-00456



LOR-57-19.42

36-WL



**SPLITS/DEEDS PROCESSED**

LORAIN COUNTY TAX MAP DEPARTMENT  
226 MIDDLE AVE. ELYRIA, OHIO

SURVEYED BY: TREVOR A. BIXLER

CLOSURE: .01:10,000

MAP PAGE(S): 6-27

APPROVED BY: RRM DATE: 7-25-13

SCALE: 1"= 100 PRIOR INST.: 2000684709