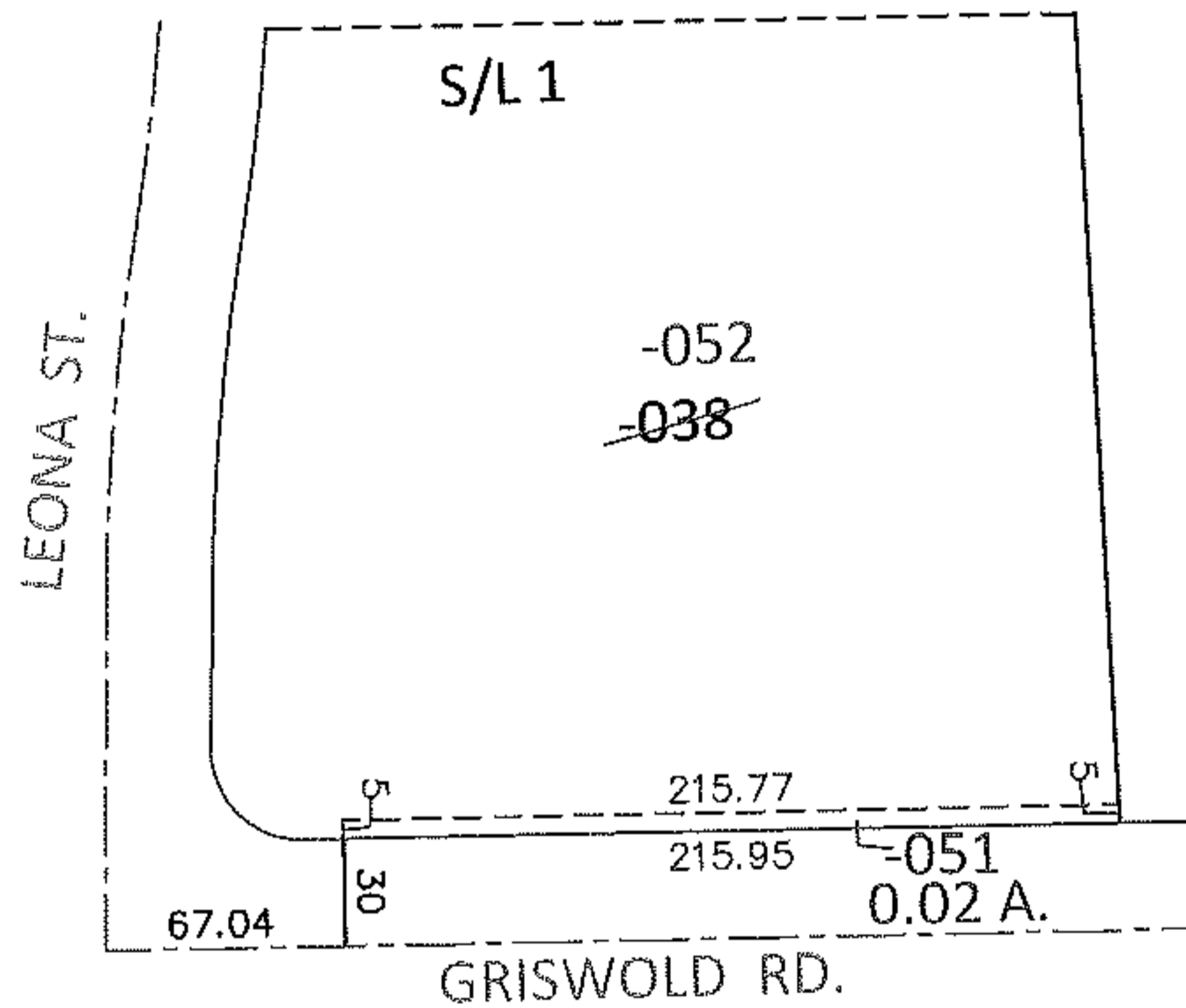
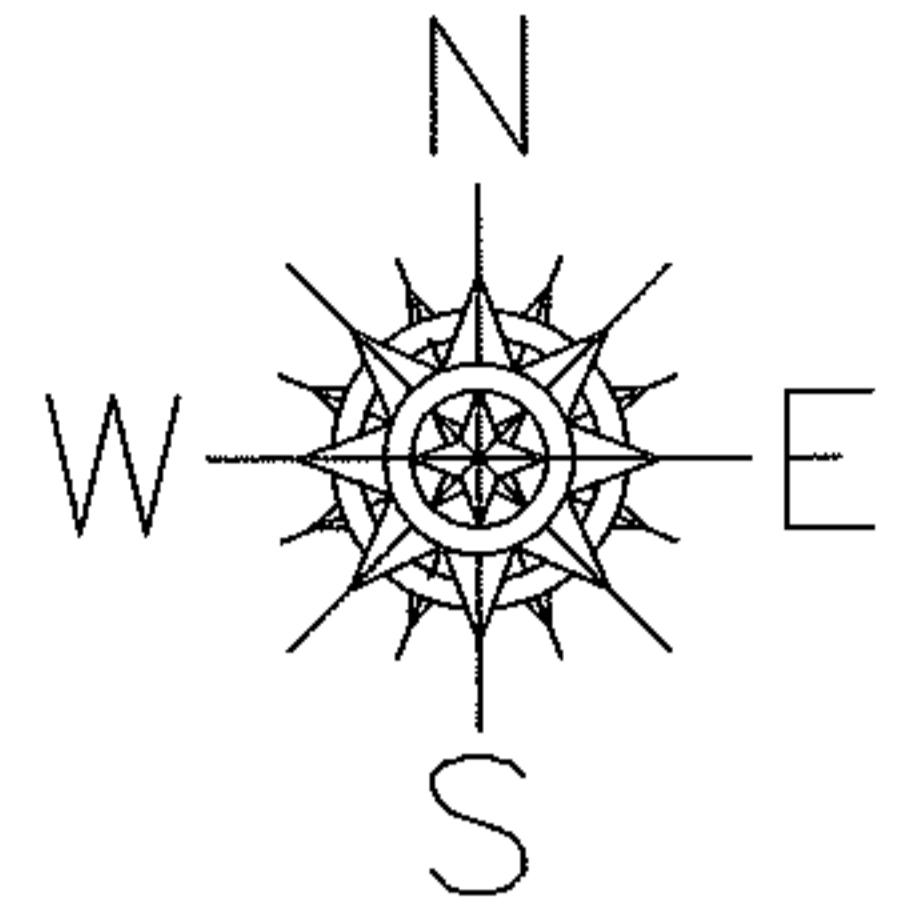


PARENT PARCEL: 06-23-016-101-038

CHILD PARCEL: 06-23-016-101-051, -052

13-00455

STARTING POINT: INTERSECTION OF C/L OF GRISWOLD RD. AND C/L OF LEONA ST.

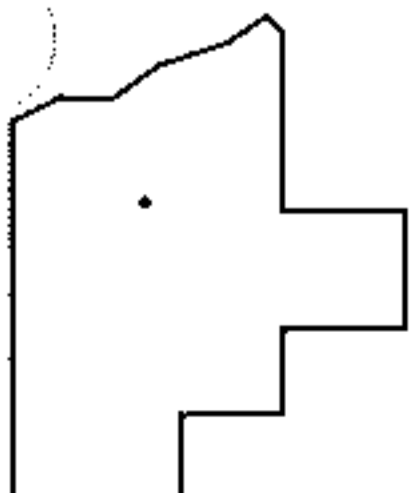


~~06-23-016-101-038~~  
~~253.08 X 225.16~~

06-23-016-101-051  
0.02 A.

06-23-016-101-052  
253.08 X 220.16 IRR

LOR-57-19.42  
29-WDV



SPLITS/DEEDS PROCESSED

LORAIN COUNTY TAX MAP DEPARTMENT  
226 MIDDLE AVE. ELYRIA, OHIO

SURVEYED BY: TREVOR A. BIXLER

CLOSURE: .00:10,000

MAP PAGE(S): 6-45

APPROVED BY: RRM DATE: 7-25-13

SCALE: 1"= 100 PRIOR INST.: DV 1272/420