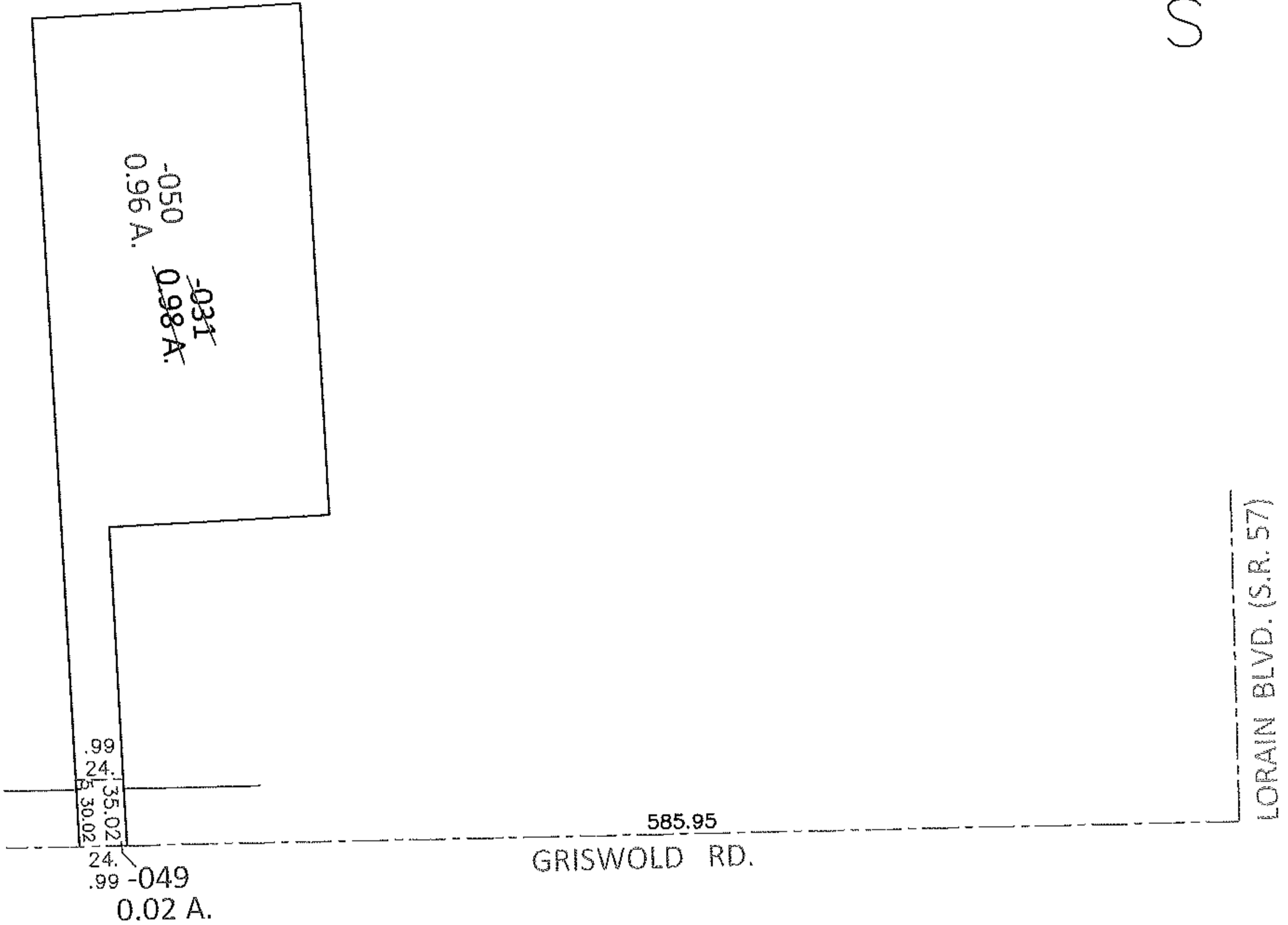
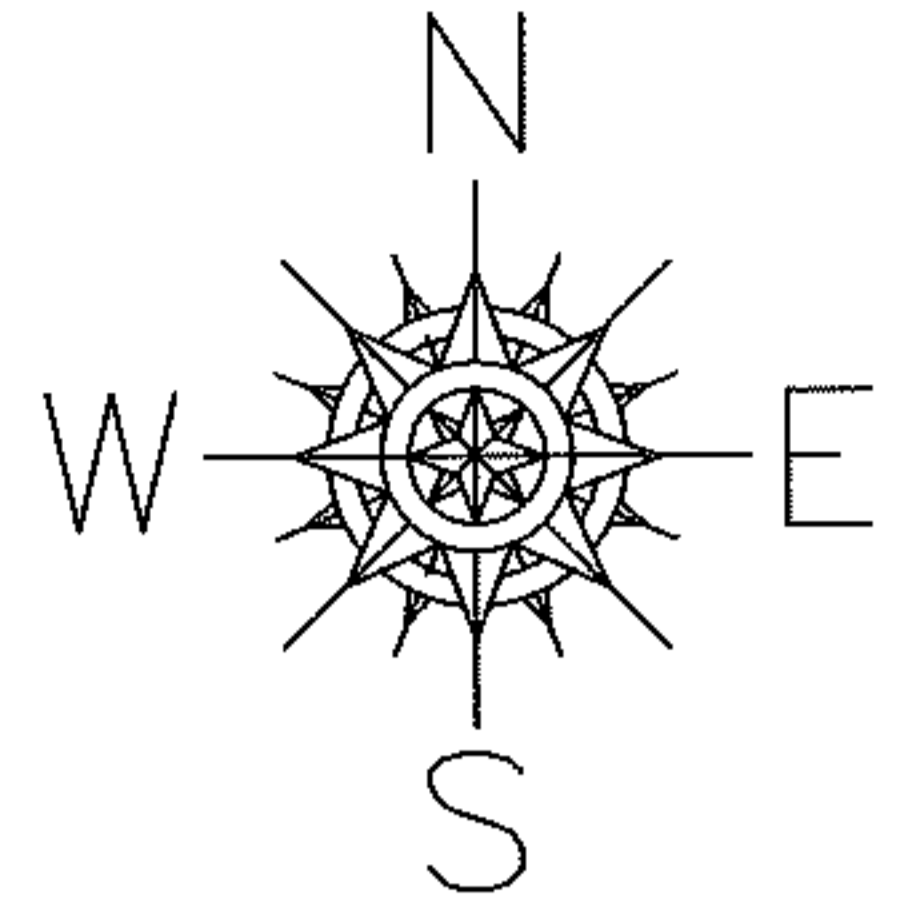


PARENT PARCEL: 06-23-016-101-031

CHILD PARCEL: 06-23-016-101-049, -050

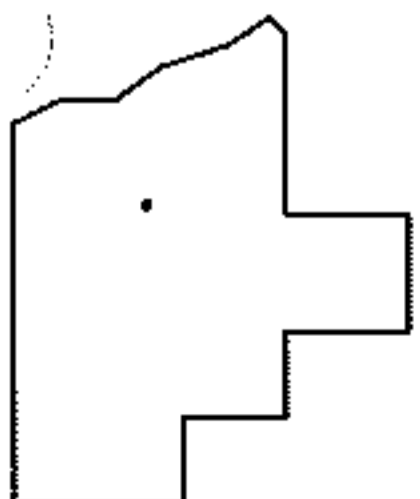
STARTING POINT: INTERSECTION OF C/L OF GRISWOLD RD. AND C/L OF S.R.57

13-00454



LOR-57-19.42

28-WDV2



SPLITS/DEEDS PROCESSED

LORAIN COUNTY TAX MAP DEPARTMENT
226 MIDDLE AVE. ELYRIA, OHIO

SURVEYED BY: TREVOR A. BIXLER

CLOSURE: .00:10,000

MAP PAGE(S): 6-45

APPROVED BY: RRM DATE: 7-25-13

SCALE: 1"= 100 PRIOR INST.: 20000719579