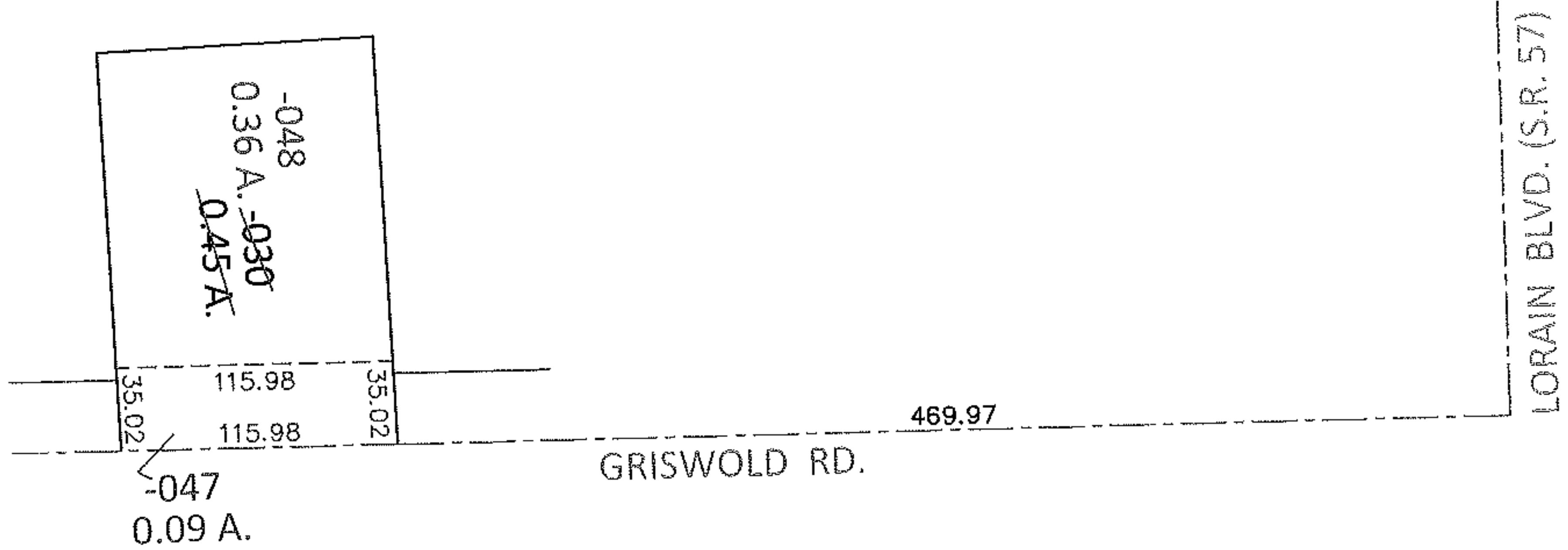
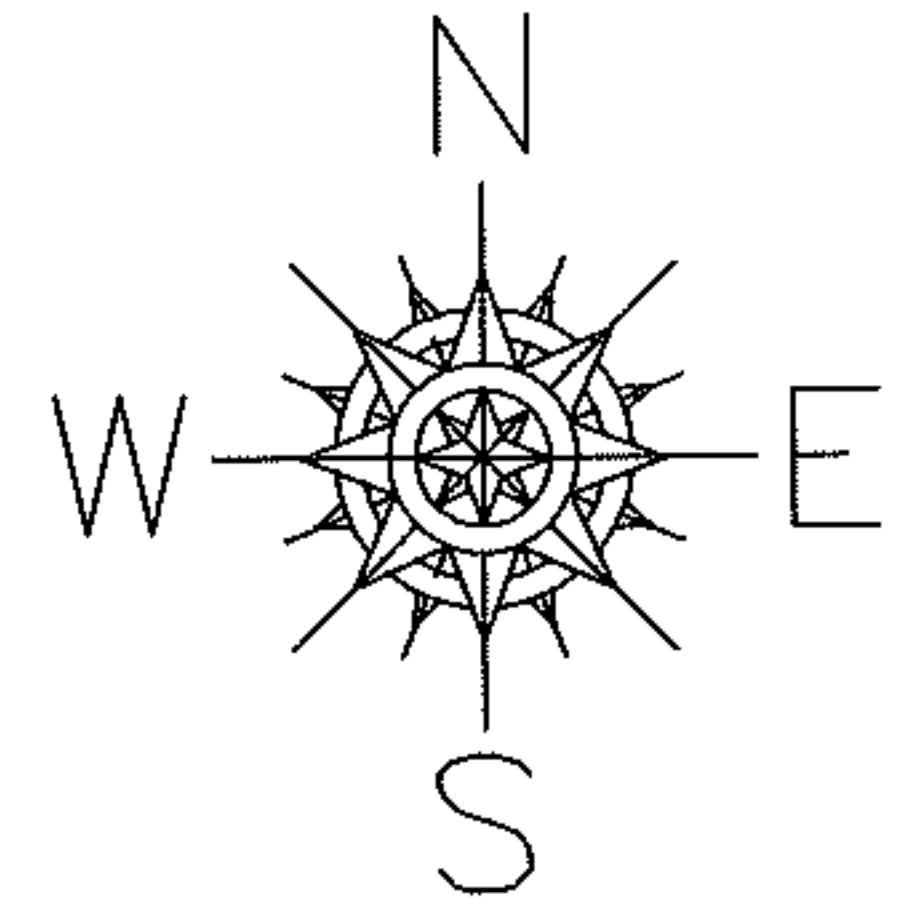


PARENT PARCEL: 06-23-016-101-030

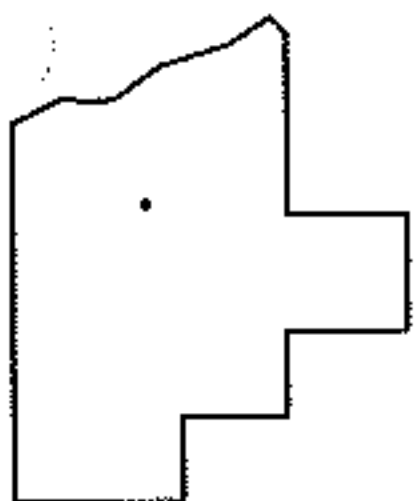
CHILD PARCEL: 06-23-016-101-047, -048

13-00453

STARTING POINT: INTERSECTION OF C/L OF GRISWOLD RD. AND C/L OF S.R.57



LOR-57-19.42
28-WDV1



SPLITS/DEEDS PROCESSED

LORAIN COUNTY TAX MAP DEPARTMENT
226 MIDDLE AVE. ELYRIA, OHIO

SURVEYED BY: TREVOR A. BIXLER

CLOSURE: .00:10,000

MAP PAGE(S): 6-45

APPROVED BY: RRM DATE: 7-25-13

SCALE: 1"=100 PRIOR INST.: 20000719579