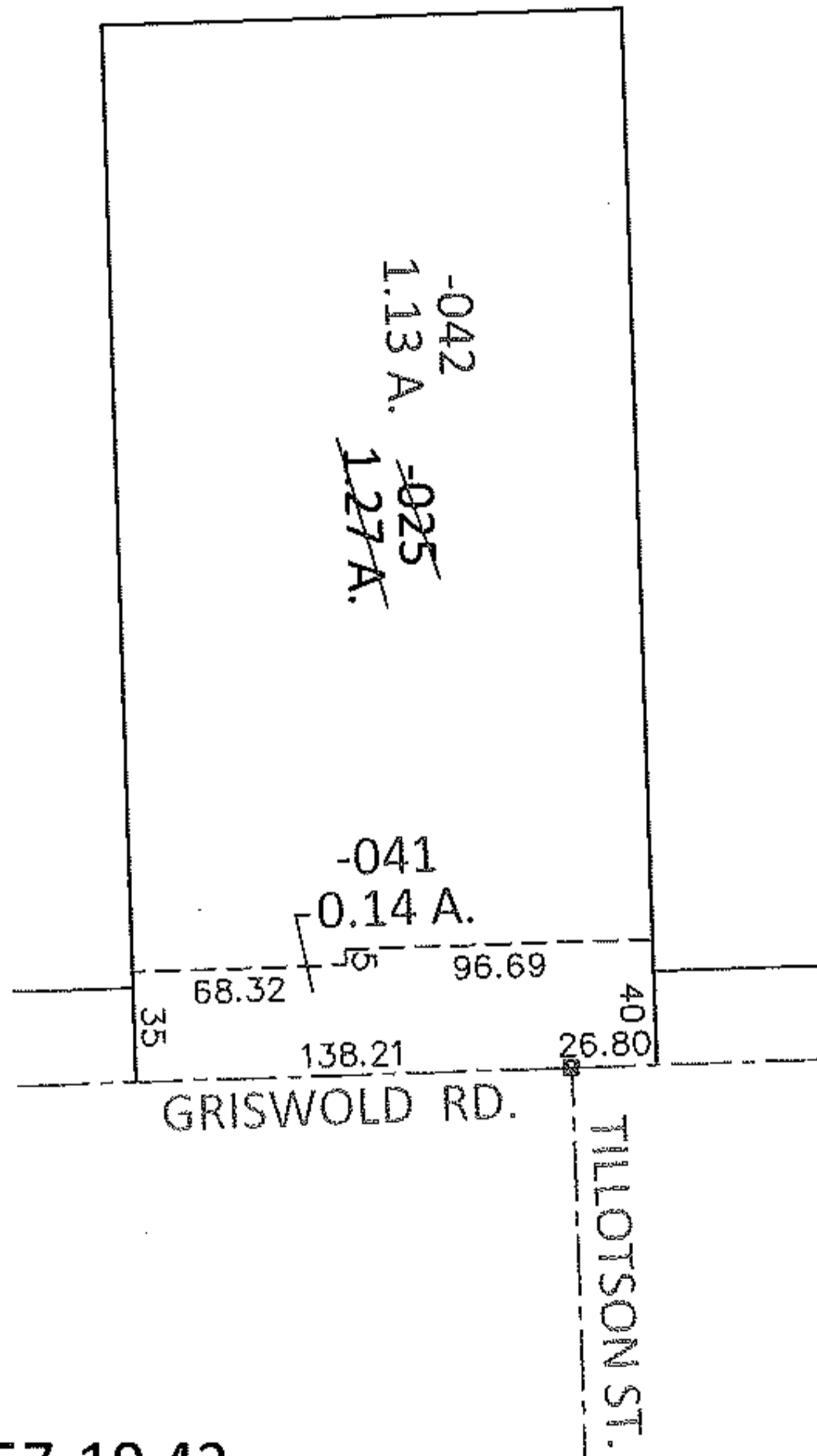
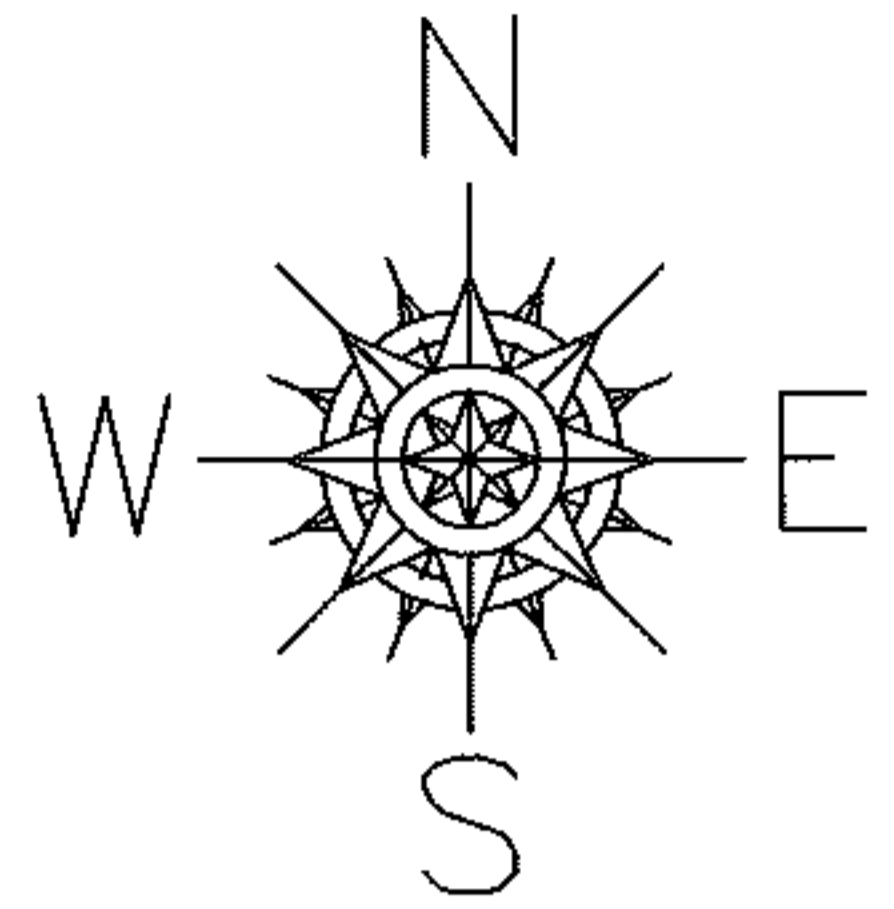


PARENT PARCEL: 06-23-016-102-025

CHILD PARCEL: 06-23-016-102-041, -042

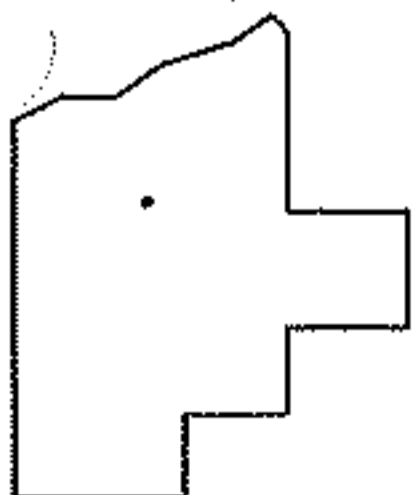
13-00451

STARTING POINT: AT A MON BOX AT THE INTERSECTION OF C/L OF GRISWOLD RD. AND C/L OF TILLOTSON ST.



LOR-57-19.42

18-WDV



SPLITS/DEEDS PROCESSED

LORAIN COUNTY TAX MAP DEPARTMENT  
226 MIDDLE AVE. ELYRIA, OHIO

SURVEYED BY: TREVOR A. BIXLER

CLOSURE: .00:10,000

MAP PAGE(S): 6-46

APPROVED BY: RRM DATE: 7-24-13

SCALE: 1"= 100 PRIOR INST.: OR 1223/762