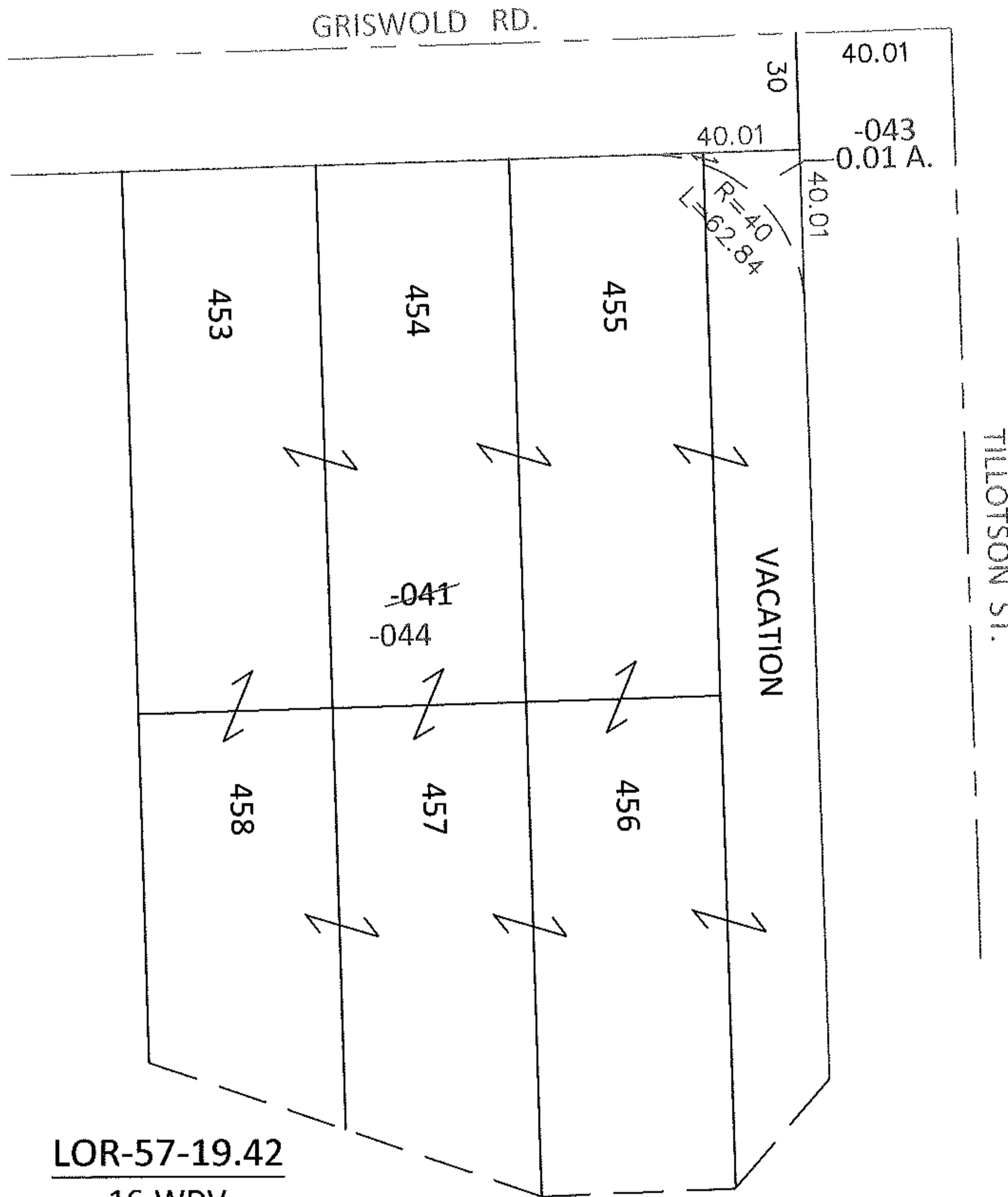
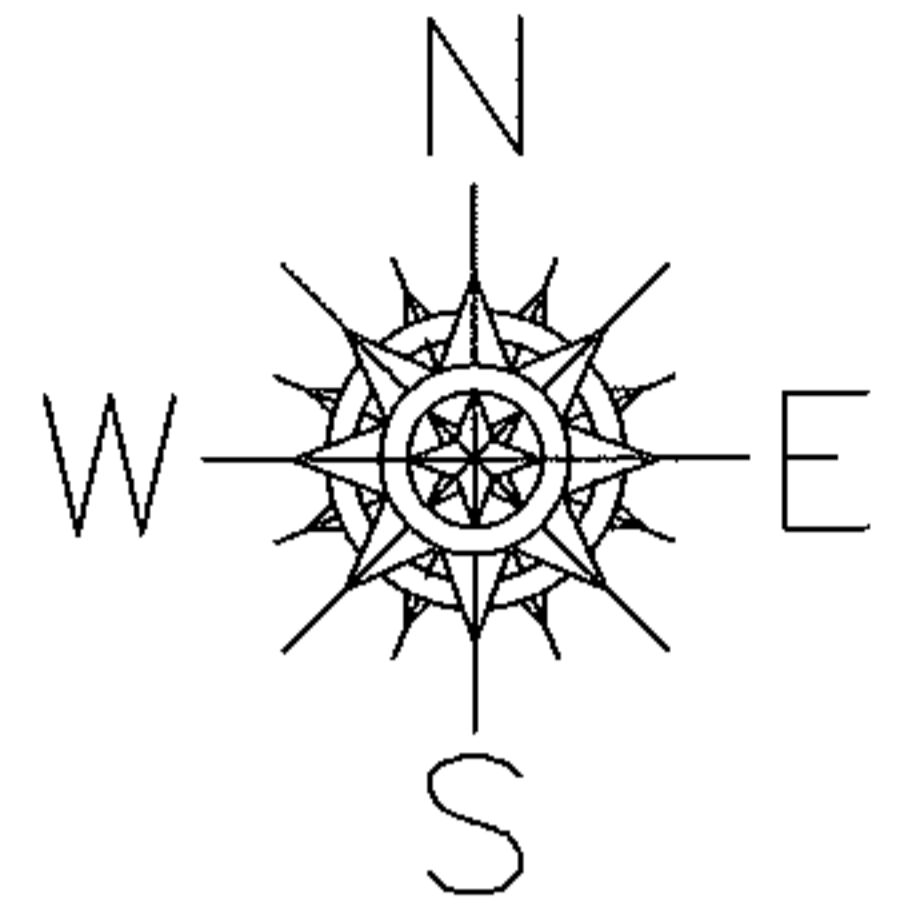


PARENT PARCEL: 06-24-031-101-041

CHILD PARCEL: 06-24-031-101-043, -044

STARTING POINT: AT A MON BOX AT THE INTERSECTION OF C/L OF GRISWOLD RD. AND C/L OF TILLOTSON ST.

13-00450



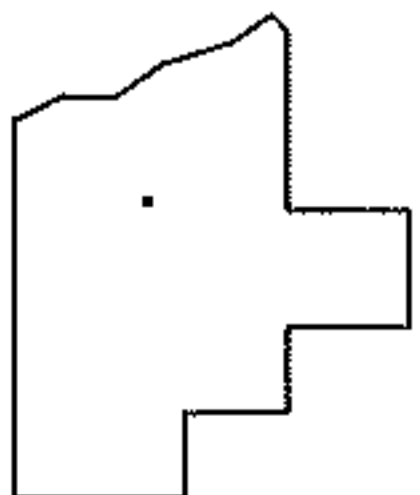
LOR-57-19.42

16-WDV

~~06-24-031-101-041~~

~~175 X 265 IRR~~

06-24-031-101-043	06-24-031-101-044
0.01 A.	134.99 X 265 IRR



SPLITS/DEEDS PROCESSED

LORAIN COUNTY TAX MAP DEPARTMENT  
226 MIDDLE AVE. ELYRIA, OHIO

SURVEYED BY: TREVOR A. BIXLER

CLOSURE: .01:10,000

MAP PAGE(S): 6-46

APPROVED BY: RRM DATE: 7-18-13

SCALE: 1"= 50' PRIOR INST.: 20000712944