

PARENT PARCEL: 06-24-031-103-037

CHILD PARCEL: 06-24-031-103-040, -041

STARTING POINT: AT A MON BOX AT THE INTERSECTION OF C/L GRISWOLD RD. AND C/L OF TILLOTSON ST.

13-00449

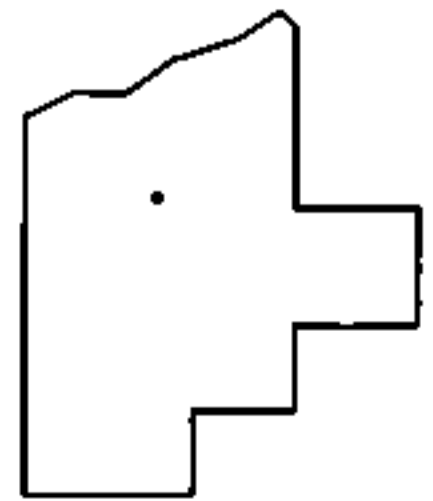
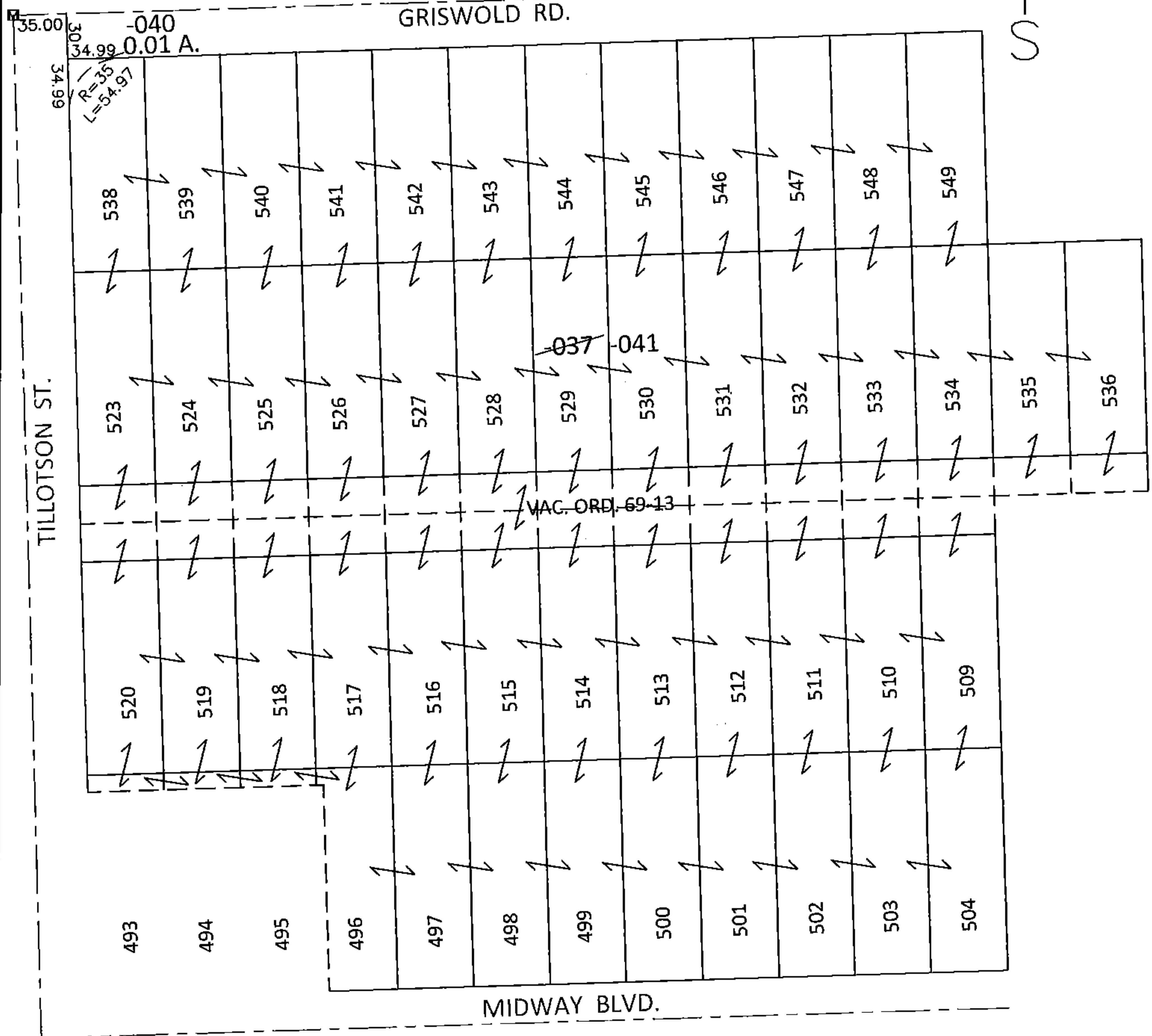
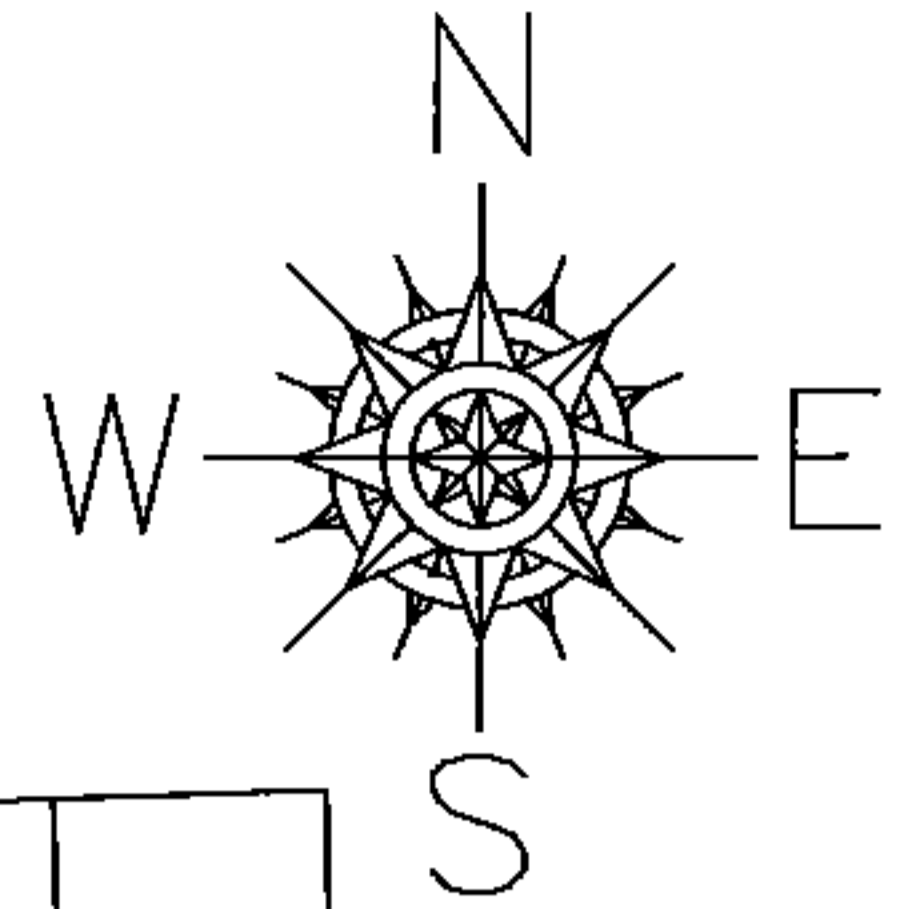
LOR-57-19.42

15-WDV

~~06-24-031-103-037~~

~~445 X 611 IRR~~

06-24-031-103-040 06-24-031-103-041
0.01 A. 410.01 X 611 IRR



SPLITS/DEEDS PROCESSED

LORAIN COUNTY TAX MAP DEPARTMENT
226 MIDDLE AVE. ELYRIA, OHIO

SURVEYED BY: TREVOR A. BIXLER

CLOSURE: .01:10,000

MAP PAGE(S): 6-46

APPROVED BY: RRM DATE: 7-18-13

SCALE: 1"= 100 PRIOR INST.: 20010720321