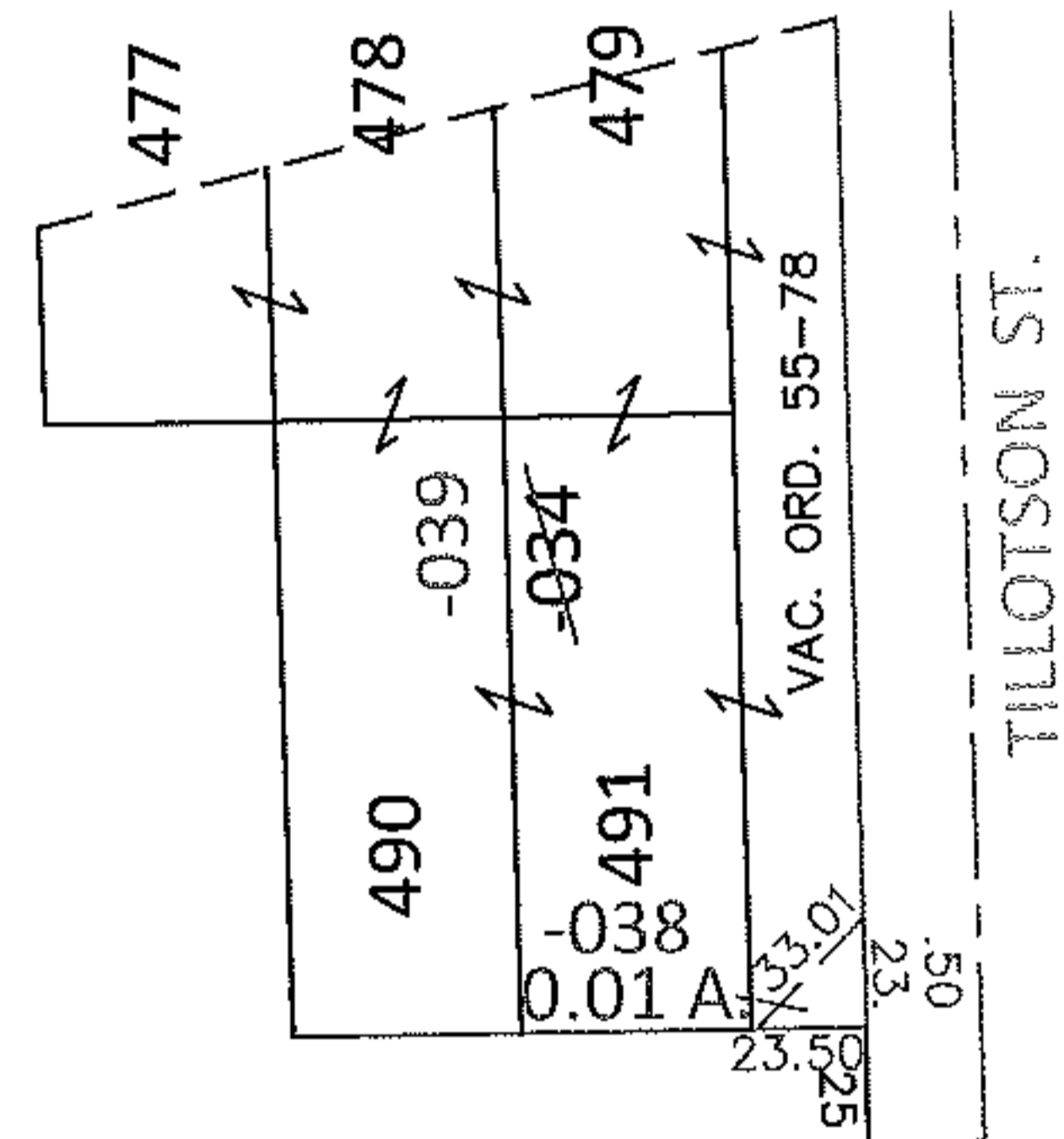
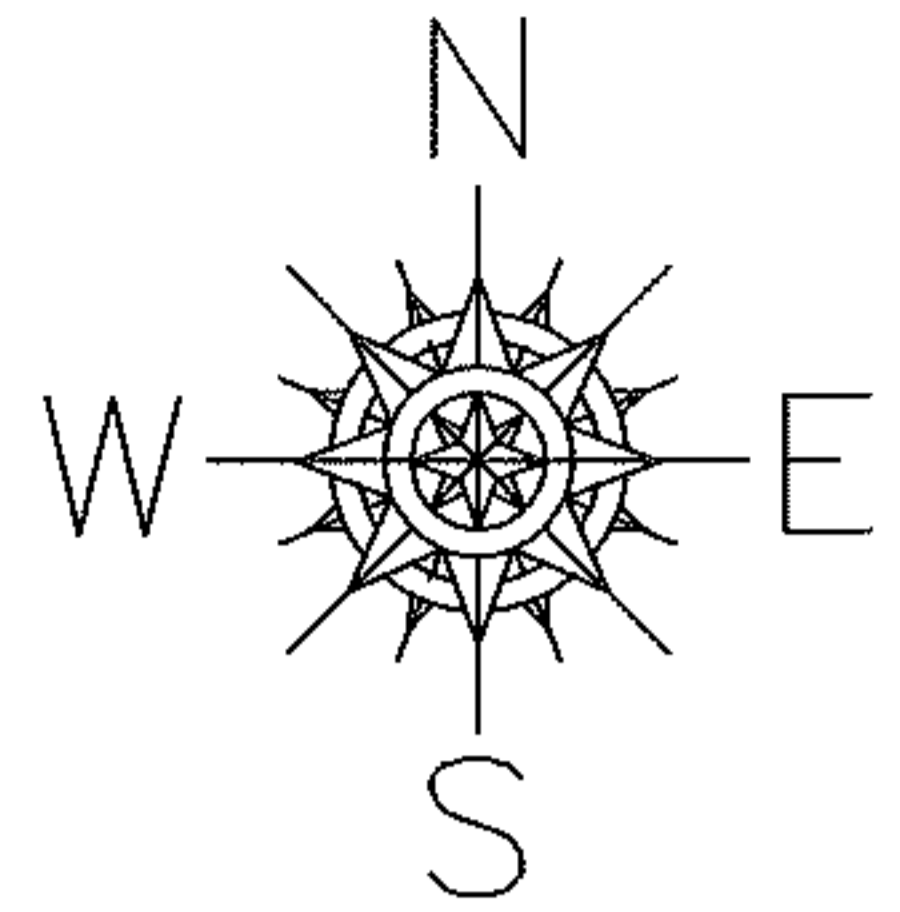


PARENT PARCEL: 06-24-031-102-034

CHILD PARCEL: 06-24-031-102-038, -039

13-00447

STARTING POINT: INTERSECTION OF C/L OF S.R. 57 AND C/L OF MIDWAY BLVD.



LORAIN BLVD. (S.R. 57)

890.29  
MIDWAY BLVD.

LOR-57-19.42

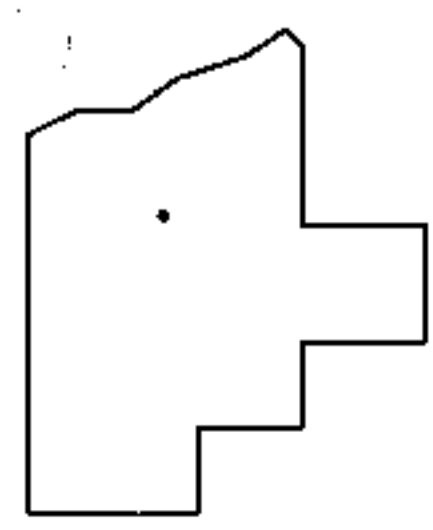
13-WDV

~~06-24-031-102-034~~

~~219.68 X 175~~

06-24-031-102-038  
0.01 A.

06-24-031-102-039  
196.18 X 175 IRR



SPLITS/DEEDS PROCESSED

LORAIN COUNTY TAX MAP DEPARTMENT  
226 MIDDLE AVE. ELYRIA, OHIO

SURVEYED BY: TREVOR A. BIXLER  
CLOSURE: .00:10,000  
MAP PAGE(S): 6-46  
APPROVED BY: RRM DATE: 7-16-13  
SCALE: 1"= 100 PRIOR INST.: DV 1328/764