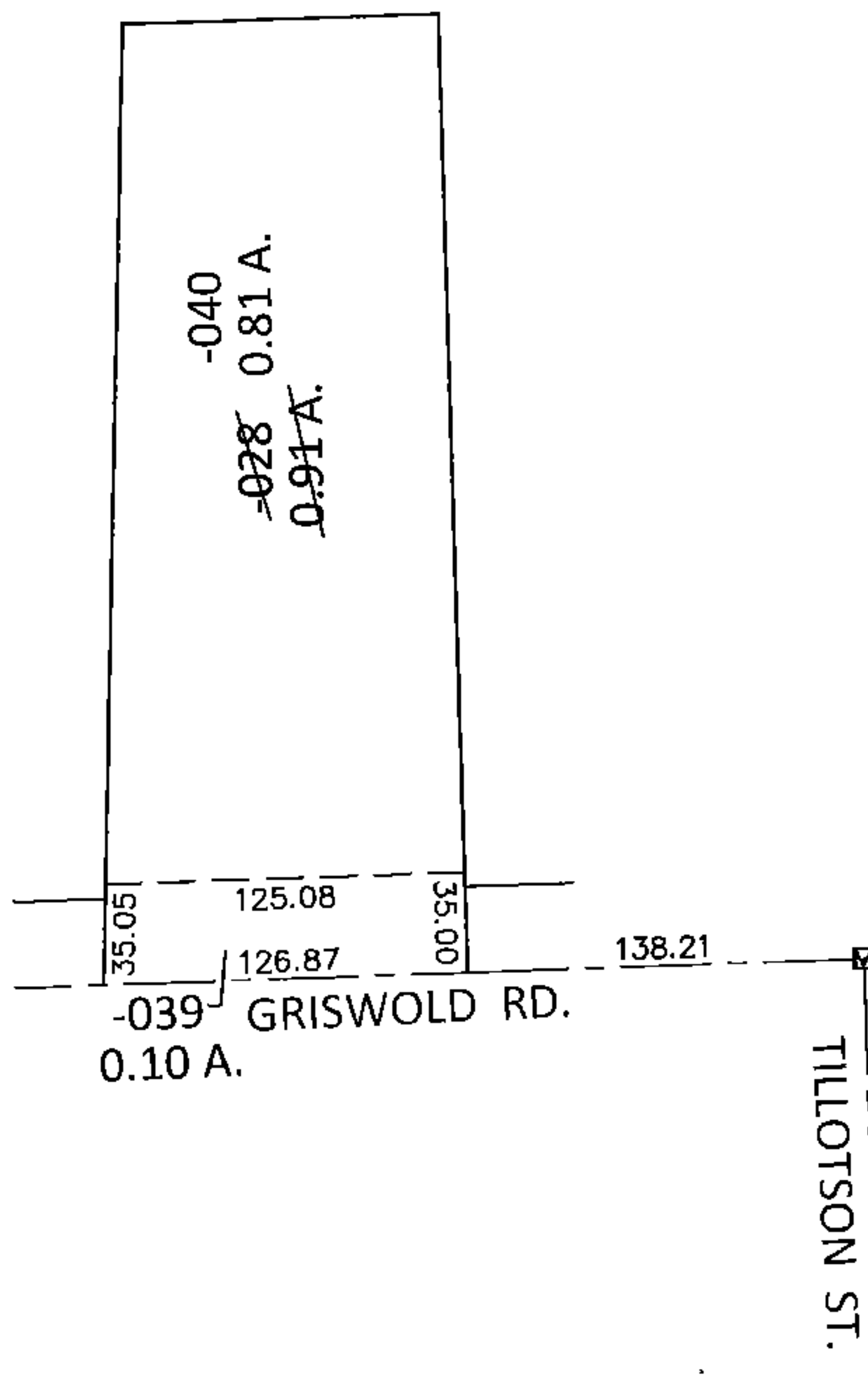
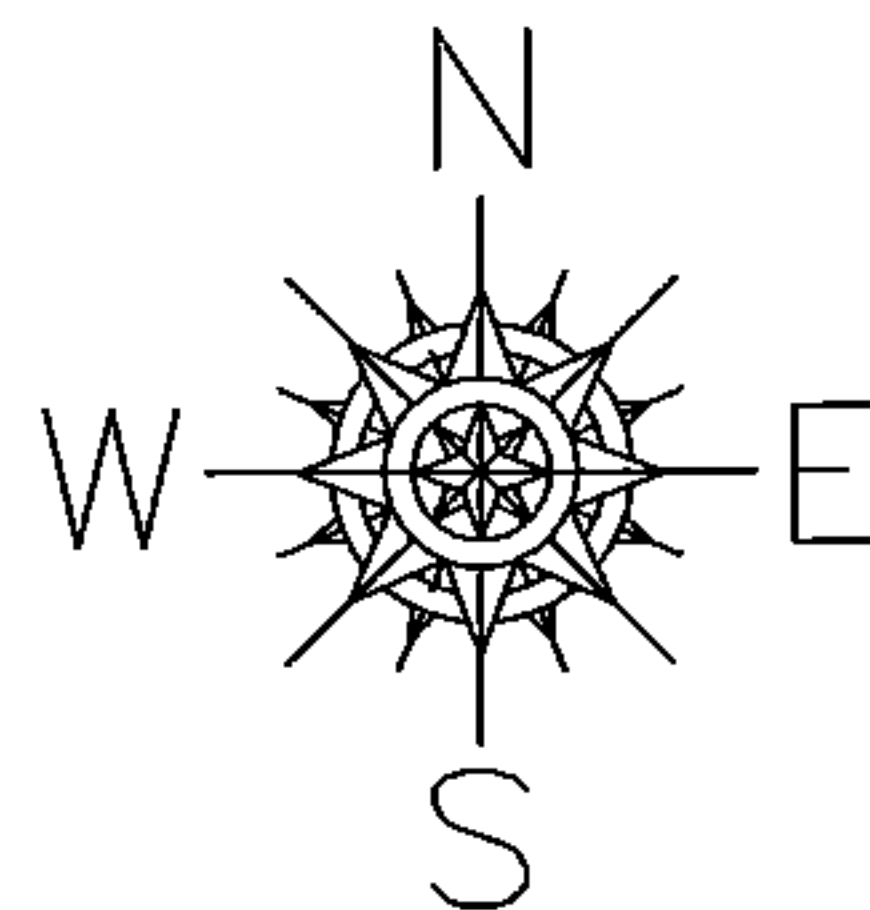


PARENT PARCEL: 06-23-016-102-028

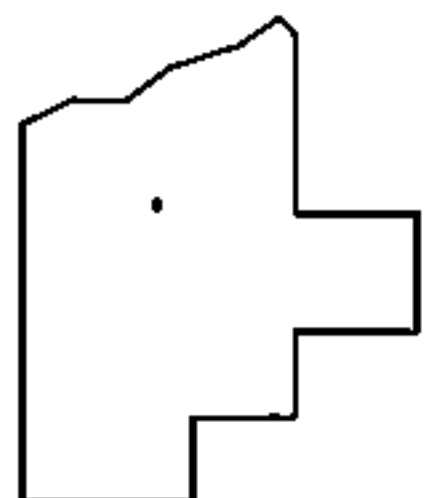
CHILD PARCEL: 06-23-016-102-039, -040

STARTING POINT: AT A MON BOX AT THE INTERSECTION OF C/L OF GRISWOLD RD. AND C/L OF TILLOTSON ST.

13-00446



LOR-57-19.42
6B-WDV



SPLITS/DEEDS PROCESSED

LORAIN COUNTY TAX MAP DEPARTMENT
226 MIDDLE AVE. ELYRIA, OHIO

SURVEYED BY: TREVOR A. BIXLER

CLOSURE: .00:10,000

MAP PAGE(S): 6-46

APPROVED BY: RRM DATE: 7-16-13

SCALE: 1"= 100 PRIOR INST.: 20070231566